

## PAR30 Barn-Door black (LH4617)

Product code: LH4617  
casing colour: black  
casing material: aluminum  
polish: mat  
warranty: 2 years

price: €16,96+VAT  
price: €20,35 including VAT  
Barn-door - PAR30



## PAR30 black black (LH3163)

Product code: LH3163  
input voltage: 230V  
casing colour: black  
casing material: aluminum  
polish: mat  
warranty: 2 years

price: €20,66+VAT  
price: €24,79 including VAT  
Barn-door - PAR30



## PAR16 black GU10 75W GU10 (LH3170)

Product code: LH3170  
input voltage: 230V  
power: 75W  
socket: GU10  
height: 185mm  
width: 114mm  
diameter: 82mm  
weight: 266g  
warranty: 2 years

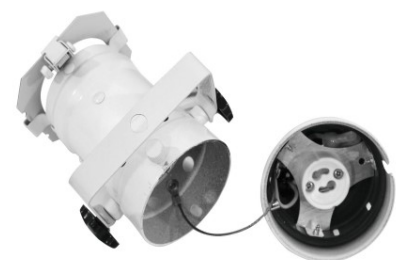
price: €13,07+VAT  
price: €15,68 including VAT



## PAR16 GU10 white 75W GU10 (LH3218)

Product code: LH3218  
input voltage: 230V  
power: 75W  
socket: GU10  
height: 185mm  
width: 114mm  
diameter: 82mm  
weight: 266g  
casing colour: white  
warranty: 2 years

price: €17,55+VAT  
price: €21,06 including VAT



## LED floodlight LED IP Flood RGB 10mm 24W (LH4314)

Product code: LH4314  
input voltage: 230V  
power: 24W  
height: 175mm  
width: 210mm  
length: 300mm  
weight: 4000g  
warranty: 2 years



## LED floodlight LED ML-30 QCL 7x8W black 110W 20° RGBW (LH3601)

Product code: LH3601  
input voltage: 230V  
power: 110W  
colour temperature (CCT): RGBW  
beam angle: 20°  
light source: [LG INNOTEK LED](#)  
height: 270mm  
width: 195mm  
depth: 180mm  
weight: 2g  
certifications: CE, RoHS  
warranty: 2 years



## LED floodlight LED PAR RGBA 27W 36° (LH2939)

Product code: LH2939  
input voltage: 230V  
power: 27W  
beam angle: 36°  
service life of LED: 50000h  
weight: 2,5g  
warranty: 2 years



## LED floodlight LED PAR-64 HCL 12x10W Floor black 125W 33° IP20 RGBW (LH4512)

Product code: LH4512  
input voltage: 230V  
power: 125W  
colour temperature (CCT): RGBW  
beam angle: 33°  
CRI: 80  
IP rating: IP20  
casing colour: black  
casing material: aluminum  
working environment: indoor use  
certifications: CE,RoHS  
energy class: A+



price: €274,77+VAT  
price: €329,72 including VAT  
Power supply: 100-240 V AC, 50/60 Hz  
Power consumption: 125 W DMX-control-  
channels: 4/10 DMX-512-connection: 3-  
pin XLR Sound-control: via built-in  
microphone LED type: 10 W LED  
RGBAWUV LED number: 12 Beam angle:  
33° Dimensions (L x W x H): 277 x 296 x  
375 mm Weight: 2.8 kg Ecodesign  
regulation: Yes Special product: Not  
designed for household room illumination  
Purpose: Show effect lighting

### LED floodlight LED PAR-64 RGBA 10mm Short black black 27W 36° RGB (LH3707)

Product code: LH3707  
input voltage: 230V  
power: 27W  
colour temperature (CCT): RGB  
beam angle: 36°  
light source: [SAMSUNG LED](#)  
height: 390mm  
width: 270mm  
length: 260mm  
weight: 2,5g  
casing colour: black  
casing material: aluminum  
polish: mat  
working environment: indoor use  
warranty: 2 years



3-pin XLR, via built-in microphone

### LED floodlight LED PAR-64 RGBAW 49x3W DMX 95W 20° IP20 (LH3598)

Product code: LH3598  
input voltage: 230V  
power: 95W  
beam angle: 20°  
IP rating: IP20  
service life of LED: 40000h  
height: 290mm  
width: 270mm  
length: 380mm  
weight: 1478g  
warranty: 2 years

49 x 3 W LEDs: 10 x red, 10 x green, 10 x  
blue, 9 x amber and 10 x white



## LED floodlight LED PAR64 20W 10° RGB (LH2843)

Product code: LH2843  
input voltage: 230V  
power: 20W  
colour temperature (CCT): RGB  
beam angle: 10°  
service life of LED: 50000h  
weight: 1,5g  
warranty: 2 years

Operable in stand-alone mode or via DMX  
DMX512 control possible via any  
commercial DMX controller (occupies 5  
channels) 3 or 5 DMX channels selectable  
for numerous applications Sound-control  
via built-in microphone Comfortable  
addressing and setting via control panel  
with LED display and four operating  
buttons Functions: Static colors, RGB  
color blend, 6 internal programs, dimmer  
and strobe settings via DMX,  
Master/Slave Equipped with 183 10 mm  
LEDs Beam angle approximately 10°  
Locking possibility at the mounting  
bracket Ready for connection via power  
cord with safety-plug Available as  
hanging spot or as floor spot Silver or  
black housing available DMX512  
connection: 3-pin XLR



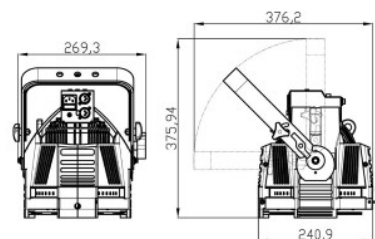
## LED floodlight LED SLS-5 QCL 5x5W Floor 24W 25° RGBW (LH3600)

Product code: LH3600  
input voltage: 230V  
power: 24W  
colour temperature (CCT): RGBW  
beam angle: 25°  
light source: [CITIZEN LED](#)  
height: 270mmmm  
width: 230mmmm  
depth: 110mmmm  
weight: 3g  
warranty: 2 years



## LED floodlight OPTI TRI PAR 18x3W 54W 25° RGB (LH3826)

Product code: LH3826  
input voltage: 230V  
power: 54W  
colour temperature (CCT): RGB  
beam angle: 25°  
service life of LED: 50000h  
weight: 4900g  
warranty: 2 years



## PAR30 silver silvery E27 (LH3164)

Product code: LH3164  
input voltage: 230V  
socket: E27  
height: 139mm  
width: 139mm  
length: 248mm  
weight: 473g  
casing colour: silvery  
casing material: aluminum  
warranty: 2 years  
  
price: €24,03+VAT  
price: €28,84 including VAT

