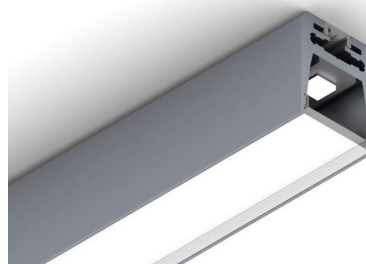


# LED HOUSE

enlightening  
spaces®



## Aluminium profile Alu Swiss 20

Product code 14184

A surface-mounted aluminum profile is a practical method for installing an LED strip effectively. With an aluminum profile, there is no risk of the LED strip shifting out of place, and the profile cover maintains uniform and cozy light distribution.

The profile is durable yet lightweight, ensuring a long lifespan and stability. Installing a surface-mounted aluminum profile is very easy.

An aluminum profile is ideal for use in many different rooms. In the kitchen, a high-power LED strip with an aluminum profile works well above the work surface. In the living room, this combination can create cozy accent lighting. High IP-rated products are perfect for bathrooms, and in retail, LED strips with aluminum profiles are ideal for highlighting products!

Trust your lighting project to the experienced team of LED House - [let's bring your vision to life!](#)

Maximum output	22W
Length	2000.0mm
Width	20.0mm
Height	24.7mm
Casing material	aluminum
Polishing	matt

