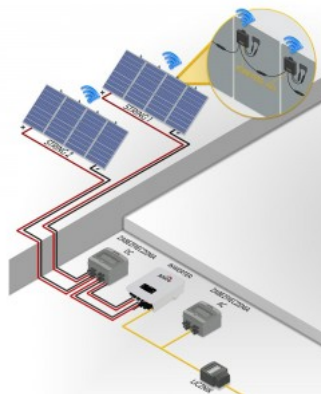


Controller GNE TEK Beebox-H PLC IP65

Product code 16484

Brand [GNE TEK](#)
 Protection class IP65
 Height 65.0mm
 Width 210.0mm
 Length 220.0mm
 Weight 880 g
 Operation temperature -20...60°C
 Certificates CE, LVD, EMC
 Warranty 10 years

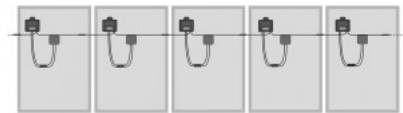
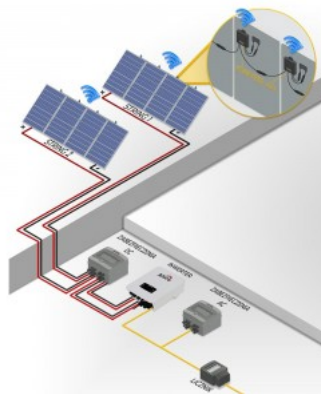
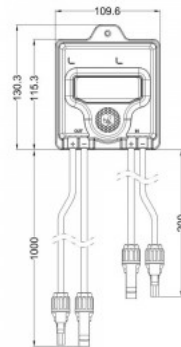
Beebox-H has an emergency shutdown function, which can be activated either over the internet network or directly from the device. The GNE rapid shutdown system consists of modules behind the solar panels (optimizers) and the control device Beetrans. The modules behind the panels communicate with the control device Beetrans PLC (Power Line Communications). By default, the optimizers are turned off. When the sun shines on the panel, Beetrans sends a signal to the modules (optimizers), and the system opens the circuit of those modules that are producing electricity. If there are malfunctions in the solar panel system, the Beetrans control device disconnects the panels from the circuit. The same happens when pressing the emergency button on the controller - the Beetrans shutdown signal is sent to the modules (optimizers), and each solar panel in the system is disconnected from the circuit. Only individual panel voltages below 60V remain in the system. Up to 60 optimizers can be connected in two strings behind one controller. Works with Honeybee optimizers.



Optimizer GNE TEK Honeybee 650-PLC 1500V 12-75V 650W IP68

Product code 16483

Brand [GNE TEK](#)
 Supply voltage 12-75V
 Output 650W
 Maximum output 650W/1m
 Rated current 15000mA
 Protection class IP68
 Height 25.0mm
 Width 110.0mm
 Length 130.0mm
 Weight 588 g
 In package 1pc
 Work environment outdoor use
 Operation temperature -40...85°C
 Certificates CE, LVD, EMC
 Warranty 10 years



Controller TIGO CCA Kit, TAP, DIN Rail PS IP68

Product code 17304

Brand [TIGO](#)
 Protection class IP68
 Casing material aluminium
 Work environment indoor use



Optimizer TIGO TS4-A-O-700W 700W

Product code 16466

Brand [TIGO](#)

Output 700W

Maximum output 700W/1m

