

## Carrier for street light ø60mm tube

**Product code 14456**

---

Installation opening diameter 60mm



**LED street light PROLUMEN ADELA MW + Lux black 230V 100W  
13400lm 60x140° IP66 1-10V 830**

**Product code 17094 1-10V dimmable**

Brand [PROLUMEN](#)  
 Supply voltage 230V  
 Power factor 0.95  
 Dimmable 1-10V  
 Output 100W  
 Luminous flux 13400lumens  
 Luminaire's efficiency lm79 134W  
 Correlated colour temperature warm white 3000K  
 Lens angle 60x140  
 Source of light [LUMILEDS](#)  
 Cri 80  
 Sdcm - macadam ellipses 6  
 Protection class IP66  
 Lifespan 100000h  
 Llmf tm21 L80B10 @25°C 100.000h  
 Height 205.0mm  
 Width 272.0mm  
 Length 508.0mm  
 Casing colour black  
 Casing material aluminum  
 Polishing matt  
 Power supply [INVENTRONICS](#)  
 Impact resistance IK08  
 Work environment outdoor use  
 Operation temperature -40 °C ... +50°C  
 Certificates CE  
 Warranty 5 years



A street light that makes moving in urban spaces safe even in the dark of night! It is perfect for driveways, streets, parking lots, and all other outdoor areas that need safe, affordable, and efficient lighting. Protection classes IP66 and IK08 ensure the fixture's durability and long life in outdoor conditions. Additionally, the light is ideal for collaboration with security cameras - see the product specifications for more details. Furthermore, the maintenance process of the light has been made exceptionally easy - allowing you to save on labor and time! This feature is ensured by the removable electric plate, which makes connecting wires during installation particularly convenient.

## LED street light PROLUMEN ADELA MW + Lux black 230V 30W 4100lm 60x140° IP66 1-10V 830

**Product code 17045 1-10V dimmable**

Brand [PROLUMEN](#)  
 Supply voltage 230V  
 Power factor 0.95  
 Dimmable 1-10V  
 Output 30W  
 Luminous flux 4100lumens  
 Luminaire's efficiency lm79 137W  
 Correlated colour temperature warm white 3000K  
 Lens angle 60x140  
 Source of light [LUMILEDS](#)  
 Cri 80  
 Sdcm - macadam ellipses 2  
 Protection class IP66  
 Lifespan 100000h  
 Llmf tm21 L80B10 @25°C 100.000h  
 Height 201.2mm  
 Width 269.8mm  
 Length 479.7mm  
 Casing colour black  
 Casing material aluminum  
 Polishing matt  
 Power supply [INVENTRONICS](#)  
 Impact resistance IK08  
 Work environment outdoor use  
 Operation temperature -40 °C ... +50°C  
 Certificates CE  
 Warranty 5 years



Smart streetlight that makes moving in urban spaces safe even in the darkness of the night! Ideal for driveways, streets, parking lots, and all other outdoor areas requiring safe and efficient lighting. The luminaire is perfectly suited for integration with security cameras (see additional details in the product specifications). Additionally, the luminaire's maintenance process has been made particularly easy - saving on labor and time! This feature is provided by a removable electrical board, making wiring connections exceptionally convenient during installation.

## LED street light PROLUMEN ADELA MW + Lux black 230V 50W 6500lm 60x140° IP66 0-10V 830

**Product code 17049 0-10V dimmable**

Brand [PROLUMEN](#)

Supply voltage 230V

Power factor 0.95

Dimmable 0-10V

Output 50W

Luminous flux 6500lumens

Luminaire's efficiency lm79 130W

Correlated colour temperature warm white 3000K

Lens angle 60x140

Source of light [LUMILEDS](#)

Cri 80

Sdcm - macadam ellipses 6

Protection class IP66

Lifespan 100000h

Llmf tm21 L80B10 @25°C 100.000h

Height 201.2mm

Width 269.8mm

Length 479.7mm

Casing colour black

Casing material aluminum

Polishing matt

Power supply [INVENTRONICS](#)

Impact resistance IK08

Work environment outdoor use

Operation temperature -40 °C ... +50°C

Certificates CE

Warranty 5 years



Smart streetlight that makes moving in urban spaces safe even in the darkness of the night! Ideal for driveways, streets, parking lots, and all other outdoor areas requiring safe and efficient lighting. The luminaire is perfectly suited for integration with security cameras (see additional details in the product specifications). Additionally, the luminaire's maintenance process has been made particularly easy - saving on labor and time! This feature is provided by a removable electrical board, making wiring connections exceptionally convenient during installation.

## LED street light PROLUMEN BEAST SF bracket black 230V 200W 30000lm 130x60° IP66 1-10V 740

**Product code 17903 1-10V dimmable**

Brand [PROLUMEN](#)  
Supply voltage 230V  
Power factor 0.95  
Dimmable 1-10V  
Output 200W  
Luminous flux 30000lumens  
Luminaire's efficiency lm79 150W  
Correlated colour temperature pure white 4000K  
Lens angle 130x60  
Source of light [LUMILEDS](#)  
Cri 70  
Sdcm - macadam ellipses 6  
Protection class IP66  
Lifespan 100000h  
Llmf tm21 L70 @25°C 100.000h  
Height 105.0mm  
Width 304.0mm  
Length 428.0mm  
Weight 3820g  
Casing colour black  
Casing material aluminum + plastic  
Polishing matt  
Power supply [INVENTRONICS](#)  
Impact resistance IK08  
Work environment outdoor use  
Operation temperature -40° - +50°C  
Certificates CE, ENEC, CB  
Warranty 5 years



A street light that makes moving in urban spaces safe even in the dark of night! It is perfect for driveways, streets, parking lots, and all other outdoor areas that need safe, affordable, and efficient lighting. Protection classes IP66 and IK08 ensure the fixture's durability and long life in outdoor conditions. Additionally, the light is ideal for collaboration with security cameras - see the product specifications for more details. Furthermore, the maintenance process of the light has been made exceptionally easy - allowing you to save on labor and time! This feature is ensured by the removable electric plate, which makes connecting wires during installation particularly convenient.

## LED street light PROLUMEN BEAST TR bracket black 230V 100W 16500lm 130x60° IP66 1-10V 740

**Product code 17862 1-10V dimmable**

Brand [PROLUMEN](#)  
Supply voltage 230V  
Power factor 0.95  
Dimmable 1-10V  
Output 100W  
Luminous flux 16500lumens  
Luminaire's efficiency lm79 165W  
Correlated colour temperature pure white 4000K  
Lens angle 130x60  
Source of light [LUMILEDS](#)  
Cri 70  
Sdcm - macadam ellipses 6  
Protection class IP66  
Lifespan 100000h  
Llmf tm21 L70 @25°C 100.000h  
Height 88.0mm  
Width 304.0mm  
Length 428.0mm  
Casing colour black  
Casing material aluminum + plastic  
Polishing matt  
Power supply [INVENTRONICS](#)  
Impact resistance IK08  
Work environment outdoor use  
Operation temperature -40° - +50°C  
Certificates CE, ENEC, CB  
Warranty 5 years



A street light that makes moving in urban spaces safe even in the dark of night! It is perfect for driveways, streets, parking lots, and all other outdoor areas that need safe, affordable, and efficient lighting. Protection classes IP66 and IK08 ensure the fixture's durability and long life in outdoor conditions. Additionally, the light is ideal for collaboration with security cameras - see the product specifications for more details. Furthermore, the maintenance process of the light has been made exceptionally easy - allowing you to save on labor and time! This feature is ensured by the removable electric plate, which makes connecting wires during installation particularly convenient.

## LED street light PROLUMEN BEAST TR bracket black 230V 240W 40947lm 100x140° IP66 0-10V 740

**Product code 17802 0-10V dimmable**

Brand [PROLUMEN](#)  
Supply voltage 230V  
Power factor 0.95  
Dimmable 0-10V  
Output 240W  
Luminous flux 40947lumens  
Luminaire's efficiency lm79 171W  
Correlated colour temperature pure white 4000K  
Lens angle 100x140  
Source of light [LUMILEDS](#)  
Cri 70  
Sdcm - macadam ellipses 6  
Protection class IP66  
Lifespan 100000h  
Height 184.2mm  
Width 304.0mm  
Length 595.4mm  
Weight 7030g  
Casing colour black  
Casing material aluminum  
Polishing matt  
Power supply [INVENTRONICS](#)  
Impact resistance IK08  
Work environment outdoor use  
Operation temperature -40° - +50°C  
Certificates CE, ENEC, CB  
Warranty 5 years



A street light that makes moving in urban spaces safe even in the dark of night! It is perfect for driveways, streets, parking lots, and all other outdoor areas that need safe, affordable, and efficient lighting. Protection classes IP66 and IK08 ensure the fixture's durability and long life in outdoor conditions. Additionally, the light is ideal for collaboration with security cameras - see the product specifications for more details. Furthermore, the maintenance process of the light has been made exceptionally easy - allowing you to save on labor and time! This feature is ensured by the removable electric plate, which makes connecting wires during installation particularly convenient.

## LED street light PROLUMEN BEAST TR bracket black 230V 400W 66419lm 100x140° IP66 1-10V 750

**Product code 17803 1-10V dimmable**

Brand [PROLUMEN](#)  
 Supply voltage 230V  
 Power factor 0.95  
 Dimmable 1-10V  
 Output 400W  
 Luminous flux 66419lumens  
 Luminaire's efficiency lm79 166W  
 Correlated colour temperature pure white 5000K  
 Lens angle 100x140  
 Source of light [LUMILEDS](#)  
 Cri 70  
 Sdcm - macadam ellipses 6  
 Protection class IP66  
 Lifespan 100000h  
 Height 199.6mm  
 Width 339.6mm  
 Length 767.5mm  
 Weight 1099g  
 Casing colour black  
 Casing material aluminum  
 Polishing matt  
 Power supply [INVENTRONICS](#)  
 Impact resistance IK08  
 Work environment outdoor use  
 Operation temperature -40° - +50°C  
 Certificates CE, ENEC, CB  
 Warranty 5 years



A street light that makes moving in urban spaces safe even in the dark of night! It is perfect for driveways, streets, parking lots, and all other outdoor areas that need safe, affordable, and efficient lighting. Protection classes IP66 and IK08 ensure the fixture's durability and long life in outdoor conditions. Additionally, the light is ideal for collaboration with security cameras - see the product specifications for more details. Furthermore, the maintenance process of the light has been made exceptionally easy - allowing you to save on labor and time! This feature is ensured by the removable electric plate, which makes connecting wires during installation particularly convenient.



## LED street light PROLUMEN BEAST U bracket black 230V 400W 66419lm 100x140° IP66 1-10V 750

**Product code 17804 1-10V dimmable**

Brand [PROLUMEN](#)  
Supply voltage 230V  
Power factor 0.95  
Dimmable 1-10V  
Output 400W  
Luminous flux 66419lumens  
Luminaire's efficiency lm79 166W  
Correlated colour temperature pure white 5000K  
Lens angle 100x140  
Source of light [LUMILEDS](#)  
Cri 70  
Sdcm - macadam ellipses 6  
Protection class IP66  
Lifespan 100000h  
Height 199.6mm  
Width 339.6mm  
Length 767.5mm  
Weight 1099g  
Casing colour black  
Casing material aluminum  
Polishing matt  
Power supply [INVENTRONICS](#)  
Impact resistance IK08  
Work environment outdoor use  
Operation temperature -40° - +50°C  
Certificates CE, ENEC, CB  
Warranty 5 years



A street light that makes moving in urban spaces safe even in the dark of night! It is perfect for driveways, streets, parking lots, and all other outdoor areas that need safe, affordable, and efficient lighting. Protection classes IP66 and IK08 ensure the fixture's durability and long life in outdoor conditions. Additionally, the light is ideal for collaboration with security cameras - see the product specifications for more details. Furthermore, the maintenance process of the light has been made exceptionally easy - allowing you to save on labor and time! This feature is ensured by the removable electric plate, which makes connecting wires during installation particularly convenient.

## LED street light PROLUMEN BEAST YK bracket black 230V 200W 30000lm 130x60° IP66 1-10V 740

**Product code 17861 1-10V dimmable**

Brand [PROLUMEN](#)  
Supply voltage 230V  
Power factor 0.95  
Dimmable 1-10V  
Output 200W  
Luminous flux 30000lumens  
Luminaire's efficiency lm79 150W  
Correlated colour temperature pure white 4000K  
Lens angle 130x60  
Source of light [LUMILEDS](#)  
Cri 70  
Sdcm - macadam ellipses 6  
Protection class IP66  
Lifespan 100000h  
Llmf tm21 L70 @25°C 100.000h  
Height 105.0mm  
Width 304.0mm  
Length 428.0mm  
Weight 3820g  
Casing colour black  
Casing material aluminum + plastic  
Polishing matt  
Power supply [INVENTRONICS](#)  
Impact resistance IK08  
Work environment outdoor use  
Operation temperature -40° - +50°C  
Certificates CE, ENEC, CB  
Warranty 5 years



A street light that makes moving in urban spaces safe even in the dark of night! It is perfect for driveways, streets, parking lots, and all other outdoor areas that need safe, affordable, and efficient lighting. Protection classes IP66 and IK08 ensure the fixture's durability and long life in outdoor conditions. Additionally, the light is ideal for collaboration with security cameras - see the product specifications for more details. Furthermore, the maintenance process of the light has been made exceptionally easy - allowing you to save on labor and time! This feature is ensured by the removable electric plate, which makes connecting wires during installation particularly convenient.

## LED street light PROLUMEN BEAST YK bracket black 230V 300W 48900lm 130x60° IP66 1-10V 740

**Product code 17863 1-10V dimmable**

Brand [PROLUMEN](#)  
Supply voltage 230V  
Power factor 0.95  
Dimmable 1-10V  
Output 300W  
Luminous flux 48900lumens  
Luminaire's efficiency lm79 163W  
Correlated colour temperature pure white 4000K  
Lens angle 130x60  
Source of light [LUMILEDS](#)  
Cri 70  
Sdcm - macadam ellipses 6  
Protection class IP66  
Lifespan 100000h  
Llmf tm21 L70 @25°C 100.000h  
Height 88.0mm  
Width 304.0mm  
Length 428.0mm  
Casing colour black  
Casing material aluminum + plastic  
Polishing matt  
Power supply [INVENTRONICS](#)  
Impact resistance IK08  
Work environment outdoor use  
Operation temperature -40° - +50°C  
Certificates CE, ENEC, CB  
Warranty 5 years



A street light that makes moving in urban spaces safe even in the dark of night! It is perfect for driveways, streets, parking lots, and all other outdoor areas that need safe, affordable, and efficient lighting. Protection classes IP66 and IK08 ensure the fixture's durability and long life in outdoor conditions. Additionally, the light is ideal for collaboration with security cameras - see the product specifications for more details. Furthermore, the maintenance process of the light has been made exceptionally easy - allowing you to save on labor and time! This feature is ensured by the removable electric plate, which makes connecting wires during installation particularly convenient.

## LED street light PROLUMEN Hermoso black 230V 30W 4000lm 90° IP66 730

**Product code 17590**

Brand [PROLUMEN](#)  
 Supply voltage 230V  
 Power factor 0.95  
 Output 30W  
 Luminous flux 4000lumens  
 Luminaire's efficiency lm79 133W  
 Correlated colour temperature warm  
 white 3000K  
 Lens angle 90  
 Source of light [PHILIPS LED](#)  
 Cri 70  
 Sdcm - macadam ellipses 6  
 Protection class IP66  
 Lifespan 50000h  
 Llmf tm21 L90B10 @25°C 50.000h  
 Height 539.0mm  
 Diameter 422.0mm  
 Weight 27500g  
 In package 1pc  
 Casing colour black  
 Casing material aluminum  
 Polishing matt  
 Power supply [SOSEN](#)  
 Impact resistance IK08  
 Work environment outdoor use  
 Operation temperature -40 °C ...  
 +50°C  
 Certificates CE  
 Warranty 5 years



Outdoor light with an elegant style.  
 Available options: 30W, 40W, 60W,  
 90W. This light is suitable for poles  
 with a diameter of 60-80mm. It is  
 perfect for driveways, streets, parking  
 lots, and all other outdoor areas that  
 need safe, affordable, and efficient  
 lighting.

## LED street light PROLUMEN Hermoso black 230V 40W 6000lm 90° IP66 830

**Product code 17044**

Brand [PROLUMEN](#)  
 Supply voltage 230V  
 Power factor 0.95  
 Output 40W  
 Luminous flux 6000lumens  
 Luminaire's efficiency lm79 150W  
 Correlated colour temperature warm  
 white 3000K  
 Lens angle 90  
 Source of light [LUMILEDS](#)  
 Cri 80  
 Sdcm - macadam ellipses 6  
 Protection class IP66  
 Lifespan 50000h  
 Llmf tm21 L90B10 @25°C 50.000h  
 Height 539.0mm  
 Diameter 422.0mm  
 Weight 5700g  
 In package 1pc  
 Casing colour black  
 Casing material aluminum  
 Polishing matt  
 Power supply [MEAN WELL](#)  
 Impact resistance IK08  
 Work environment outdoor use  
 Operation temperature -40 °C ...  
 +50°C  
 Certificates CE  
 Warranty 5 years



Outdoor light with an elegant style.  
 Available options: 30W, 40W, 60W,  
 90W. This light is suitable for poles  
 with a diameter of 60-80mm. It is  
 perfect for driveways, streets, parking  
 lots, and all other outdoor areas that  
 need safe, affordable, and efficient  
 lighting.

## LED street light PROLUMEN Hermoso black 230V 60W 8400lm 90° IP66 830

**Product code 17844**

Brand [PROLUMEN](#)  
 Supply voltage 230V  
 Power factor 0.95  
 Output 60W  
 Luminous flux 8400lumens  
 Luminaire's efficiency lm79 140W  
 Correlated colour temperature warm white 3000K  
 Lens angle 90  
 Source of light [PHILIPS LED](#)  
 Cri 80  
 Sdcm - macadam ellipses 6  
 Protection class IP66  
 Lifespan 50000h  
 Llmf tm21 L90B10 @25°C 50.000h  
 Height 539.0mm  
 Diameter 422.0mm  
 Weight 5700g  
 In package 1pc  
 Casing colour black  
 Casing material aluminum  
 Polishing matt  
 Power supply [MEAN WELL](#)  
 Impact resistance IK08  
 Work environment outdoor use  
 Operation temperature -40 °C ...  
 +50°C  
 Certificates CE  
 Warranty 5 years



Outdoor light with an elegant style.  
 Available options: 30W, 40W, 60W,  
 90W. This light is suitable for poles  
 with a diameter of 60-80mm. It is  
 perfect for driveways, streets, parking  
 lots, and all other outdoor areas that  
 need safe, affordable, and efficient  
 lighting.

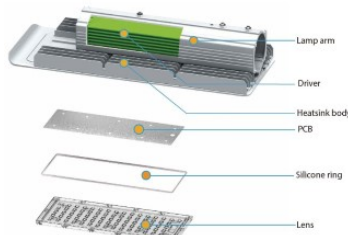
# LED street light PROLUMEN Slim silvery 230V 150W 18000lm 70x140° IP66 840

**Product code 14326**

Brand [PROLUMEN](#)  
 Supply voltage 230V  
 Output 150W  
 Luminous flux 18000lumens  
 Luminaire's efficiency lm79 120W  
 Correlated colour temperature pure white 4000K  
 Lens angle 70x140  
 Source of light [LUMILEDS](#)  
 Cri 80  
 Protection class IP66  
 Lifespan 50000h  
 Installation opening diameter 60mm  
 Weight 2100g  
 In package 1pc  
 Casing colour silvery  
 Casing material aluminum  
 Polishing matt  
 Power supply [MEAN WELL](#)  
 Work environment outdoor use  
 Operation temperature -40° -+50°C  
 Certificates CE, RoHS, ENEC



The LED street light Slim is a product of the PROLUMEN brand by the Estonian company LED House OÜ. The product uses LUMILEDS LUXEON 3030 2D LEDs and a Mean Well ELG series power supply. The housing is made of aluminum, powder-coated, and corrosion-resistant. The light is directed by a high-quality lens made of PMMA material. The recommended installation height for a 60W light is 4-6 meters. The light is powered by a Mean Well power supply, which is one of the most sold and widely used power supply manufacturers in the world. The input voltage of the power supplies ranges from 180 to 295V. A PFC function (power factor correction) is built-in. The working efficiency is up to 91.5%. Protection elements are built-in to safeguard against overheating, overvoltage, and overload. The power supplies have an IP67 protection class and are suitable for both indoor and outdoor use. Mean Well offers a 5-year manufacturer's warranty on the power supplies. More information about Mean Well power supplies can be found at [www.meanwell.com](http://www.meanwell.com)



Lamp arm  
 Driver  
 Heatsink body  
 PCB  
 Silicone ring  
 Lens



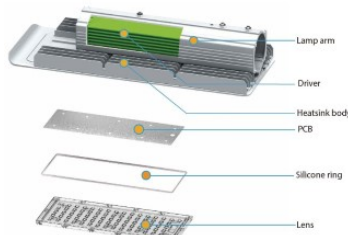
# LED street light PROLUMEN Slim silvery 230V 40W 4800lm 70x140° IP66 840

**Product code 15837**

Brand [PROLUMEN](#)  
 Supply voltage 230V  
 Output 40W  
 Luminous flux 4800lumens  
 Luminaire's efficiency lm79 120W  
 Correlated colour temperature pure white 4000K  
 Lens angle 70x140  
 Source of light [LUMILEDS](#)  
 Cri 80  
 Protection class IP66  
 Lifespan 50000h  
 Installation opening diameter 60mm  
 Weight 2100g  
 In package 1pc  
 Casing colour silvery  
 Casing material aluminum  
 Polishing matt  
 Power supply [MEAN WELL](#)  
 Work environment outdoor use  
 Operation temperature -40° -+50°C  
 Certificates CE, RoHS, ENEC



The LED street light Slim is a product of the PROLUMEN brand by the Estonian company LED House OÜ. The product uses LUMILEDS LUXEON 3030 2D LEDs and a Mean Well ELG series power supply. The housing is made of aluminum, powder-coated, and corrosion-resistant. The light is directed by a high-quality lens made of PMMA material. The recommended installation height for a 60W light is 4-6 meters. The light is powered by a Mean Well power supply, which is one of the most sold and widely used power supply manufacturers in the world. The input voltage of the power supplies ranges from 180 to 295V. A PFC function (power factor correction) is built-in. The working efficiency is up to 91.5%. Protection elements are built-in to safeguard against overheating, overvoltage, and overload. The power supplies have an IP67 protection class and are suitable for both indoor and outdoor use. Mean Well offers a 5-year manufacturer's warranty on the power supplies. More information about Mean Well power supplies can be found at [www.meanwell.com](http://www.meanwell.com)



Lamp arm  
 Driver  
 Heatsink body  
 PCB  
 Silicone ring  
 Lens

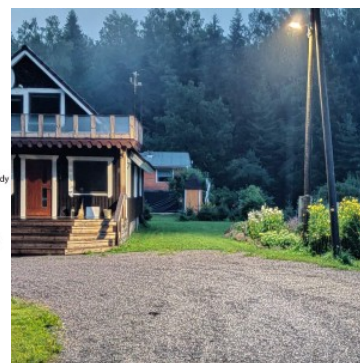
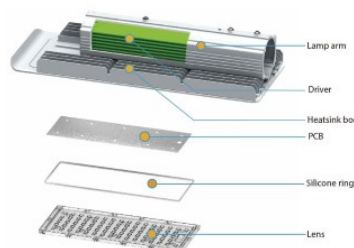




# LED street light PROLUMEN Slim silvery 230V 60W 7200lm 70x140° IP66 840

**Product code 13957**

Brand [PROLUMEN](#)  
 Supply voltage 230V  
 Output 60W  
 Luminous flux 7200lumens  
 Luminaire's efficiency lm79 120W  
 Correlated colour temperature pure white 4000K  
 Lens angle 70x140  
 Source of light [LUMILEDS](#)  
 Cri 80  
 Protection class IP66  
 Lifespan 50000h  
 Installation opening diameter 60mm  
 Weight 2100g  
 In package 1pc  
 Casing colour silvery  
 Casing material aluminum  
 Polishing matt  
 Power supply [MEAN WELL](#)  
 Work environment outdoor use  
 Operation temperature -40° -+50°C  
 Certificates CE, RoHS, ENEC  
 Warranty 5 years



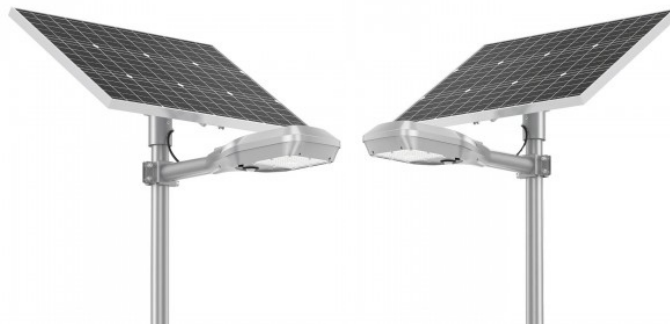
The LED street light Slim is a product of the PROLUMEN brand by the Estonian company LED House OÜ. The product uses LUMILEDS LUXEON 3030 2D LEDs and a Mean Well ELG series power supply. The housing is made of aluminum, powder-coated, and corrosion-resistant. The light is directed by a high-quality lens made of PMMA material. The recommended installation height for a 60W light is 4-6 meters. The light is powered by a Mean Well power supply, which is one of the most sold and widely used power supply manufacturers in the world. The input voltage of the power supplies ranges from 180 to 295V. A PFC function (power factor correction) is built-in. The working efficiency is up to 91.5%. Protection elements are built-in to safeguard against overheating, overvoltage, and overload. The power supplies have an IP67 protection class and are suitable for both indoor and outdoor use. Mean Well offers a 5-year manufacturer's warranty on the power supplies. More information about Mean Well power supplies can be found at [www.meanwell.com](http://www.meanwell.com)

# LED street light PROLUMEN ST57+30W Monocrystalline Solar Panel 20W 4000lm 120x50° IP66 740

**Product code 17957**

Brand [PROLUMEN](#)  
 Output 20W  
 Luminous flux 4000lumens  
 Luminaire's efficiency lm79 200W  
 Correlated colour temperature pure white 4000K  
 Lens angle 120x50  
 Cri 70  
 Protection class IP66  
 Lifespan 80000h  
 Llmf tm21 L80B10 @25°C 80.000h  
 Height 140.0mm  
 Width 345.0mm  
 Length 570.0mm  
 Weight 3900g  
 Casing material aluminum  
 Work environment outdoor use  
 Certificates CE, RoHS  
 Warranty 5 years

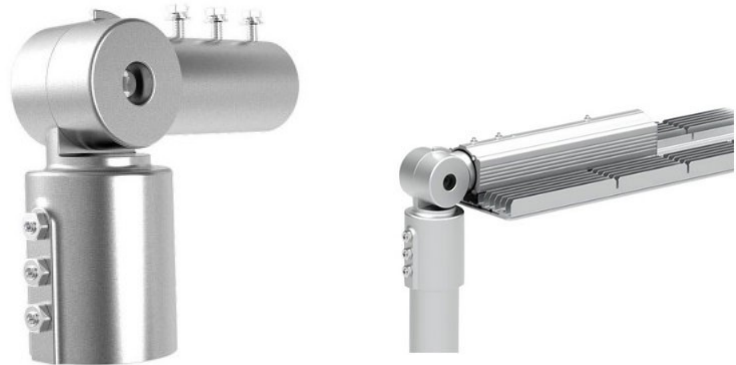
ST57 Solar-Powered Streetlight - And no cables are needed! ST57 is a full-range solar streetlight offering six different sizes: 10W, 20W, 30W, 40W, 50W, and 60W, making it ideal for various applications. Smart control features, such as a built-in microwave sensor and timer dimming, ensure longer discharge times. The adjustable mounting angle improves charging efficiency, and the removable battery makes maintenance simple. Key Features: MPPT controller and mono-crystalline solar panels: Maximum charging capability. LiFePO4 battery: Reliable and long-lasting energy storage. Aluminum alloy casing and polycarbonate optical lens: Durable and weather-resistant design. Easy to clean and maintain with a shell design allowing for quick battery replacement. Efficient heat dissipation. Smart control options, including a built-in microwave sensor and timer dimming, ensure energy efficiency. 360° adjustable connection and ±40° tilt angle adjustment. Quick and easy installation with a plug-and-play system. Applications: Rural roads, urban roads, walkways, parking lots, courtyards, plazas, and parks. NB! The product is available for pre-order, with a minimum order quantity of 10 units. Battery warranty 3 years, other parts of the light 5 years.



## LED street light Slim Adaptor 60

**Product code 14528**

Installation opening diameter 60mm



## LED street light Street Master gray 230V 35W 5950lm 155x80° IP66 DALI 740

**Product code 17782 DALI dimmable**

Supply voltage 230V  
 Power factor 0.98  
 Dimmable DALI  
 Output 35W  
 Luminous flux 5950lumens  
 Luminaire's efficiency lm79 170W  
 Correlated colour temperature pure white 4000K  
 Lens angle 155x80  
 Cri 70  
 Protection class IP66  
 Lifespan 80000h  
 Height 102.0mm  
 Width 209.0mm  
 Length 507.0mm  
 Weight 3300g  
 In package 1pc  
 Casing colour gray  
 Casing material aluminum  
 Polishing matt  
 No. of switches 30000pcs  
 Impact resistance IK09  
 Work environment outdoor use  
 Operation temperature -30° - +45°C  
 Certificates CE, ENEC  
 Warranty 5 years

