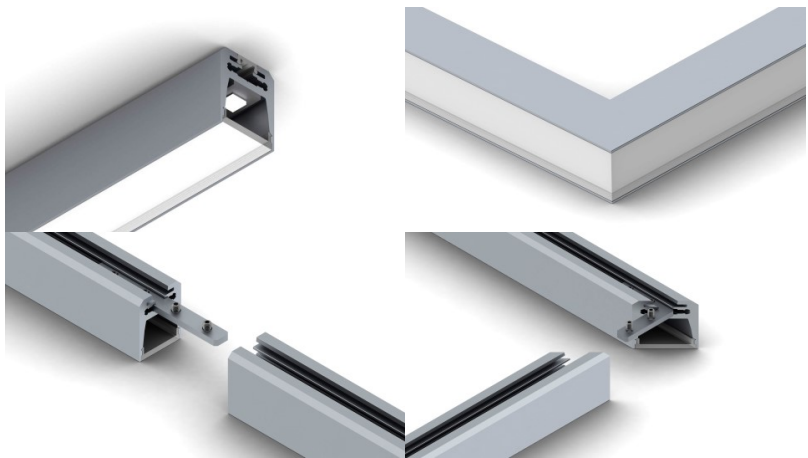


## Aluminium profile Alu Swiss 20

### Product code 14184

Maximum output 22W/1m  
Height 24.7mm  
Width 20.0mm  
Length 2000.0mm  
Casing material aluminum  
Polishing matt

A surface-mounted aluminum profile is a practical method for installing an LED strip effectively. With an aluminum profile, there is no risk of the LED strip shifting out of place, and the profile cover maintains uniform and cozy light distribution. The profile is durable yet lightweight, ensuring a long lifespan and stability. Installing a surface-mounted aluminum profile is very easy. An aluminum profile is ideal for use in many different rooms. In the kitchen, a high-power LED strip with an aluminum profile works well above the work surface. In the living room, this combination can create cozy accent lighting. High IP-rated products are perfect for bathrooms, and in retail, LED strips with aluminum profiles are ideal for highlighting products! Trust your lighting project to the experienced team of LED House - [let's bring your vision to life!](#)

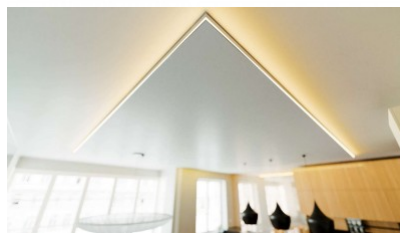
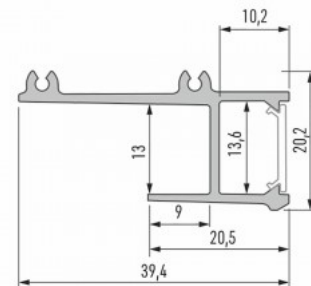


## Aluminium profile LUMINES APA12 2m silvery

**Product code 17493**

Brand [LUMINES](#)  
 Height 20.2mm  
 Width 43.0mm  
 Length 2000.0mm  
 Casing colour silvery  
 Casing material aluminum

A surface-mounted aluminum profile is a practical method for installing an LED strip effectively. With an aluminum profile, there is no risk of the LED strip shifting out of place, and the profile cover maintains uniform and cozy light distribution. The profile is durable yet lightweight, ensuring a long lifespan and stability. Installing a surface-mounted aluminum profile is very easy. An aluminum profile is ideal for use in many different rooms. In the kitchen, a high-power LED strip with an aluminum profile works well above the work surface. In the living room, this combination can create cozy accent lighting. High IP-rated products are perfect for bathrooms, and in retail, LED strips with aluminum profiles are ideal for highlighting products! Trust your lighting project to the experienced team of LED House - [let's bring your vision to life!](#)



## Aluminium profile LUMINES CLARO 2m black

**Product code 15982**

Brand [LUMINES](#)  
 Height 73.0mm  
 Width 43.0mm  
 Length 2000.0mm  
 Casing colour black  
 Casing material aluminum



A surface-mounted aluminum profile is a practical method for installing an LED strip effectively. With an aluminum profile, there is no risk of the LED strip shifting out of place, and the profile cover maintains uniform and cozy light distribution. The profile is durable yet lightweight, ensuring a long lifespan and stability. Installing a surface-mounted aluminum profile is very easy. An aluminum profile is ideal for use in many different rooms. In the kitchen, a high-power LED strip with an aluminum profile works well above the work surface. In the living room, this combination can create cozy accent lighting. High IP-rated products are perfect for bathrooms, and in retail, LED strips with aluminum profiles are ideal for highlighting products! Trust your lighting project to the experienced team of LED House - [let's bring your vision to life!](#)

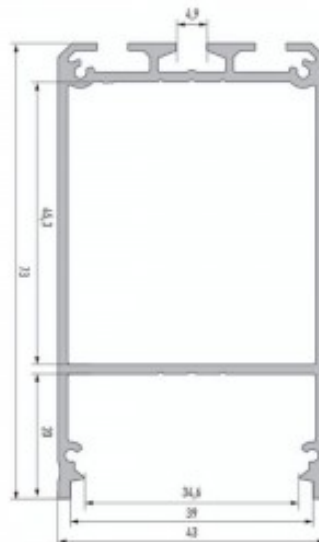


## Aluminium profile LUMINES CLARO 2m silvery

**Product code 16196**

Brand [LUMINES](#)  
 Height 73.0mm  
 Width 43.0mm  
 Length 2000.0mm  
 Casing colour silvery  
 Casing material aluminum

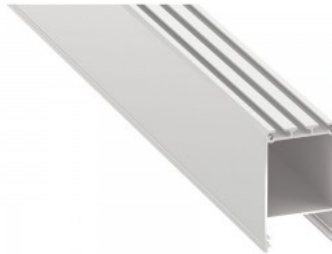
A surface-mounted aluminum profile is a practical method for installing an LED strip effectively. With an aluminum profile, there is no risk of the LED strip shifting out of place, and the profile cover maintains uniform and cozy light distribution. The profile is durable yet lightweight, ensuring a long lifespan and stability. Installing a surface-mounted aluminum profile is very easy. An aluminum profile is ideal for use in many different rooms. In the kitchen, a high-power LED strip with an aluminum profile works well above the work surface. In the living room, this combination can create cozy accent lighting. High IP-rated products are perfect for bathrooms, and in retail, LED strips with aluminum profiles are ideal for highlighting products! Trust your lighting project to the experienced team of LED House - [let's bring your vision to life!](#)



## Aluminium profile LUMINES CLARO 2m white

**Product code 16347**

Brand [LUMINES](#)  
 Height 73.0mm  
 Width 43.0mm  
 Length 2000.0mm  
 Casing colour white  
 Casing material aluminum



A surface-mounted aluminum profile is a practical method for installing an LED strip effectively. With an aluminum profile, there is no risk of the LED strip shifting out of place, and the profile cover maintains uniform and cozy light distribution. The profile is durable yet lightweight, ensuring a long lifespan and stability. Installing a surface-mounted aluminum profile is very easy. An aluminum profile is ideal for use in many different rooms. In the kitchen, a high-power LED strip with an aluminum profile works well above the work surface. In the living room, this combination can create cozy accent lighting. High IP-rated products are perfect for bathrooms, and in retail, LED strips with aluminum profiles are ideal for highlighting products! Trust your lighting project to the experienced team of LED House - [let's bring your vision to life!](#)



## Aluminium profile LUMINES CLARO 3m black

**Product code 16966**

Brand [LUMINES](#)  
 Height 73.0mm  
 Width 43.0mm  
 Length 3000.0mm  
 Casing colour black  
 Casing material aluminum



A surface-mounted aluminum profile is a practical method for installing an LED strip effectively. With an aluminum profile, there is no risk of the LED strip shifting out of place, and the profile cover maintains uniform and cozy light distribution. The profile is durable yet lightweight, ensuring a long lifespan and stability. Installing a surface-mounted aluminum profile is very easy. An aluminum profile is ideal for use in many different rooms. In the kitchen, a high-power LED strip with an aluminum profile works well above the work surface. In the living room, this combination can create cozy accent lighting. High IP-rated products are perfect for bathrooms, and in retail, LED strips with aluminum profiles are ideal for highlighting products! Trust your lighting project to the experienced team of LED House - [let's bring your vision to life!](#)

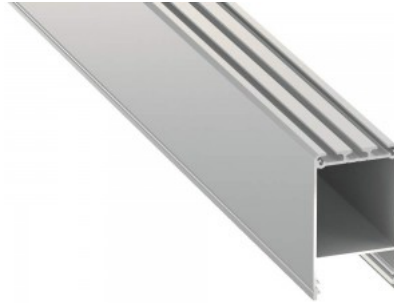


## Aluminium profile LUMINES CLARO 3m silvery

**Product code 15393**

Brand [LUMINES](#)  
 Height 73.0mm  
 Width 43.0mm  
 Length 3000.0mm  
 Casing colour silvery  
 Casing material aluminum

A surface-mounted aluminum profile is a practical method for installing an LED strip effectively. With an aluminum profile, there is no risk of the LED strip shifting out of place, and the profile cover maintains uniform and cozy light distribution. The profile is durable yet lightweight, ensuring a long lifespan and stability. Installing a surface-mounted aluminum profile is very easy. An aluminum profile is ideal for use in many different rooms. In the kitchen, a high-power LED strip with an aluminum profile works well above the work surface. In the living room, this combination can create cozy accent lighting. High IP-rated products are perfect for bathrooms, and in retail, LED strips with aluminum profiles are ideal for highlighting products! Trust your lighting project to the experienced team of LED House - [let's bring your vision to life!](#)

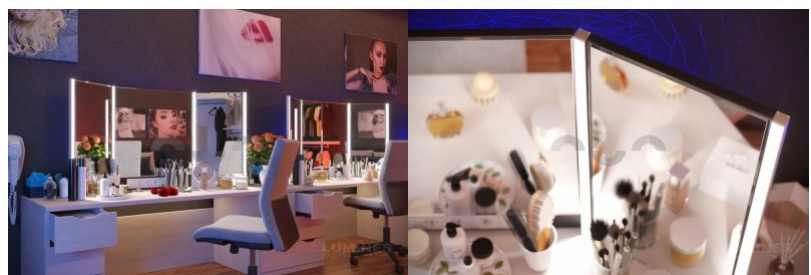
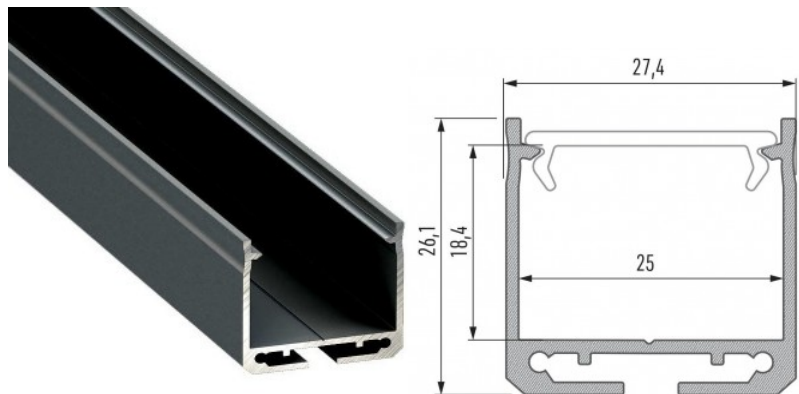


## Aluminium profile LUMINES DILEDA 2m black

**Product code 15418**

Brand [LUMINES](#)  
 Height 26.1mm  
 Width 27.4mm  
 Length 2020.0mm  
 In box 6pcs  
 Casing colour black  
 Casing material aluminum

A surface-mounted aluminum profile is a practical method for installing an LED strip effectively. With an aluminum profile, there is no risk of the LED strip shifting out of place, and the profile cover maintains uniform and cozy light distribution. The profile is durable yet lightweight, ensuring a long lifespan and stability. Installing a surface-mounted aluminum profile is very easy. An aluminum profile is ideal for use in many different rooms. In the kitchen, a high-power LED strip with an aluminum profile works well above the work surface. In the living room, this combination can create cozy accent lighting. High IP-rated products are perfect for bathrooms, and in retail, LED strips with aluminum profiles are ideal for highlighting products! Trust your lighting project to the experienced team of LED House - [let's bring your vision to life!](#)



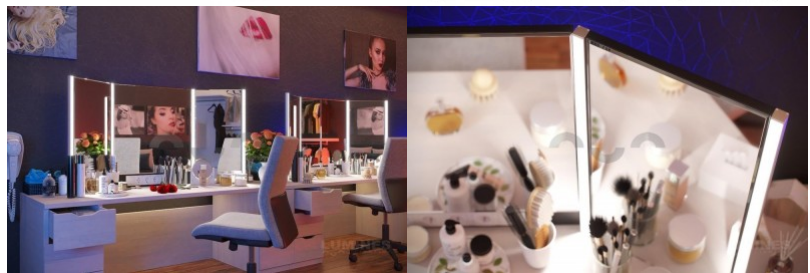
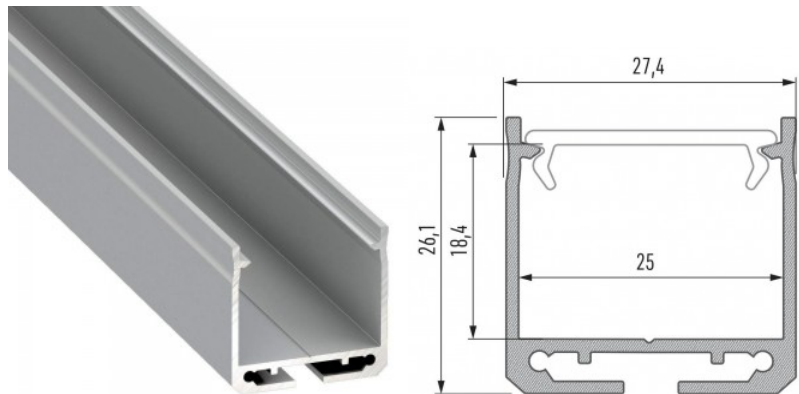


## Aluminium profile LUMINES DILEDA 2m silvery

**Product code 14722**

Brand [LUMINES](#)  
 Height 26.1mm  
 Width 27.4mm  
 Length 2020.0mm  
 Casing colour silvery  
 Casing material aluminum

A surface-mounted aluminum profile is a practical method for installing an LED strip effectively. With an aluminum profile, there is no risk of the LED strip shifting out of place, and the profile cover maintains uniform and cozy light distribution. The profile is durable yet lightweight, ensuring a long lifespan and stability. Installing a surface-mounted aluminum profile is very easy. An aluminum profile is ideal for use in many different rooms. In the kitchen, a high-power LED strip with an aluminum profile works well above the work surface. In the living room, this combination can create cozy accent lighting. High IP-rated products are perfect for bathrooms, and in retail, LED strips with aluminum profiles are ideal for highlighting products! Trust your lighting project to the experienced team of LED House - [let's bring your vision to life!](#)

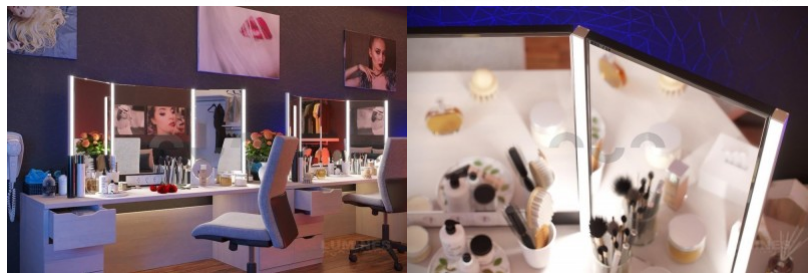
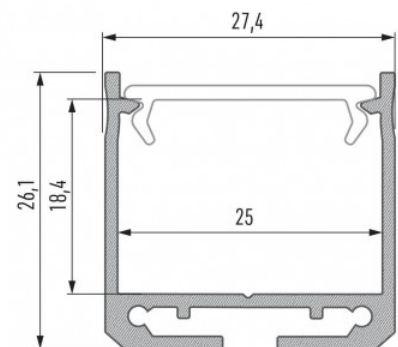


## Aluminium profile LUMINES DILEDA 2m white

**Product code 14673**

Brand [LUMINES](#)  
 Height 26.1mm  
 Width 27.4mm  
 In package 6pcs  
 Casing colour white  
 Casing material aluminum

A surface-mounted aluminum profile is a practical method for installing an LED strip effectively. With an aluminum profile, there is no risk of the LED strip shifting out of place, and the profile cover maintains uniform and cozy light distribution. The profile is durable yet lightweight, ensuring a long lifespan and stability. Installing a surface-mounted aluminum profile is very easy. An aluminum profile is ideal for use in many different rooms. In the kitchen, a high-power LED strip with an aluminum profile works well above the work surface. In the living room, this combination can create cozy accent lighting. High IP-rated products are perfect for bathrooms, and in retail, LED strips with aluminum profiles are ideal for highlighting products! Trust your lighting project to the experienced team of LED House - [let's bring your vision to life!](#)

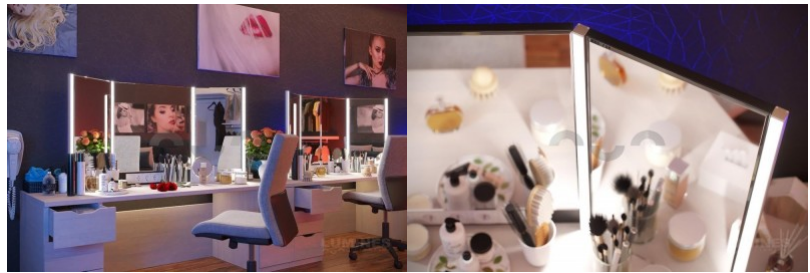
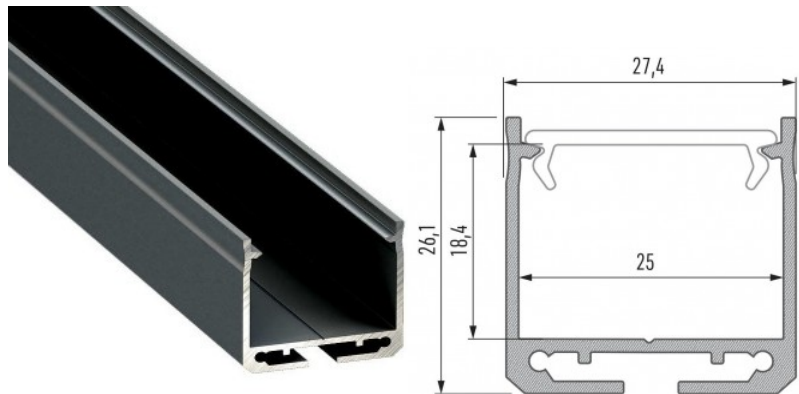


## Aluminium profile LUMINES DILEDA 3m black

**Product code 16211**

Brand [LUMINES](#)  
 Height 26.1mm  
 Width 27.4mm  
 Length 3000.0mm  
 Casing colour black  
 Casing material aluminum

A surface-mounted aluminum profile is a practical method for installing an LED strip effectively. With an aluminum profile, there is no risk of the LED strip shifting out of place, and the profile cover maintains uniform and cozy light distribution. The profile is durable yet lightweight, ensuring a long lifespan and stability. Installing a surface-mounted aluminum profile is very easy. An aluminum profile is ideal for use in many different rooms. In the kitchen, a high-power LED strip with an aluminum profile works well above the work surface. In the living room, this combination can create cozy accent lighting. High IP-rated products are perfect for bathrooms, and in retail, LED strips with aluminum profiles are ideal for highlighting products! Trust your lighting project to the experienced team of LED House - [let's bring your vision to life!](#)

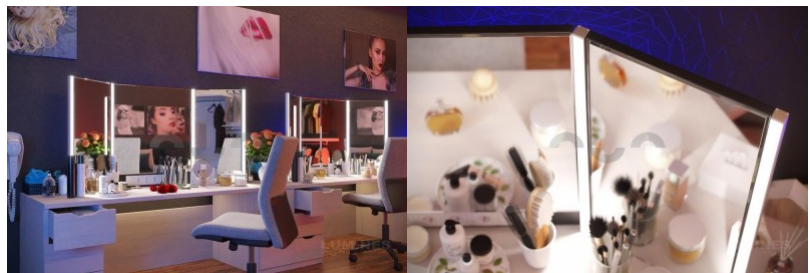
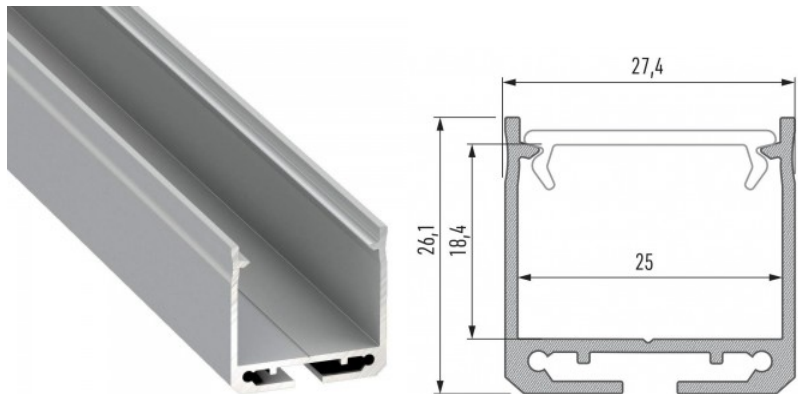


## Aluminium profile LUMINES DILEDA 3m silvery

**Product code 16457**

Brand [LUMINES](#)  
 Height 26.1mm  
 Width 27.4mm  
 Length 3000.0mm  
 Casing colour silvery  
 Casing material aluminum

A surface-mounted aluminum profile is a practical method for installing an LED strip effectively. With an aluminum profile, there is no risk of the LED strip shifting out of place, and the profile cover maintains uniform and cozy light distribution. The profile is durable yet lightweight, ensuring a long lifespan and stability. Installing a surface-mounted aluminum profile is very easy. An aluminum profile is ideal for use in many different rooms. In the kitchen, a high-power LED strip with an aluminum profile works well above the work surface. In the living room, this combination can create cozy accent lighting. High IP-rated products are perfect for bathrooms, and in retail, LED strips with aluminum profiles are ideal for highlighting products! Trust your lighting project to the experienced team of LED House - [let's bring your vision to life!](#)

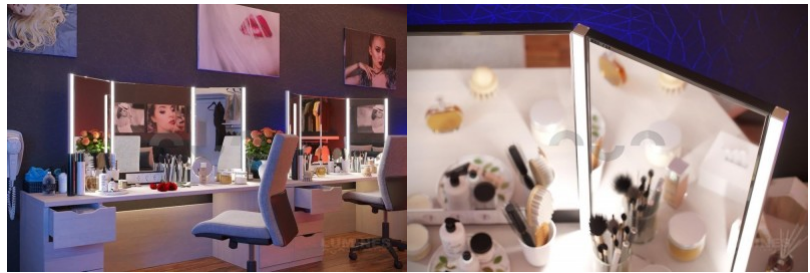
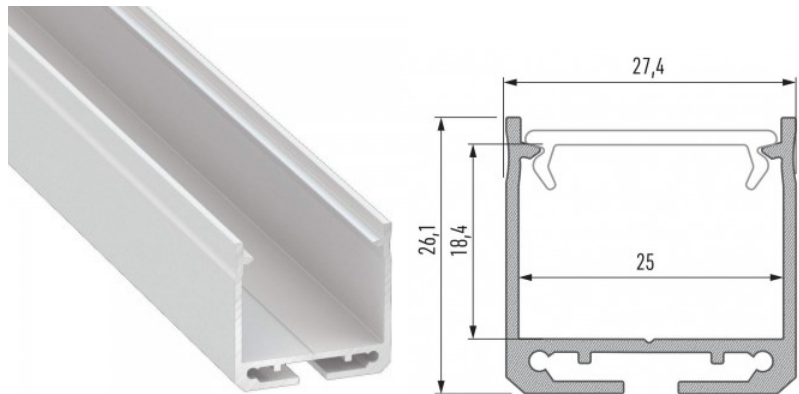


## Aluminium profile LUMINES DILEDA 3m white

**Product code 14814**

Brand [LUMINES](#)  
 Height 26.1mm  
 Width 27.4mm  
 Length 3000.0mm  
 Casing colour white  
 Casing material aluminum

A surface-mounted aluminum profile is a practical method for installing an LED strip effectively. With an aluminum profile, there is no risk of the LED strip shifting out of place, and the profile cover maintains uniform and cozy light distribution. The profile is durable yet lightweight, ensuring a long lifespan and stability. Installing a surface-mounted aluminum profile is very easy. An aluminum profile is ideal for use in many different rooms. In the kitchen, a high-power LED strip with an aluminum profile works well above the work surface. In the living room, this combination can create cozy accent lighting. High IP-rated products are perfect for bathrooms, and in retail, LED strips with aluminum profiles are ideal for highlighting products! Trust your lighting project to the experienced team of LED House - [let's bring your vision to life!](#)

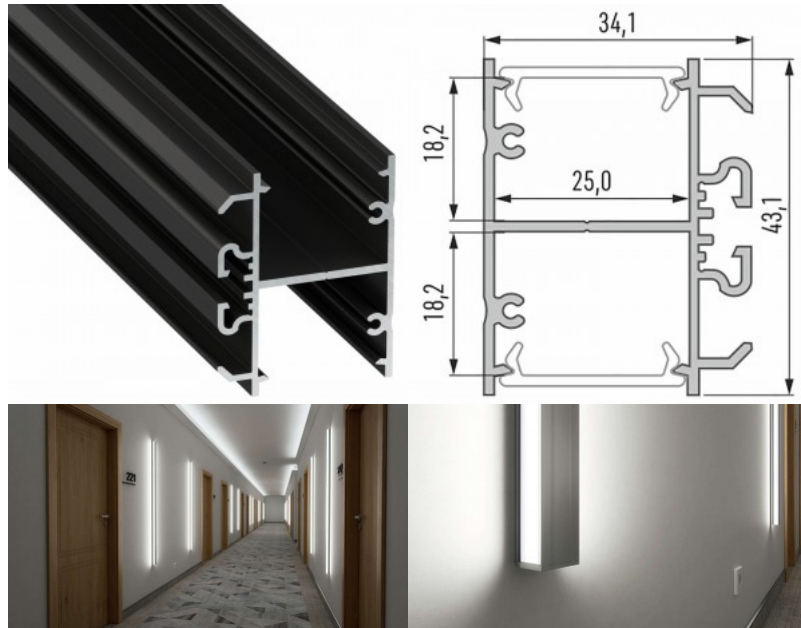


## Aluminium profile LUMINES DOPIO 2m black

**Product code 17454**

Brand [LUMINES](#)  
 Height 34.1mm  
 Width 43.1mm  
 Length 2020.0mm  
 Casing colour black  
 Casing material aluminum

A surface-mounted aluminum profile is a practical method for installing an LED strip effectively. With an aluminum profile, there is no risk of the LED strip shifting out of place, and the profile cover maintains uniform and cozy light distribution. The profile is durable yet lightweight, ensuring a long lifespan and stability. Installing a surface-mounted aluminum profile is very easy. An aluminum profile is ideal for use in many different rooms. In the kitchen, a high-power LED strip with an aluminum profile works well above the work surface. In the living room, this combination can create cozy accent lighting. High IP-rated products are perfect for bathrooms, and in retail, LED strips with aluminum profiles are ideal for highlighting products! Trust your lighting project to the experienced team of LED House - [let's bring your vision to life!](#)

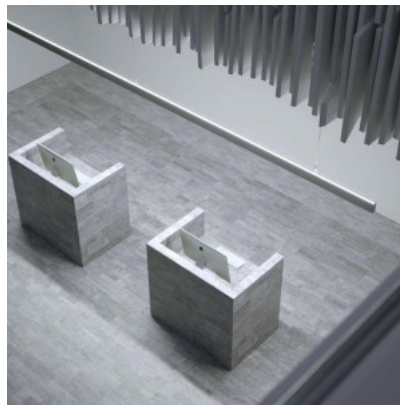
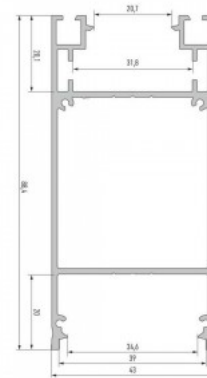


## Aluminium profile LUMINES DULIO 2m black

**Product code 17331**

Brand [LUMINES](#)  
 Height 88.4mm  
 Width 43.0mm  
 Length 2020.0mm  
 Casing colour black  
 Casing material aluminum

Hangable black aluminum profile. Aluminum profile is a practical method for installing an LED strip effectively. With an aluminum profile, there is no risk of the LED strip shifting out of place, and the profile cover maintains uniform and cozy light distribution. The profile is durable yet lightweight, ensuring a long lifespan and stability. Installing a surface-mounted aluminum profile is very easy. An aluminum profile is ideal for use in many different rooms. In the kitchen, a high-power LED strip with an aluminum profile works well above the work surface. In the living room, this combination can create cozy accent lighting. High IP-rated products are perfect for bathrooms, and in retail, LED strips with aluminum profiles are ideal for highlighting products! Trust your lighting project to the experienced team of LED House - [let's bring your vision to life!](#)

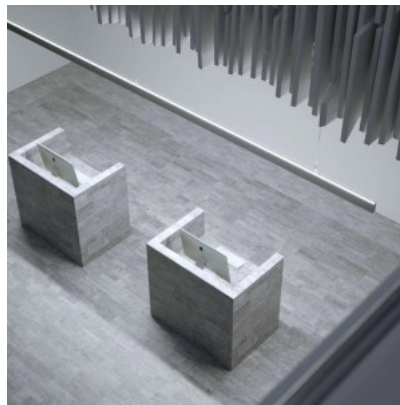
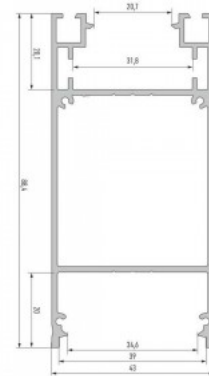


## Aluminium profile LUMINES DULIO 2m white

**Product code 17332**

Brand [LUMINES](#)  
 Height 88.4mm  
 Width 43.0mm  
 Length 2020.0mm  
 Casing colour white  
 Casing material aluminum

Hangable white aluminum profile. Aluminum profile is a practical method for installing an LED strip effectively. With an aluminum profile, there is no risk of the LED strip shifting out of place, and the profile cover maintains uniform and cozy light distribution. The profile is durable yet lightweight, ensuring a long lifespan and stability. Installing a surface-mounted aluminum profile is very easy. An aluminum profile is ideal for use in many different rooms. In the kitchen, a high-power LED strip with an aluminum profile works well above the work surface. In the living room, this combination can create cozy accent lighting. High IP-rated products are perfect for bathrooms, and in retail, LED strips with aluminum profiles are ideal for highlighting products! Trust your lighting project to the experienced team of LED House - [let's bring your vision to life!](#)



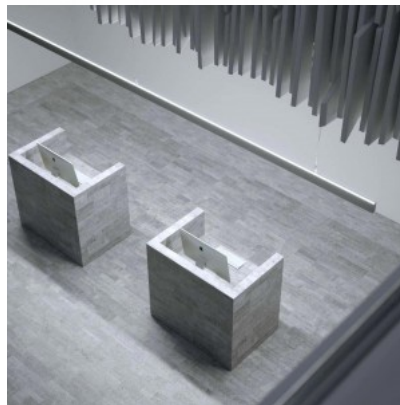
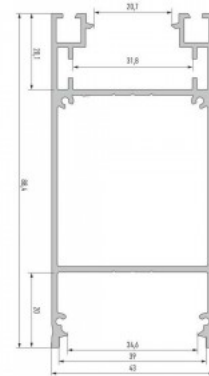


## Aluminium profile LUMINES DULIO 3m black

**Product code 17723**

Brand [LUMINES](#)  
 Height 88.4mm  
 Width 43.0mm  
 Length 3000.0mm  
 Casing colour black  
 Casing material aluminum

Hangable black aluminum profile. Aluminum profile is a practical method for installing an LED strip effectively. With an aluminum profile, there is no risk of the LED strip shifting out of place, and the profile cover maintains uniform and cozy light distribution. The profile is durable yet lightweight, ensuring a long lifespan and stability. Installing a surface-mounted aluminum profile is very easy. An aluminum profile is ideal for use in many different rooms. In the kitchen, a high-power LED strip with an aluminum profile works well above the work surface. In the living room, this combination can create cozy accent lighting. High IP-rated products are perfect for bathrooms, and in retail, LED strips with aluminum profiles are ideal for highlighting products! Trust your lighting project to the experienced team of LED House - [let's bring your vision to life!](#)

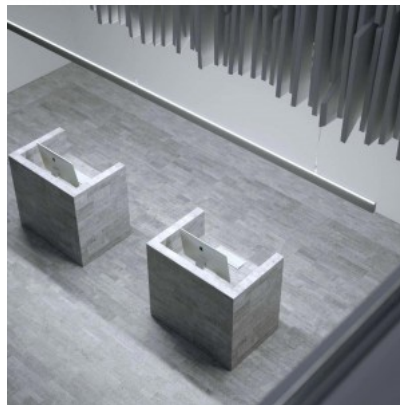
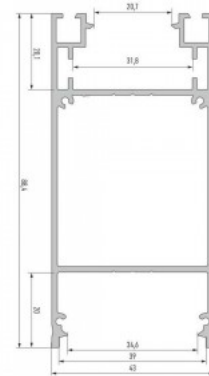


## Aluminium profile LUMINES DULIO 3m white

**Product code 17722**

Brand [LUMINES](#)  
 Height 88.4mm  
 Width 43.0mm  
 Length 3000.0mm  
 Casing colour white  
 Casing material aluminum

Hangable white aluminum profile. Aluminum profile is a practical method for installing an LED strip effectively. With an aluminum profile, there is no risk of the LED strip shifting out of place, and the profile cover maintains uniform and cozy light distribution. The profile is durable yet lightweight, ensuring a long lifespan and stability. Installing a surface-mounted aluminum profile is very easy. An aluminum profile is ideal for use in many different rooms. In the kitchen, a high-power LED strip with an aluminum profile works well above the work surface. In the living room, this combination can create cozy accent lighting. High IP-rated products are perfect for bathrooms, and in retail, LED strips with aluminum profiles are ideal for highlighting products! Trust your lighting project to the experienced team of LED House - [let's bring your vision to life!](#)



## Aluminium profile LUMINES I6 2m silvery

**Product code 17299**

Brand [LUMINES](#)  
 Height 325.0mm  
 Width 43.0mm  
 Length 2000.0mm  
 Casing colour silvery

Aluminum profile for installing illuminated plexiglass or glass on the ceiling or wall. Usage options: Illuminated shelves for stores. Informational boards on the ceiling. Installation requires: [Left end cap](#) [Right end cap](#) [Fari profile Mounting tape](#) Trust your lighting project to the experienced team of LED House - [let's bring your vision to life!](#)

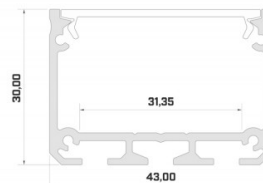


## Aluminium profile LUMINES ILEDO 2m black

**Product code 15439**

Brand [LUMINES](#)  
 Height 30.0mm  
 Width 43.0mm  
 Length 2020.0mm  
 In box 6pcs  
 Casing colour black  
 Casing material aluminum

A surface-mounted aluminum profile is a practical method for installing an LED strip effectively. With an aluminum profile, there is no risk of the LED strip shifting out of place, and the profile cover maintains uniform and cozy light distribution. The profile is durable yet lightweight, ensuring a long lifespan and stability. Installing a surface-mounted aluminum profile is very easy. An aluminum profile is ideal for use in many different rooms. In the kitchen, a high-power LED strip with an aluminum profile works well above the work surface. In the living room, this combination can create cozy accent lighting. High IP-rated products are perfect for bathrooms, and in retail, LED strips with aluminum profiles are ideal for highlighting products! Trust your lighting project to the experienced team of LED House - [let's bring your vision to life!](#)

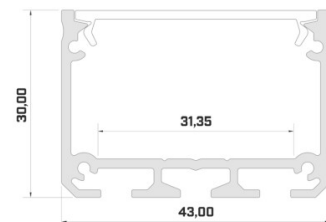


## Aluminium profile LUMINES ILEDO 2m silvery

**Product code 14540**

Brand [LUMINES](#)  
 Height 30.0mm  
 Width 43.0mm  
 Length 2020.0mm  
 Casing colour silvery  
 Casing material aluminum

A surface-mounted aluminum profile is a practical method for installing an LED strip effectively. With an aluminum profile, there is no risk of the LED strip shifting out of place, and the profile cover maintains uniform and cozy light distribution. The profile is durable yet lightweight, ensuring a long lifespan and stability. Installing a surface-mounted aluminum profile is very easy. An aluminum profile is ideal for use in many different rooms. In the kitchen, a high-power LED strip with an aluminum profile works well above the work surface. In the living room, this combination can create cozy accent lighting. High IP-rated products are perfect for bathrooms, and in retail, LED strips with aluminum profiles are ideal for highlighting products! Trust your lighting project to the experienced team of LED House - [let's bring your vision to life!](#)



## Aluminium profile LUMINES ILEDO 2m white

**Product code 14721**

Brand [LUMINES](#)

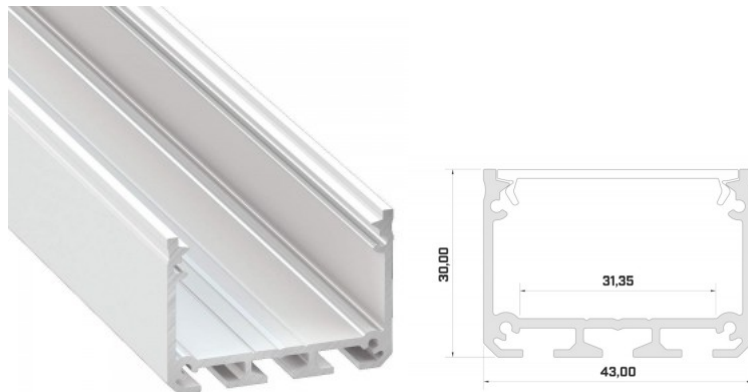
Height 30.0mm

Width 43.0mm

Casing colour white

Casing material aluminum

A surface-mounted aluminum profile is a practical method for installing an LED strip effectively. With an aluminum profile, there is no risk of the LED strip shifting out of place, and the profile cover maintains uniform and cozy light distribution. The profile is durable yet lightweight, ensuring a long lifespan and stability. Installing a surface-mounted aluminum profile is very easy. An aluminum profile is ideal for use in many different rooms. In the kitchen, a high-power LED strip with an aluminum profile works well above the work surface. In the living room, this combination can create cozy accent lighting. High IP-rated products are perfect for bathrooms, and in retail, LED strips with aluminum profiles are ideal for highlighting products! Trust your lighting project to the experienced team of LED House - [let's bring your vision to life!](#)



## Aluminium profile LUMINES ILEDO 3m black

**Product code 15803**

Brand [LUMINES](#)

Height 30.0mm

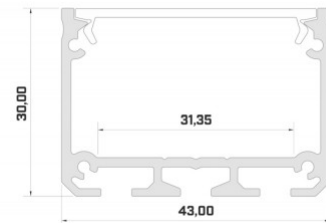
Width 43.0mm

Length 3000.0mm

Casing colour black

Casing material aluminum

A surface-mounted aluminum profile is a practical method for installing an LED strip effectively. With an aluminum profile, there is no risk of the LED strip shifting out of place, and the profile cover maintains uniform and cozy light distribution. The profile is durable yet lightweight, ensuring a long lifespan and stability. Installing a surface-mounted aluminum profile is very easy. An aluminum profile is ideal for use in many different rooms. In the kitchen, a high-power LED strip with an aluminum profile works well above the work surface. In the living room, this combination can create cozy accent lighting. High IP-rated products are perfect for bathrooms, and in retail, LED strips with aluminum profiles are ideal for highlighting products! Trust your lighting project to the experienced team of LED House - [let's bring your vision to life!](#)

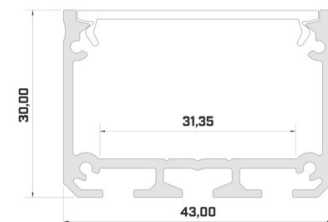


## Aluminium profile LUMINES ILEDO 3m silvery

**Product code 15636**

Brand [LUMINES](#)  
 Height 30.0mm  
 Width 43.0mm  
 Length 3000.0mm  
 Casing colour silvery  
 Casing material aluminum

A surface-mounted aluminum profile is a practical method for installing an LED strip effectively. With an aluminum profile, there is no risk of the LED strip shifting out of place, and the profile cover maintains uniform and cozy light distribution. The profile is durable yet lightweight, ensuring a long lifespan and stability. Installing a surface-mounted aluminum profile is very easy. An aluminum profile is ideal for use in many different rooms. In the kitchen, a high-power LED strip with an aluminum profile works well above the work surface. In the living room, this combination can create cozy accent lighting. High IP-rated products are perfect for bathrooms, and in retail, LED strips with aluminum profiles are ideal for highlighting products! Trust your lighting project to the experienced team of LED House - [let's bring your vision to life!](#)

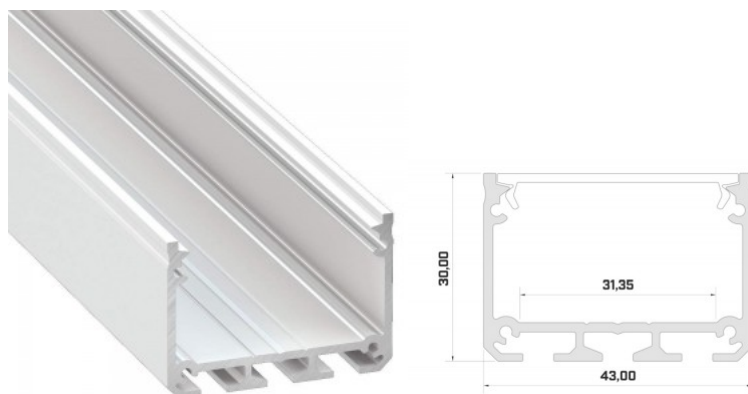


## Aluminium profile LUMINES ILEDO 3m white

**Product code 14719**

Brand [LUMINES](#)  
Height 30.0mm  
Width 43.0mm  
Length 3000.0mm  
Casing colour white  
Casing material aluminum

A surface-mounted aluminum profile is a practical method for installing an LED strip effectively. With an aluminum profile, there is no risk of the LED strip shifting out of place, and the profile cover maintains uniform and cozy light distribution. The profile is durable yet lightweight, ensuring a long lifespan and stability. Installing a surface-mounted aluminum profile is very easy. An aluminum profile is ideal for use in many different rooms. In the kitchen, a high-power LED strip with an aluminum profile works well above the work surface. In the living room, this combination can create cozy accent lighting. High IP-rated products are perfect for bathrooms, and in retail, LED strips with aluminum profiles are ideal for highlighting products! Trust your lighting project to the experienced team of LED House - [let's bring your vision to life!](#)





## Aluminium profile LUMINES Logi 2m silvery

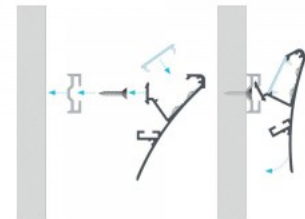
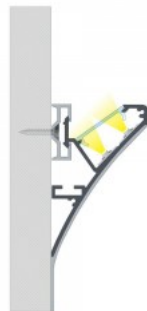
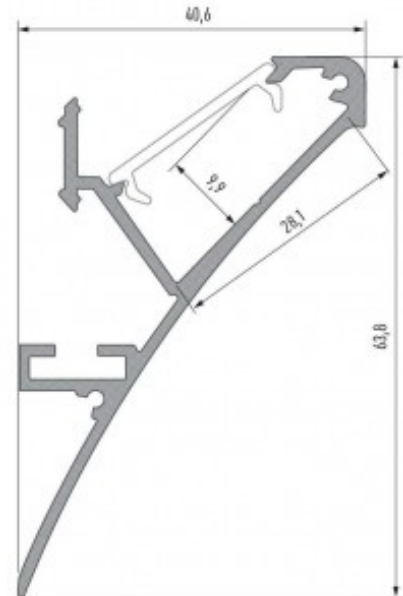
**Product code 15516**

Brand [LUMINES](#)

Casing colour silvery

Casing material aluminum

A surface-mounted aluminum profile is a practical method for installing an LED strip effectively. With an aluminum profile, there is no risk of the LED strip shifting out of place, and the profile cover maintains uniform and cozy light distribution. The profile is durable yet lightweight, ensuring a long lifespan and stability. Installing a surface-mounted aluminum profile is very easy. An aluminum profile is ideal for use in many different rooms. In the kitchen, a high-power LED strip with an aluminum profile works well above the work surface. In the living room, this combination can create cozy accent lighting. High IP-rated products are perfect for bathrooms, and in retail, LED strips with aluminum profiles are ideal for highlighting products! Trust your lighting project to the experienced team of LED House - [let's bring your vision to life!](#)



## Aluminium profile LUMINES Logi 2m white

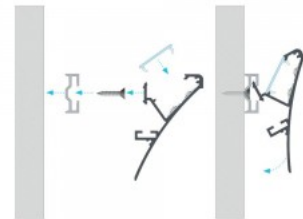
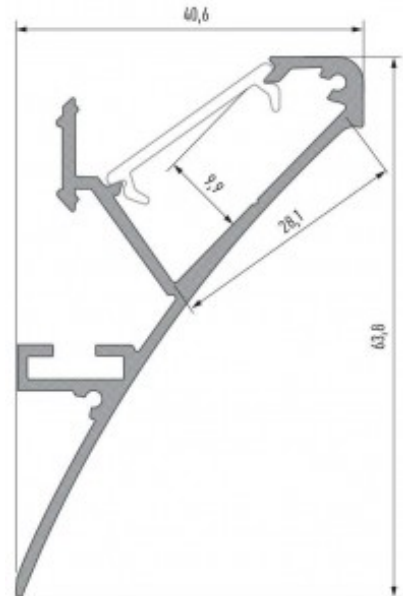
**Product code 15518**

Brand [LUMINES](#)

Casing colour white

Casing material aluminum

A surface-mounted aluminum profile is a practical method for installing an LED strip effectively. With an aluminum profile, there is no risk of the LED strip shifting out of place, and the profile cover maintains uniform and cozy light distribution. The profile is durable yet lightweight, ensuring a long lifespan and stability. Installing a surface-mounted aluminum profile is very easy. An aluminum profile is ideal for use in many different rooms. In the kitchen, a high-power LED strip with an aluminum profile works well above the work surface. In the living room, this combination can create cozy accent lighting. High IP-rated products are perfect for bathrooms, and in retail, LED strips with aluminum profiles are ideal for highlighting products! Trust your lighting project to the experienced team of LED House - [let's bring your vision to life!](#)

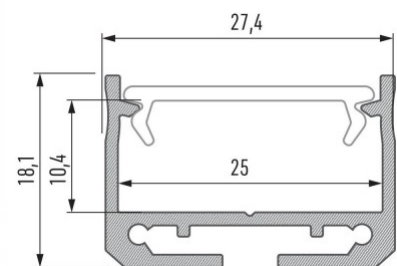


## Aluminium profile LUMINES SILEDA 2m black

**Product code 16825**

Brand [LUMINES](#)  
 Height 18.1mm  
 Width 27.4mm  
 Length 2020.0mm  
 Casing colour black  
 Casing material aluminum  
 Polishing matt

A surface-mounted aluminum profile is a practical method for installing an LED strip effectively. With an aluminum profile, there is no risk of the LED strip shifting out of place, and the profile cover maintains uniform and cozy light distribution. The profile is durable yet lightweight, ensuring a long lifespan and stability. Installing a surface-mounted aluminum profile is very easy. An aluminum profile is ideal for use in many different rooms. In the kitchen, a high-power LED strip with an aluminum profile works well above the work surface. In the living room, this combination can create cozy accent lighting. High IP-rated products are perfect for bathrooms, and in retail, LED strips with aluminum profiles are ideal for highlighting products! Trust your lighting project to the experienced team of LED House - [let's bring your vision to life!](#)

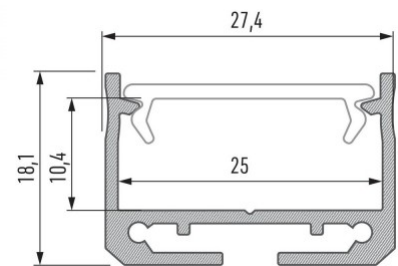


## Aluminium profile LUMINES SILEDA 2m silvery

**Product code 14674**

Brand [LUMINES](#)  
 Height 18.1mm  
 Width 27.4mm  
 Length 2020.0mm  
 Casing colour silvery  
 Casing material aluminum  
 Polishing matt

A surface-mounted aluminum profile is a practical method for installing an LED strip effectively. With an aluminum profile, there is no risk of the LED strip shifting out of place, and the profile cover maintains uniform and cozy light distribution. The profile is durable yet lightweight, ensuring a long lifespan and stability. Installing a surface-mounted aluminum profile is very easy. An aluminum profile is ideal for use in many different rooms. In the kitchen, a high-power LED strip with an aluminum profile works well above the work surface. In the living room, this combination can create cozy accent lighting. High IP-rated products are perfect for bathrooms, and in retail, LED strips with aluminum profiles are ideal for highlighting products! Trust your lighting project to the experienced team of LED House - [let's bring your vision to life!](#)

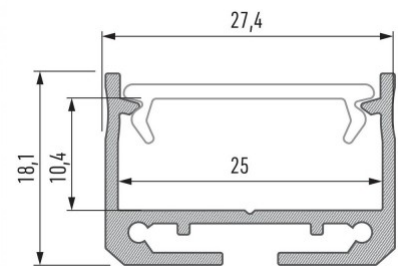


## Aluminium profile LUMINES SILEDA 2m white

**Product code 17811**

Brand [LUMINES](#)  
 Height 18.1mm  
 Width 27.4mm  
 Length 2020.0mm  
 Casing colour white  
 Casing material aluminum  
 Polishing matt

A surface-mounted aluminum profile is a practical method for installing an LED strip effectively. With an aluminum profile, there is no risk of the LED strip shifting out of place, and the profile cover maintains uniform and cozy light distribution. The profile is durable yet lightweight, ensuring a long lifespan and stability. Installing a surface-mounted aluminum profile is very easy. An aluminum profile is ideal for use in many different rooms. In the kitchen, a high-power LED strip with an aluminum profile works well above the work surface. In the living room, this combination can create cozy accent lighting. High IP-rated products are perfect for bathrooms, and in retail, LED strips with aluminum profiles are ideal for highlighting products! Trust your lighting project to the experienced team of LED House - [let's bring your vision to life!](#)

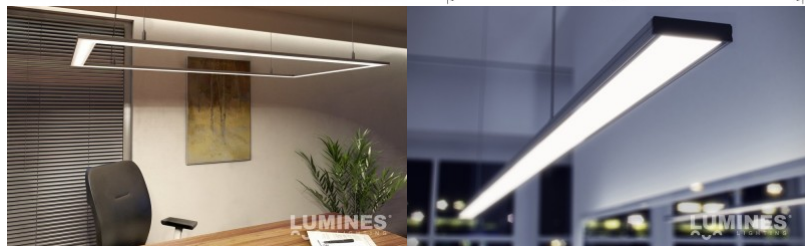
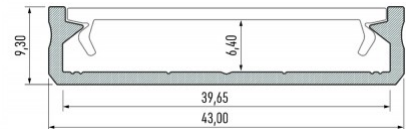


## Aluminium profile LUMINES SOLIS 2m black

**Product code 17203**

Brand [LUMINES](#)  
 Height 9.3mm  
 Width 43.0mm  
 Length 2020.0mm  
 Casing colour black  
 Casing material aluminum

A surface-mounted aluminum profile is a practical method for installing an LED strip effectively. With an aluminum profile, there is no risk of the LED strip shifting out of place, and the profile cover maintains uniform and cozy light distribution. The profile is durable yet lightweight, ensuring a long lifespan and stability. Installing a surface-mounted aluminum profile is very easy. An aluminum profile is ideal for use in many different rooms. In the kitchen, a high-power LED strip with an aluminum profile works well above the work surface. In the living room, this combination can create cozy accent lighting. High IP-rated products are perfect for bathrooms, and in retail, LED strips with aluminum profiles are ideal for highlighting products! Trust your lighting project to the experienced team of LED House - [let's bring your vision to life!](#)



## Aluminium profile LUMINES SOLIS 2m silvery

**Product code 14538**

Brand [LUMINES](#)

Height 9.3mm

Width 43.0mm

Length 2020.0mm

Casing colour silvery

Casing material aluminum

A surface-mounted aluminum profile is a practical method for installing an LED strip effectively. With an aluminum profile, there is no risk of the LED strip shifting out of place, and the profile cover maintains uniform and cozy light distribution. The profile is durable yet lightweight, ensuring a long lifespan and stability. Installing a surface-mounted aluminum profile is very easy. An aluminum profile is ideal for use in many different rooms. In the kitchen, a high-power LED strip with an aluminum profile works well above the work surface. In the living room, this combination can create cozy accent lighting. High IP-rated products are perfect for bathrooms, and in retail, LED strips with aluminum profiles are ideal for highlighting products! Trust your lighting project to the experienced team of LED House - [let's bring your vision to life!](#)



## Aluminium profile LUMINES SOLIS 2m white

**Product code 17907**

Brand [LUMINES](#)  
 Height 9.3mm  
 Width 43.0mm  
 Length 2020.0mm  
 Casing colour white  
 Casing material aluminum

A surface-mounted aluminum profile is a practical method for installing an LED strip effectively. With an aluminum profile, there is no risk of the LED strip shifting out of place, and the profile cover maintains uniform and cozy light distribution. The profile is durable yet lightweight, ensuring a long lifespan and stability. Installing a surface-mounted aluminum profile is very easy. An aluminum profile is ideal for use in many different rooms. In the kitchen, a high-power LED strip with an aluminum profile works well above the work surface. In the living room, this combination can create cozy accent lighting. High IP-rated products are perfect for bathrooms, and in retail, LED strips with aluminum profiles are ideal for highlighting products! Trust your lighting project to the experienced team of LED House - [let's bring your vision to life!](#)



## Aluminium profile LUMINES Sparo 2m silvery

**Product code 15517**

Brand [LUMINES](#)  
 Casing colour silvery  
 Casing material aluminum

Logi LED profile wall mount.



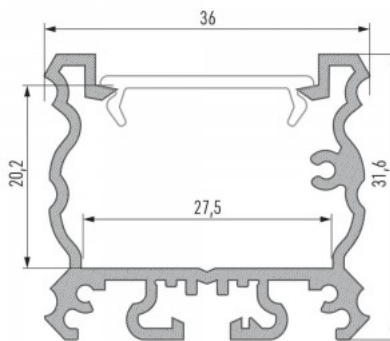


## Aluminium profile LUMINES TALIA 2m black

**Product code 16216**

Brand [LUMINES](#)  
 Height 31.6mm  
 Width 36.0mm  
 Length 2000.0mm  
 Casing colour black  
 Casing material aluminum

A surface-mounted aluminum profile is a practical method for installing an LED strip effectively. With an aluminum profile, there is no risk of the LED strip shifting out of place, and the profile cover maintains uniform and cozy light distribution. The profile is durable yet lightweight, ensuring a long lifespan and stability. Installing a surface-mounted aluminum profile is very easy. An aluminum profile is ideal for use in many different rooms. In the kitchen, a high-power LED strip with an aluminum profile works well above the work surface. In the living room, this combination can create cozy accent lighting. High IP-rated products are perfect for bathrooms, and in retail, LED strips with aluminum profiles are ideal for highlighting products! Trust your lighting project to the experienced team of LED House - [let's bring your vision to life!](#)

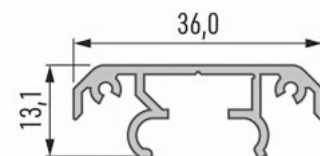


## Aluminium profile LUMINES TALIA M1 2m black

**Product code 17455**

Brand [LUMINES](#)  
 Height 13.1mm  
 Width 36.0mm  
 Length 2020.0mm  
 Casing colour black  
 Casing material aluminum

Aluminumprofile.



## Aluminium profile LUMINES TOPO 2m white

**Product code 17199**

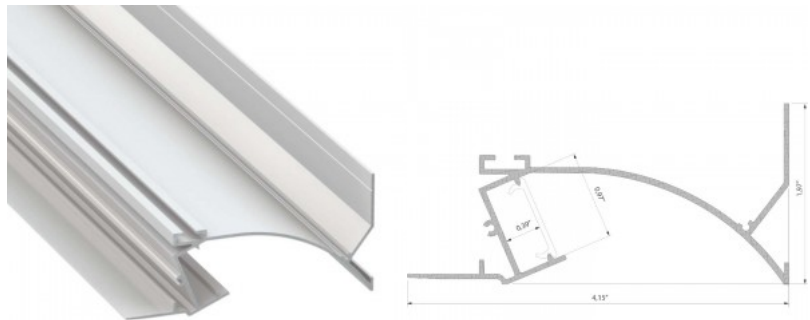
Brand [LUMINES](#)

Length 2000.0mm

Casing colour white

Casing material aluminum

A surface-mounted aluminum profile is a practical method for installing an LED strip effectively. With an aluminum profile, there is no risk of the LED strip shifting out of place, and the profile cover maintains uniform and cozy light distribution. The profile is durable yet lightweight, ensuring a long lifespan and stability. Installing a surface-mounted aluminum profile is very easy. An aluminum profile is ideal for use in many different rooms. In the kitchen, a high-power LED strip with an aluminum profile works well above the work surface. In the living room, this combination can create cozy accent lighting. High IP-rated products are perfect for bathrooms, and in retail, LED strips with aluminum profiles are ideal for highlighting products! Trust your lighting project to the experienced team of LED House - [let's bring your vision to life!](#)

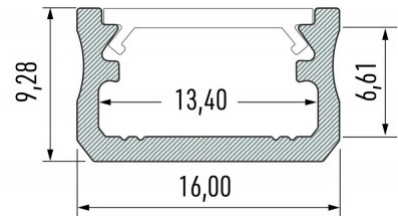


## Aluminium profile LUMINES Type A 2m black

**Product code 14645**

Brand [LUMINES](#)  
 Height 9.3mm  
 Width 16.0mm  
 Length 2020.0mm  
 Casing colour black  
 Casing material aluminum  
 Polishing matt

A surface-mounted aluminum profile is a practical method for installing an LED strip effectively. With an aluminum profile, there is no risk of the LED strip shifting out of place, and the profile cover maintains uniform and cozy light distribution. The profile is durable yet lightweight, ensuring a long lifespan and stability. Installing a surface-mounted aluminum profile is very easy. An aluminum profile is ideal for use in many different rooms. In the kitchen, a high-power LED strip with an aluminum profile works well above the work surface. In the living room, this combination can create cozy accent lighting. High IP-rated products are perfect for bathrooms, and in retail, LED strips with aluminum profiles are ideal for highlighting products! Trust your lighting project to the experienced team of LED House - [let's bring your vision to life!](#)



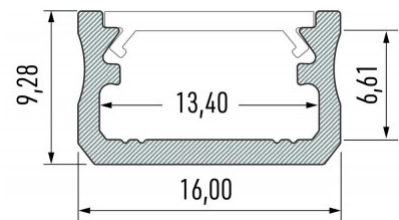
## Aluminium profile LUMINES Type A 2m inox

**Product code 14941**

Brand [LUMINES](#)

Casing colour inox

A surface-mounted aluminum profile is a practical method for installing an LED strip effectively. With an aluminum profile, there is no risk of the LED strip shifting out of place, and the profile cover maintains uniform and cozy light distribution. The profile is durable yet lightweight, ensuring a long lifespan and stability. Installing a surface-mounted aluminum profile is very easy. An aluminum profile is ideal for use in many different rooms. In the kitchen, a high-power LED strip with an aluminum profile works well above the work surface. In the living room, this combination can create cozy accent lighting. High IP-rated products are perfect for bathrooms, and in retail, LED strips with aluminum profiles are ideal for highlighting products! Trust your lighting project to the experienced team of LED House - [let's bring your vision to life!](#)



## Aluminium profile LUMINES Type A 2m silvery

**Product code 14284**

Brand [LUMINES](#)

Height 9.3mm

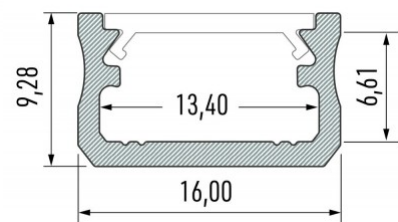
Width 16.0mm

Casing colour silvery

Casing material aluminum

Polishing matt

A surface-mounted aluminum profile is a practical method for installing an LED strip effectively. With an aluminum profile, there is no risk of the LED strip shifting out of place, and the profile cover maintains uniform and cozy light distribution. The profile is durable yet lightweight, ensuring a long lifespan and stability. Installing a surface-mounted aluminum profile is very easy. An aluminum profile is ideal for use in many different rooms. In the kitchen, a high-power LED strip with an aluminum profile works well above the work surface. In the living room, this combination can create cozy accent lighting. High IP-rated products are perfect for bathrooms, and in retail, LED strips with aluminum profiles are ideal for highlighting products! Trust your lighting project to the experienced team of LED House - [let's bring your vision to life!](#)



## Aluminium profile LUMINES Type A 2m white

**Product code 14646**

Brand [LUMINES](#)

Height 9.3mm

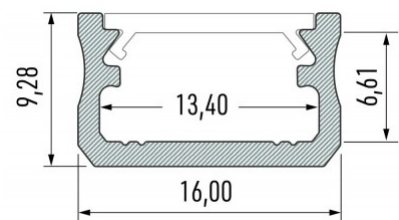
Width 16.0mm

Casing colour white

Casing material aluminum

Polishing matt

A surface-mounted aluminum profile is a practical method for installing an LED strip effectively. With an aluminum profile, there is no risk of the LED strip shifting out of place, and the profile cover maintains uniform and cozy light distribution. The profile is durable yet lightweight, ensuring a long lifespan and stability. Installing a surface-mounted aluminum profile is very easy. An aluminum profile is ideal for use in many different rooms. In the kitchen, a high-power LED strip with an aluminum profile works well above the work surface. In the living room, this combination can create cozy accent lighting. High IP-rated products are perfect for bathrooms, and in retail, LED strips with aluminum profiles are ideal for highlighting products! Trust your lighting project to the experienced team of LED House - [let's bring your vision to life!](#)

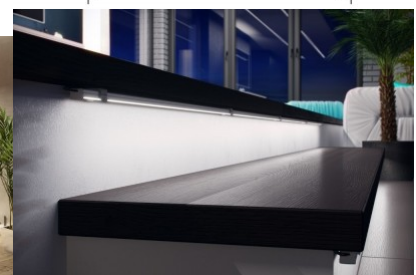
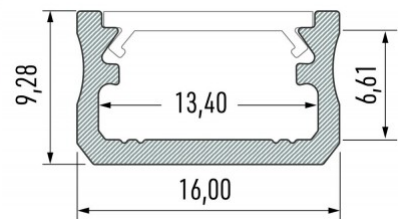


## Aluminium profile LUMINES Type A 3m black

**Product code 16424**

Brand [LUMINES](#)  
 Height 9.3mm  
 Width 16.0mm  
 Length 3000.0mm  
 Casing colour black  
 Casing material aluminum  
 Polishing matt

A surface-mounted aluminum profile is a practical method for installing an LED strip effectively. With an aluminum profile, there is no risk of the LED strip shifting out of place, and the profile cover maintains uniform and cozy light distribution. The profile is durable yet lightweight, ensuring a long lifespan and stability. Installing a surface-mounted aluminum profile is very easy. An aluminum profile is ideal for use in many different rooms. In the kitchen, a high-power LED strip with an aluminum profile works well above the work surface. In the living room, this combination can create cozy accent lighting. High IP-rated products are perfect for bathrooms, and in retail, LED strips with aluminum profiles are ideal for highlighting products! Trust your lighting project to the experienced team of LED House - [let's bring your vision to life!](#)

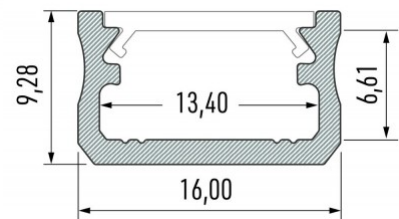


## Aluminium profile LUMINES Type A 3m silvery

**Product code 15481**

Brand [LUMINES](#)  
 Height 9.3mm  
 Width 16.0mm  
 Length 3000.0mm  
 Casing colour silvery  
 Casing material aluminum  
 Polishing matt

A surface-mounted aluminum profile is a practical method for installing an LED strip effectively. With an aluminum profile, there is no risk of the LED strip shifting out of place, and the profile cover maintains uniform and cozy light distribution. The profile is durable yet lightweight, ensuring a long lifespan and stability. Installing a surface-mounted aluminum profile is very easy. An aluminum profile is ideal for use in many different rooms. In the kitchen, a high-power LED strip with an aluminum profile works well above the work surface. In the living room, this combination can create cozy accent lighting. High IP-rated products are perfect for bathrooms, and in retail, LED strips with aluminum profiles are ideal for highlighting products! Trust your lighting project to the experienced team of LED House - [let's bring your vision to life!](#)



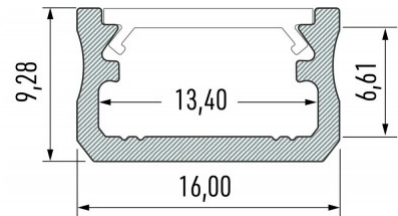


## Aluminium profile LUMINES Type A 3m white

**Product code 14655**

Brand [LUMINES](#)  
 Height 9.3mm  
 Width 16.0mm  
 Length 3000.0mm  
 Casing colour white  
 Casing material aluminum  
 Polishing matt

A surface-mounted aluminum profile is a practical method for installing an LED strip effectively. With an aluminum profile, there is no risk of the LED strip shifting out of place, and the profile cover maintains uniform and cozy light distribution. The profile is durable yet lightweight, ensuring a long lifespan and stability. Installing a surface-mounted aluminum profile is very easy. An aluminum profile is ideal for use in many different rooms. In the kitchen, a high-power LED strip with an aluminum profile works well above the work surface. In the living room, this combination can create cozy accent lighting. High IP-rated products are perfect for bathrooms, and in retail, LED strips with aluminum profiles are ideal for highlighting products! Trust your lighting project to the experienced team of LED House - [let's bring your vision to life!](#)

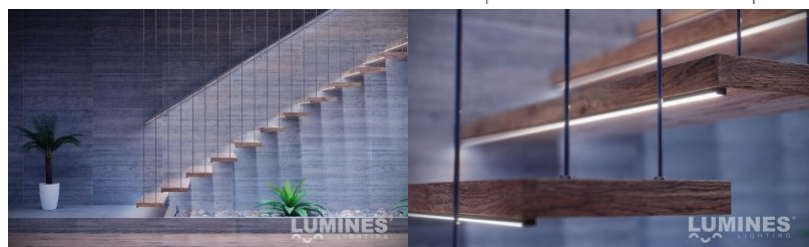
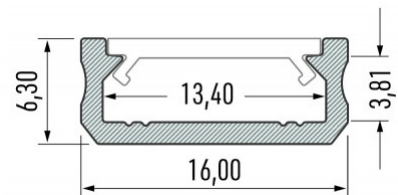
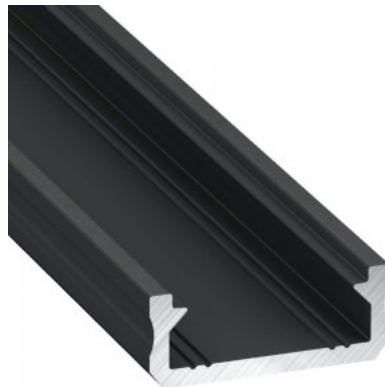


## Aluminium profile LUMINES Type D 2m black

**Product code 14905**

Brand [LUMINES](#)  
 Height 6.3mm  
 Width 16.0mm  
 Length 2020.0mm  
 Casing colour black  
 Casing material aluminum

A surface-mounted aluminum profile is a practical method for installing an LED strip effectively. With an aluminum profile, there is no risk of the LED strip shifting out of place, and the profile cover maintains uniform and cozy light distribution. The profile is durable yet lightweight, ensuring a long lifespan and stability. Installing a surface-mounted aluminum profile is very easy. An aluminum profile is ideal for use in many different rooms. In the kitchen, a high-power LED strip with an aluminum profile works well above the work surface. In the living room, this combination can create cozy accent lighting. High IP-rated products are perfect for bathrooms, and in retail, LED strips with aluminum profiles are ideal for highlighting products! Trust your lighting project to the experienced team of LED House - [let's bring your vision to life!](#)

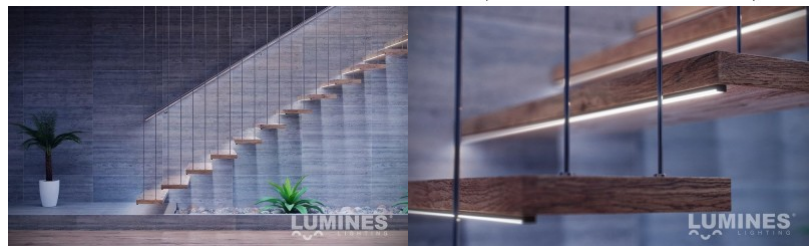
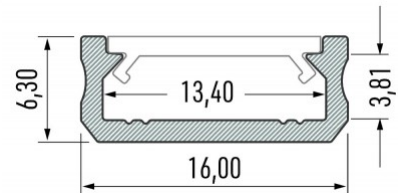
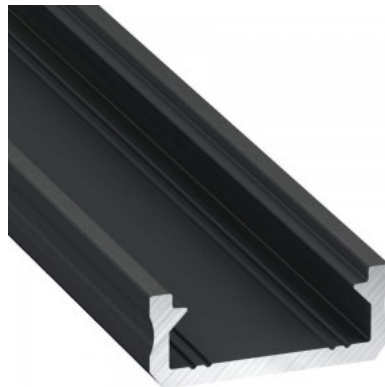


## Aluminium profile LUMINES Type D 3m black

**Product code 15761**

Brand [LUMINES](#)  
 Height 6.3mm  
 Width 16.0mm  
 Length 3000.0mm  
 Casing colour black  
 Casing material aluminum

A surface-mounted aluminum profile is a practical method for installing an LED strip effectively. With an aluminum profile, there is no risk of the LED strip shifting out of place, and the profile cover maintains uniform and cozy light distribution. The profile is durable yet lightweight, ensuring a long lifespan and stability. Installing a surface-mounted aluminum profile is very easy. An aluminum profile is ideal for use in many different rooms. In the kitchen, a high-power LED strip with an aluminum profile works well above the work surface. In the living room, this combination can create cozy accent lighting. High IP-rated products are perfect for bathrooms, and in retail, LED strips with aluminum profiles are ideal for highlighting products! Trust your lighting project to the experienced team of LED House - [let's bring your vision to life!](#)

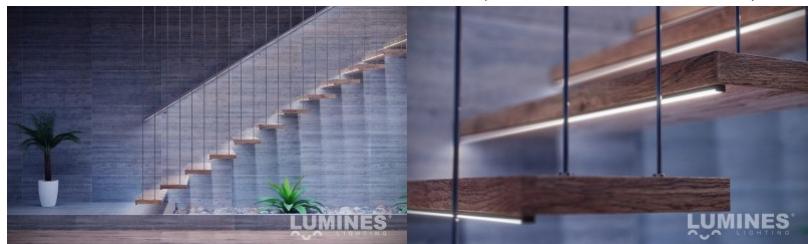
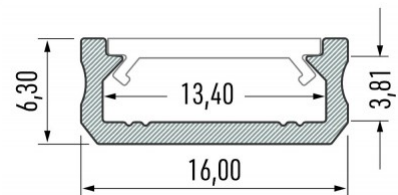


## Aluminium profile LUMINES Type D 2m silvery

**Product code 14532**

Brand [LUMINES](#)  
 Height 6.3mm  
 Width 16.0mm  
 Length 2020.0mm  
 Casing colour silvery  
 Casing material aluminum

A surface-mounted aluminum profile is a practical method for installing an LED strip effectively. With an aluminum profile, there is no risk of the LED strip shifting out of place, and the profile cover maintains uniform and cozy light distribution. The profile is durable yet lightweight, ensuring a long lifespan and stability. Installing a surface-mounted aluminum profile is very easy. An aluminum profile is ideal for use in many different rooms. In the kitchen, a high-power LED strip with an aluminum profile works well above the work surface. In the living room, this combination can create cozy accent lighting. High IP-rated products are perfect for bathrooms, and in retail, LED strips with aluminum profiles are ideal for highlighting products! Trust your lighting project to the experienced team of LED House - [let's bring your vision to life!](#)

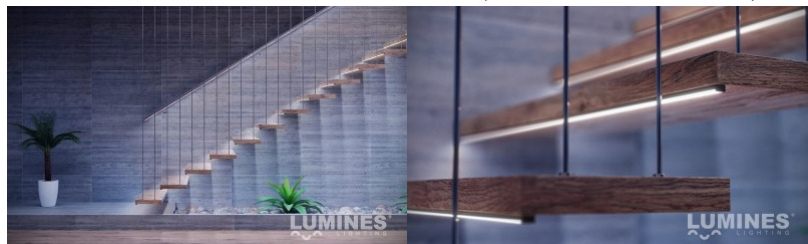
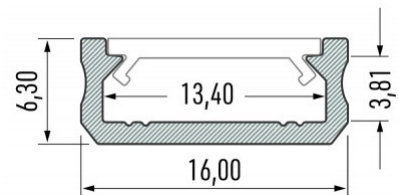


## Aluminium profile LUMINES Type D 2m white

**Product code 14902**

Brand [LUMINES](#)  
 Height 6.3mm  
 Width 16.0mm  
 Length 2020.0mm  
 Casing colour white  
 Casing material aluminum

A surface-mounted aluminum profile is a practical method for installing an LED strip effectively. With an aluminum profile, there is no risk of the LED strip shifting out of place, and the profile cover maintains uniform and cozy light distribution. The profile is durable yet lightweight, ensuring a long lifespan and stability. Installing a surface-mounted aluminum profile is very easy. An aluminum profile is ideal for use in many different rooms. In the kitchen, a high-power LED strip with an aluminum profile works well above the work surface. In the living room, this combination can create cozy accent lighting. High IP-rated products are perfect for bathrooms, and in retail, LED strips with aluminum profiles are ideal for highlighting products! Trust your lighting project to the experienced team of LED House - [let's bring your vision to life!](#)

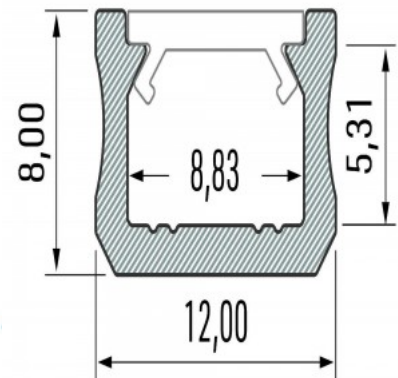


## Aluminium profile LUMINES Type X 2m black

**Product code 16476**

Brand [LUMINES](#)  
 Height 9.3mm  
 Width 12.0mm  
 Casing colour black  
 Casing material aluminum  
 Polishing matt

A surface-mounted aluminum profile is a practical method for installing an LED strip effectively. With an aluminum profile, there is no risk of the LED strip shifting out of place, and the profile cover maintains uniform and cozy light distribution. The profile is durable yet lightweight, ensuring a long lifespan and stability. Installing a surface-mounted aluminum profile is very easy. An aluminum profile is ideal for use in many different rooms. In the kitchen, a high-power LED strip with an aluminum profile works well above the work surface. In the living room, this combination can create cozy accent lighting. High IP-rated products are perfect for bathrooms, and in retail, LED strips with aluminum profiles are ideal for highlighting products! Trust your lighting project to the experienced team of LED House - [let's bring your vision to life!](#)



## Aluminium profile LUMINES Type X 2m silvery

**Product code 15525**

Brand [LUMINES](#)

Height 9.3mm

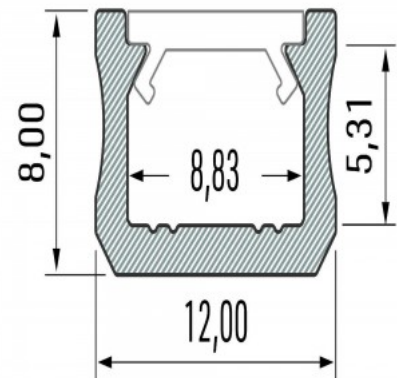
Width 12.0mm

Casing colour silvery

Casing material aluminum

Polishing matt

A surface-mounted aluminum profile is a practical method for installing an LED strip effectively. With an aluminum profile, there is no risk of the LED strip shifting out of place, and the profile cover maintains uniform and cozy light distribution. The profile is durable yet lightweight, ensuring a long lifespan and stability. Installing a surface-mounted aluminum profile is very easy. An aluminum profile is ideal for use in many different rooms. In the kitchen, a high-power LED strip with an aluminum profile works well above the work surface. In the living room, this combination can create cozy accent lighting. High IP-rated products are perfect for bathrooms, and in retail, LED strips with aluminum profiles are ideal for highlighting products! Trust your lighting project to the experienced team of LED House - [let's bring your vision to life!](#)

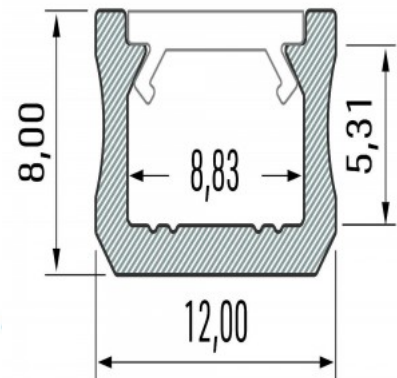


## Aluminium profile LUMINES Type X 3m black

**Product code 17767**

Brand [LUMINES](#)  
 Height 9.3mm  
 Width 12.0mm  
 Casing colour black  
 Casing material aluminum  
 Polishing matt

A surface-mounted aluminum profile is a practical method for installing an LED strip effectively. With an aluminum profile, there is no risk of the LED strip shifting out of place, and the profile cover maintains uniform and cozy light distribution. The profile is durable yet lightweight, ensuring a long lifespan and stability. Installing a surface-mounted aluminum profile is very easy. An aluminum profile is ideal for use in many different rooms. In the kitchen, a high-power LED strip with an aluminum profile works well above the work surface. In the living room, this combination can create cozy accent lighting. High IP-rated products are perfect for bathrooms, and in retail, LED strips with aluminum profiles are ideal for highlighting products! Trust your lighting project to the experienced team of LED House - [let's bring your vision to life!](#)



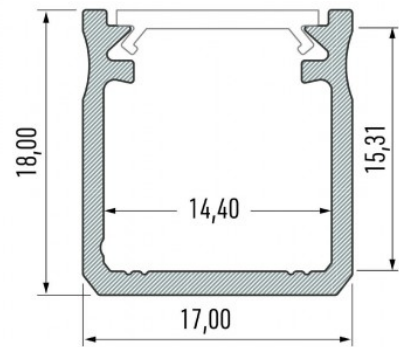


## Aluminium profile LUMINES Type Y 2m black

**Product code 15122**

Brand [LUMINES](#)  
 Height 18.0mm  
 Width 17.0mm  
 Casing colour black  
 Casing material aluminum

A surface-mounted aluminum profile is a practical method for installing an LED strip effectively. With an aluminum profile, there is no risk of the LED strip shifting out of place, and the profile cover maintains uniform and cozy light distribution. The profile is durable yet lightweight, ensuring a long lifespan and stability. Installing a surface-mounted aluminum profile is very easy. An aluminum profile is ideal for use in many different rooms. In the kitchen, a high-power LED strip with an aluminum profile works well above the work surface. In the living room, this combination can create cozy accent lighting. High IP-rated products are perfect for bathrooms, and in retail, LED strips with aluminum profiles are ideal for highlighting products! Trust your lighting project to the experienced team of LED House - [let's bring your vision to life!](#)

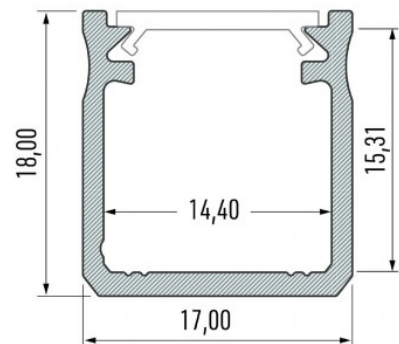


## Aluminium profile LUMINES Type Y 2m silvery

**Product code 14536**

Brand [LUMINES](#)  
 Height 18.0mm  
 Width 17.0mm  
 Length 2020.0mm  
 Casing colour silvery  
 Casing material aluminum

A surface-mounted aluminum profile is a practical method for installing an LED strip effectively. With an aluminum profile, there is no risk of the LED strip shifting out of place, and the profile cover maintains uniform and cozy light distribution. The profile is durable yet lightweight, ensuring a long lifespan and stability. Installing a surface-mounted aluminum profile is very easy. An aluminum profile is ideal for use in many different rooms. In the kitchen, a high-power LED strip with an aluminum profile works well above the work surface. In the living room, this combination can create cozy accent lighting. High IP-rated products are perfect for bathrooms, and in retail, LED strips with aluminum profiles are ideal for highlighting products! Trust your lighting project to the experienced team of LED House - [let's bring your vision to life!](#)



## Aluminium profile LUMINES Type Y 2m white

**Product code 15269**

Brand [LUMINES](#)

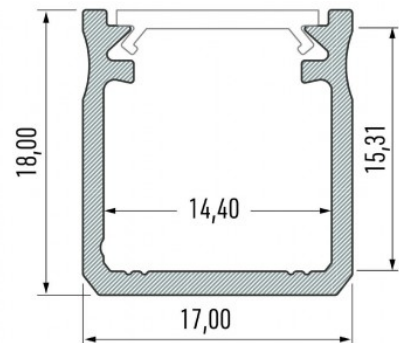
Height 18.0mm

Width 17.0mm

Casing colour white

Casing material aluminum

A surface-mounted aluminum profile is a practical method for installing an LED strip effectively. With an aluminum profile, there is no risk of the LED strip shifting out of place, and the profile cover maintains uniform and cozy light distribution. The profile is durable yet lightweight, ensuring a long lifespan and stability. Installing a surface-mounted aluminum profile is very easy. An aluminum profile is ideal for use in many different rooms. In the kitchen, a high-power LED strip with an aluminum profile works well above the work surface. In the living room, this combination can create cozy accent lighting. High IP-rated products are perfect for bathrooms, and in retail, LED strips with aluminum profiles are ideal for highlighting products! Trust your lighting project to the experienced team of LED House - [let's bring your vision to life!](#)

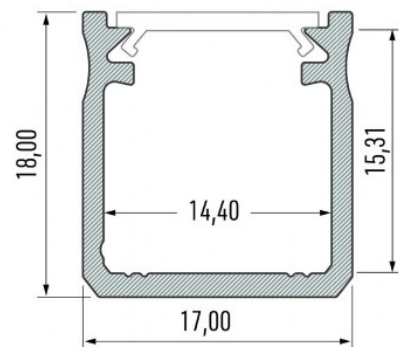


## Aluminium profile LUMINES Type Y 3m black

**Product code 15372**

Brand [LUMINES](#)  
 Height 18.0mm  
 Width 17.0mm  
 Casing colour black  
 Casing material aluminum

A surface-mounted aluminum profile is a practical method for installing an LED strip effectively. With an aluminum profile, there is no risk of the LED strip shifting out of place, and the profile cover maintains uniform and cozy light distribution. The profile is durable yet lightweight, ensuring a long lifespan and stability. Installing a surface-mounted aluminum profile is very easy. An aluminum profile is ideal for use in many different rooms. In the kitchen, a high-power LED strip with an aluminum profile works well above the work surface. In the living room, this combination can create cozy accent lighting. High IP-rated products are perfect for bathrooms, and in retail, LED strips with aluminum profiles are ideal for highlighting products! Trust your lighting project to the experienced team of LED House - [let's bring your vision to life!](#)

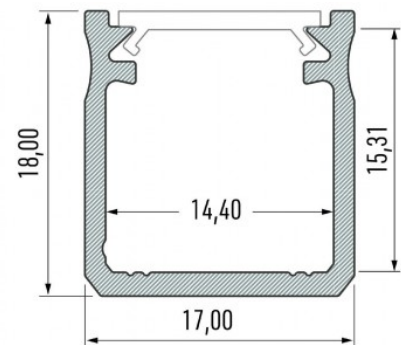


## Aluminium profile LUMINES Type Y 3m white

**Product code 15371**

Brand [LUMINES](#)  
 Height 18.0mm  
 Width 17.0mm  
 Length 3000.0mm  
 Casing colour white  
 Casing material aluminum

A surface-mounted aluminum profile is a practical method for installing an LED strip effectively. With an aluminum profile, there is no risk of the LED strip shifting out of place, and the profile cover maintains uniform and cozy light distribution. The profile is durable yet lightweight, ensuring a long lifespan and stability. Installing a surface-mounted aluminum profile is very easy. An aluminum profile is ideal for use in many different rooms. In the kitchen, a high-power LED strip with an aluminum profile works well above the work surface. In the living room, this combination can create cozy accent lighting. High IP-rated products are perfect for bathrooms, and in retail, LED strips with aluminum profiles are ideal for highlighting products! Trust your lighting project to the experienced team of LED House - [let's bring your vision to life!](#)

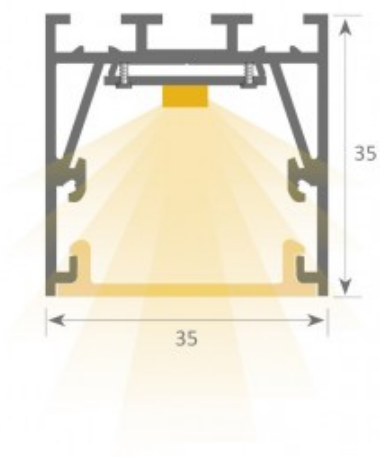


## Aluminium profile LUZ NEGRA ARIZONA 2,5m silvery

**Product code 15085**

Brand [LUZ NEGRA](#)  
 Height 35.0mm  
 Width 35.0mm  
 Length 2500.0mm  
 Casing colour silvery  
 Casing material aluminum  
 Polishing matt

A surface-mounted aluminum profile is a practical method for installing an LED strip effectively. With an aluminum profile, there is no risk of the LED strip shifting out of place, and the profile cover maintains uniform and cozy light distribution. The profile is durable yet lightweight, ensuring a long lifespan and stability. Installing a surface-mounted aluminum profile is very easy. An aluminum profile is ideal for use in many different rooms. In the kitchen, a high-power LED strip with an aluminum profile works well above the work surface. In the living room, this combination can create cozy accent lighting. High IP-rated products are perfect for bathrooms, and in retail, LED strips with aluminum profiles are ideal for highlighting products! Trust your lighting project to the experienced team of LED House - [let's bring your vision to life!](#)



## Aluminium profile LUZ NEGRA Berna 2m white

**Product code 15144**

Brand [LUZ NEGRA](#)  
 Height 5.6mm  
 Width 40.0mm  
 Length 2000.0mm  
 Casing colour white  
 Casing material aluminum  
 Polishing matt

A surface-mounted aluminum profile is a practical method for installing an LED strip effectively. With an aluminum profile, there is no risk of the LED strip shifting out of place, and the profile cover maintains uniform and cozy light distribution. The profile is durable yet lightweight, ensuring a long lifespan and stability. Installing a surface-mounted aluminum profile is very easy. An aluminum profile is ideal for use in many different rooms. In the kitchen, a high-power LED strip with an aluminum profile works well above the work surface. In the living room, this combination can create cozy accent lighting. High IP-rated products are perfect for bathrooms, and in retail, LED strips with aluminum profiles are ideal for highlighting products! Trust your lighting project to the experienced team of LED House - [let's bring your vision to life!](#)



## Aluminium profile LUZ NEGRA California XL 3m silvery

### Product code 16121

Brand [LUZ NEGRA](#)  
 Height 9.8mm  
 Width 23.5mm  
 Length 3000.0mm  
 Casing colour silvery  
 Casing material aluminum  
 Polishing matt

A surface-mounted aluminum profile is a practical method for installing an LED strip effectively. With an aluminum profile, there is no risk of the LED strip shifting out of place, and the profile cover maintains uniform and cozy light distribution. The profile is durable yet lightweight, ensuring a long lifespan and stability. Installing a surface-mounted aluminum profile is very easy. An aluminum profile is ideal for use in many different rooms. In the kitchen, a high-power LED strip with an aluminum profile works well above the work surface. In the living room, this combination can create cozy accent lighting. High IP-rated products are perfect for bathrooms, and in retail, LED strips with aluminum profiles are ideal for highlighting products! Trust your lighting project to the experienced team of LED House - [let's bring your vision to life!](#)



Scale 1:2



Scale 1:1



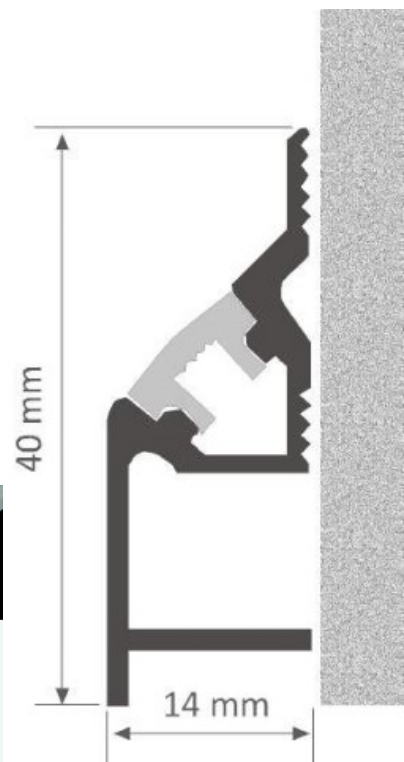
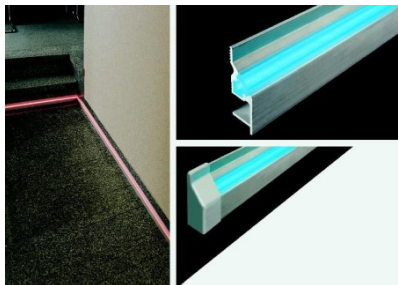


## Aluminium profile LUZ NEGRA Cambridge 2,4m silvery

**Product code 13347**

Brand [LUZ NEGRA](#)  
 Height 40.0mm  
 Width 14.0mm  
 Length 2400.0mm  
 Casing colour silvery  
 Casing material aluminum  
 Polishing matt

A surface-mounted aluminum profile is a practical method for installing an LED strip effectively. With an aluminum profile, there is no risk of the LED strip shifting out of place, and the profile cover maintains uniform and cozy light distribution. The profile is durable yet lightweight, ensuring a long lifespan and stability. Installing a surface-mounted aluminum profile is very easy. An aluminum profile is ideal for use in many different rooms. In the kitchen, a high-power LED strip with an aluminum profile works well above the work surface. In the living room, this combination can create cozy accent lighting. High IP-rated products are perfect for bathrooms, and in retail, LED strips with aluminum profiles are ideal for highlighting products! Trust your lighting project to the experienced team of LED House - [let's bring your vision to life!](#)



## Aluminium profile LUZ NEGRA Colonia 3m silvery

**Product code 13564**

Brand [LUZ NEGRA](#)

Height 14.0mm

Width 40.0mm

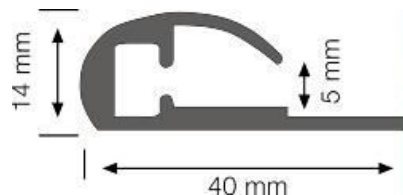
Length 3000.0mm

Casing colour silvery

Casing material aluminum

Polishing matt

A surface-mounted aluminum profile is a practical method for installing an LED strip effectively. With an aluminum profile, there is no risk of the LED strip shifting out of place, and the profile cover maintains uniform and cozy light distribution. The profile is durable yet lightweight, ensuring a long lifespan and stability. Installing a surface-mounted aluminum profile is very easy. An aluminum profile is ideal for use in many different rooms. In the kitchen, a high-power LED strip with an aluminum profile works well above the work surface. In the living room, this combination can create cozy accent lighting. High IP-rated products are perfect for bathrooms, and in retail, LED strips with aluminum profiles are ideal for highlighting products! Trust your lighting project to the experienced team of LED House - [let's bring your vision to life!](#)

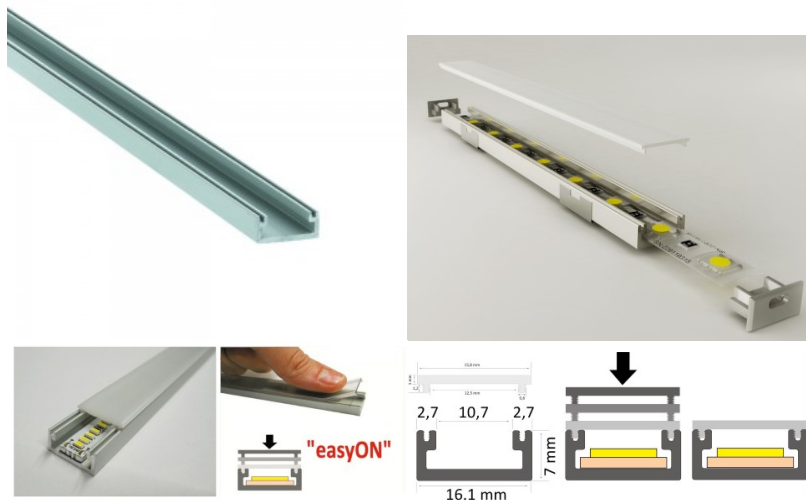


## Aluminium profile LUZ NEGRA Milano 2m silvery

**Product code 13338**

Brand [LUZ NEGRA](#)  
 Height 7.0mm  
 Width 16.0mm  
 Length 2000.0mm  
 Casing colour silvery  
 Casing material aluminum  
 Polishing matt

A surface-mounted aluminum profile is a practical method for installing an LED strip effectively. With an aluminum profile, there is no risk of the LED strip shifting out of place, and the profile cover maintains uniform and cozy light distribution. The profile is durable yet lightweight, ensuring a long lifespan and stability. Installing a surface-mounted aluminum profile is very easy. An aluminum profile is ideal for use in many different rooms. In the kitchen, a high-power LED strip with an aluminum profile works well above the work surface. In the living room, this combination can create cozy accent lighting. High IP-rated products are perfect for bathrooms, and in retail, LED strips with aluminum profiles are ideal for highlighting products! Trust your lighting project to the experienced team of LED House - [let's bring your vision to life!](#)



## Aluminium profile LUZ NEGRA MUNICH 2m black

**Product code 16139**

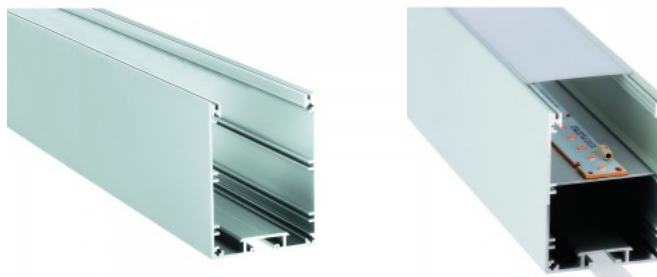
Brand [LUZ NEGRA](#)

Height 78.0mm

Width 58.0mm

Length 2000.0mm

Casing colour black



Aluminum profile is a practical method for installing an LED strip effectively. With an aluminum profile, there is no risk of the LED strip shifting out of place, and the profile cover maintains uniform and cozy light distribution. The profile is durable yet lightweight, ensuring a long lifespan and stability. Installing a surface-mounted aluminum profile is very easy. An aluminum profile is ideal for use in many different rooms. In the kitchen, a high-power LED strip with an aluminum profile works well above the work surface. In the living room, this combination can create cozy accent lighting. High IP-rated products are perfect for bathrooms, and in retail, LED strips with aluminum profiles are ideal for highlighting products! Trust your lighting project to the experienced team of LED House - [let's bring your vision to life!](#)

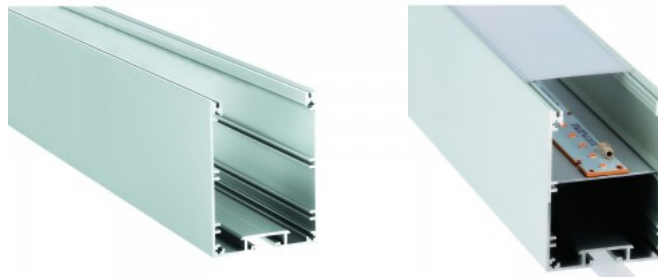


## Aluminium profile LUZ NEGRA MUNICH 2m silvery

**Product code 15081**

Brand [LUZ NEGRA](#)  
Height 78.0mm  
Width 58.0mm  
Length 2000.0mm  
Casing colour silvery

Aluminum profile is a practical method for installing an LED strip effectively. With an aluminum profile, there is no risk of the LED strip shifting out of place, and the profile cover maintains uniform and cozy light distribution. The profile is durable yet lightweight, ensuring a long lifespan and stability. Installing a surface-mounted aluminum profile is very easy. An aluminum profile is ideal for use in many different rooms. In the kitchen, a high-power LED strip with an aluminum profile works well above the work surface. In the living room, this combination can create cozy accent lighting. High IP-rated products are perfect for bathrooms, and in retail, LED strips with aluminum profiles are ideal for highlighting products! Trust your lighting project to the experienced team of LED House - [let's bring your vision to life!](#)



## Aluminium profile LUZ NEGRA munich slim 2m silvery

### Product code 15007

---

Brand [LUZ NEGRA](#)

Height 70.0mm

Width 38.0mm

Length 2000.0mm

Casing colour silvery

Aluminum profile is a practical method for installing an LED strip effectively. With an aluminum profile, there is no risk of the LED strip shifting out of place, and the profile cover maintains uniform and cozy light distribution. The profile is durable yet lightweight, ensuring a long lifespan and stability. Installing a surface-mounted aluminum profile is very easy. An aluminum profile is ideal for use in many different rooms. In the kitchen, a high-power LED strip with an aluminum profile works well above the work surface. In the living room, this combination can create cozy accent lighting. High IP-rated products are perfect for bathrooms, and in retail, LED strips with aluminum profiles are ideal for highlighting products! Trust your lighting project to the experienced team of LED House - [let's bring your vision to life!](#)



## Aluminium profile LUZ NEGRA Roma 2m silvery

**Product code 13337**

Brand [LUZ NEGRA](#)

Height 11.0mm

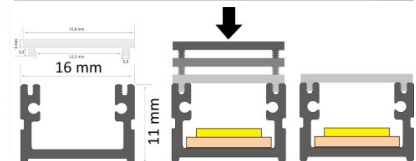
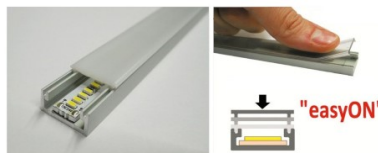
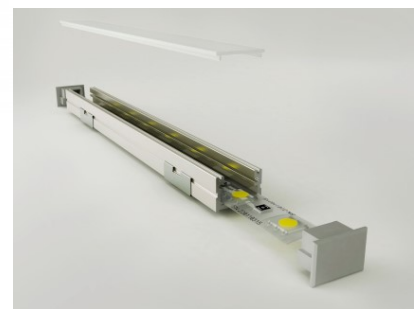
Width 16.0mm

Casing colour silvery

Casing material aluminum

Polishing matt

Aluminum profile is a practical method for installing an LED strip effectively. With an aluminum profile, there is no risk of the LED strip shifting out of place, and the profile cover maintains uniform and cozy light distribution. The profile is durable yet lightweight, ensuring a long lifespan and stability. Installing a surface-mounted aluminum profile is very easy. An aluminum profile is ideal for use in many different rooms. In the kitchen, a high-power LED strip with an aluminum profile works well above the work surface. In the living room, this combination can create cozy accent lighting. High IP-rated products are perfect for bathrooms, and in retail, LED strips with aluminum profiles are ideal for highlighting products! Trust your lighting project to the experienced team of LED House - [let's bring your vision to life!](#)

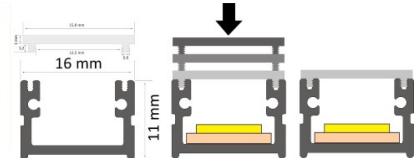
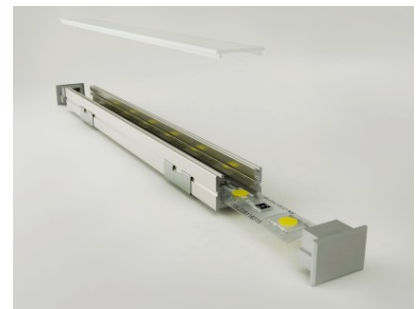


## Aluminium profile LUZ NEGRA Roma 3m silvery

**Product code 15390**

Brand [LUZ NEGRA](#)  
 Height 11.0mm  
 Width 16.0mm  
 Length 3000.0mm  
 Casing colour silvery  
 Casing material aluminum  
 Polishing matt

Aluminum profile is a practical method for installing an LED strip effectively. With an aluminum profile, there is no risk of the LED strip shifting out of place, and the profile cover maintains uniform and cozy light distribution. The profile is durable yet lightweight, ensuring a long lifespan and stability. Installing a surface-mounted aluminum profile is very easy. An aluminum profile is ideal for use in many different rooms. In the kitchen, a high-power LED strip with an aluminum profile works well above the work surface. In the living room, this combination can create cozy accent lighting. High IP-rated products are perfect for bathrooms, and in retail, LED strips with aluminum profiles are ideal for highlighting products! Trust your lighting project to the experienced team of LED House - [let's bring your vision to life!](#)



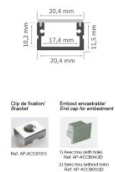
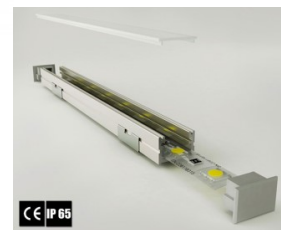


## Aluminium profile LUZ NEGRA Roma XL 2m silvery

**Product code 13514**

Brand [LUZ NEGRA](#)  
 Height 11.5mm  
 Width 20.4mm  
 Length 2000.0mm  
 Casing colour silvery  
 Casing material aluminum  
 Polishing matt

Aluminum profile is a practical method for installing an LED strip effectively. With an aluminum profile, there is no risk of the LED strip shifting out of place, and the profile cover maintains uniform and cozy light distribution. The profile is durable yet lightweight, ensuring a long lifespan and stability. Installing a surface-mounted aluminum profile is very easy. An aluminum profile is ideal for use in many different rooms. In the kitchen, a high-power LED strip with an aluminum profile works well above the work surface. In the living room, this combination can create cozy accent lighting. High IP-rated products are perfect for bathrooms, and in retail, LED strips with aluminum profiles are ideal for highlighting products! Trust your lighting project to the experienced team of LED House - [let's bring your vision to life!](#)



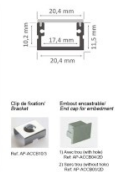
CE IP 65

## Aluminium profile LUZ NEGRA Roma XL 3m silvery

**Product code 15268**

Brand [LUZ NEGRA](#)  
 Height 11.5mm  
 Width 20.4mm  
 Length 3000.0mm  
 Casing colour silvery  
 Casing material aluminum  
 Polishing matt

A surface-mounted aluminum profile is a practical method for installing an LED strip effectively. With an aluminum profile, there is no risk of the LED strip shifting out of place, and the profile cover maintains uniform and cozy light distribution. The profile is durable yet lightweight, ensuring a long lifespan and stability. Installing a surface-mounted aluminum profile is very easy. An aluminum profile is ideal for use in many different rooms. In the kitchen, a high-power LED strip with an aluminum profile works well above the work surface. In the living room, this combination can create cozy accent lighting. High IP-rated products are perfect for bathrooms, and in retail, LED strips with aluminum profiles are ideal for highlighting products! Trust your lighting project to the experienced team of LED House - [let's bring your vision to life!](#)

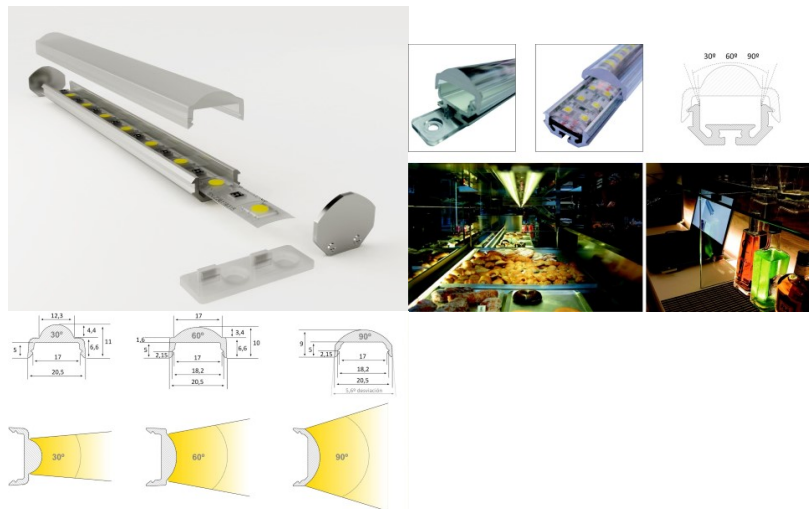


## Aluminium profile LUZ NEGRA Torino 2m silvery

**Product code 13344**

Brand [LUZ NEGRA](#)  
 Height 16.6mm  
 Width 18.0mm  
 Length 2000.0mm  
 Casing colour silvery  
 Casing material aluminum  
 Polishing matt

A surface-mounted aluminum profile is a practical method for installing an LED strip effectively. With an aluminum profile, there is no risk of the LED strip shifting out of place, and the profile cover maintains uniform and cozy light distribution. The profile is durable yet lightweight, ensuring a long lifespan and stability. Installing a surface-mounted aluminum profile is very easy. An aluminum profile is ideal for use in many different rooms. In the kitchen, a high-power LED strip with an aluminum profile works well above the work surface. In the living room, this combination can create cozy accent lighting. High IP-rated products are perfect for bathrooms, and in retail, LED strips with aluminum profiles are ideal for highlighting products! Trust your lighting project to the experienced team of LED House - [let's bring your vision to life!](#)

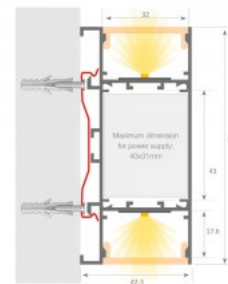


## Aluminium profile LUZ NEGRA Washington 3m black

**Product code 16725**

Brand [LUZ NEGRA](#)  
 Height 90.0mm  
 Width 42.3mm  
 Length 3000.0mm  
 Casing colour black  
 Casing material aluminum  
 Polishing matt

A surface-mounted aluminum profile is a practical method for installing an LED strip effectively. With an aluminum profile, there is no risk of the LED strip shifting out of place, and the profile cover maintains uniform and cozy light distribution. The profile is durable yet lightweight, ensuring a long lifespan and stability. Installing a surface-mounted aluminum profile is very easy. An aluminum profile is ideal for use in many different rooms. In the kitchen, a high-power LED strip with an aluminum profile works well above the work surface. In the living room, this combination can create cozy accent lighting. High IP-rated products are perfect for bathrooms, and in retail, LED strips with aluminum profiles are ideal for highlighting products! Trust your lighting project to the experienced team of LED House - [let's bring your vision to life!](#)

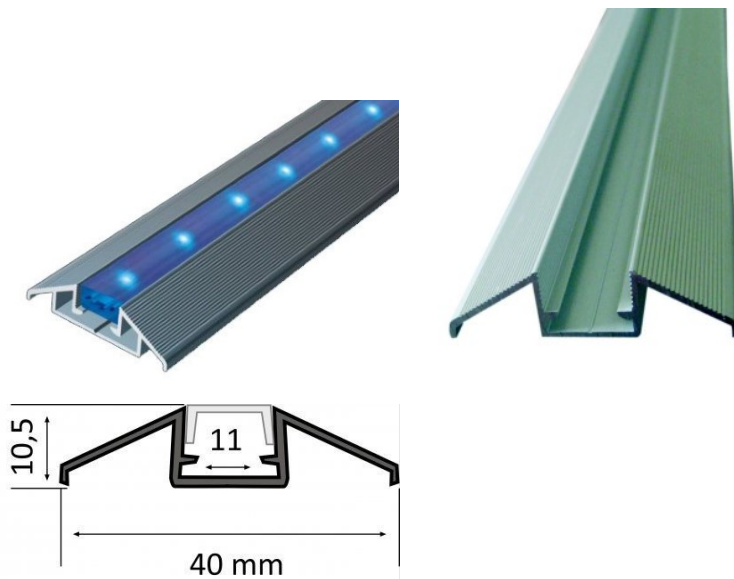


## Aluminium profile LUZ NEGRA Zurich 2,4m silvery

**Product code 13348**

Brand [LUZ NEGRA](#)  
 Height 10.5mm  
 Width 40.0mm  
 Length 2400.0mm  
 Casing colour silvery  
 Casing material aluminum  
 Polishing matt

A surface-mounted aluminum profile is a practical method for installing an LED strip effectively. With an aluminum profile, there is no risk of the LED strip shifting out of place, and the profile cover maintains uniform and cozy light distribution. The profile is durable yet lightweight, ensuring a long lifespan and stability. Installing a surface-mounted aluminum profile is very easy. An aluminum profile is ideal for use in many different rooms. In the kitchen, a high-power LED strip with an aluminum profile works well above the work surface. In the living room, this combination can create cozy accent lighting. High IP-rated products are perfect for bathrooms, and in retail, LED strips with aluminum profiles are ideal for highlighting products! Trust your lighting project to the experienced team of LED House - [let's bring your vision to life!](#)



## Aluminium profile TOPMET ARC12 CD/U5 2m silvery

**Product code 16252**

Brand [TOPMET](#)

Length 2000.0mm

Casing colour silvery

A surface-mounted aluminum profile is a practical method for installing an LED strip effectively. With an aluminum profile, there is no risk of the LED strip shifting out of place, and the profile cover maintains uniform and cozy light distribution. The profile is durable yet lightweight, ensuring a long lifespan and stability. Installing a surface-mounted aluminum profile is very easy. An aluminum profile is ideal for use in many different rooms. In the kitchen, a high-power LED strip with an aluminum profile works well above the work surface. In the living room, this combination can create cozy accent lighting. High IP-rated products are perfect for bathrooms, and in retail, LED strips with aluminum profiles are ideal for highlighting products! Trust your lighting project to the experienced team of LED House - [let's bring your vision to life!](#)



## Aluminium profile TOPMET ARC12 CD/U5 3m silvery

**Product code 17872**

Brand [TOPMET](#)

Width 20.0mm

Length 3000.0mm

Casing colour silvery

Casing material aluminum

A surface-mounted aluminum profile is a practical method for installing an LED strip effectively. With an aluminum profile, there is no risk of the LED strip shifting out of place, and the profile cover maintains uniform and cozy light distribution. The profile is durable yet lightweight, ensuring a long lifespan and stability. Installing a surface-mounted aluminum profile is very easy. An aluminum profile is ideal for use in many different rooms. In the kitchen, a high-power LED strip with an aluminum profile works well above the work surface. In the living room, this combination can create cozy accent lighting. High IP-rated products are perfect for bathrooms, and in retail, LED strips with aluminum profiles are ideal for highlighting products! Trust your lighting project to the experienced team of LED House - [let's bring your vision to life!](#)



## Aluminium profile TOPMET BACK10 A/UX 2m black

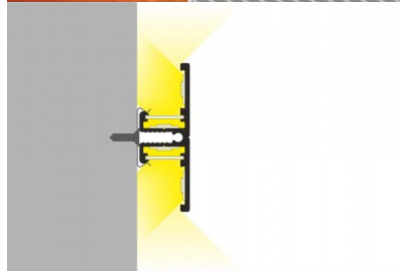
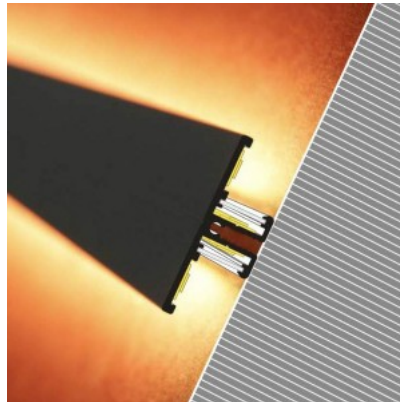
**Product code 15753**

Brand [TOPMET](#)

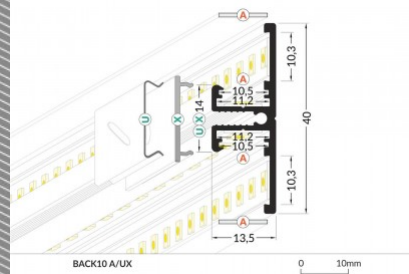
Casing colour black

Casing material aluminum

A surface-mounted aluminum profile is a practical method for installing an LED strip effectively. With an aluminum profile, there is no risk of the LED strip shifting out of place, and the profile cover maintains uniform and cozy light distribution. The profile is durable yet lightweight, ensuring a long lifespan and stability. Installing a surface-mounted aluminum profile is very easy. An aluminum profile is ideal for use in many different rooms. In the kitchen, a high-power LED strip with an aluminum profile works well above the work surface. In the living room, this combination can create cozy accent lighting. High IP-rated products are perfect for bathrooms, and in retail, LED strips with aluminum profiles are ideal for highlighting products! Trust your lighting project to the experienced team of LED House - [let's bring your vision to life!](#)



BACK10 A/UX



BACK10 A/UX

0 10mm



## Aluminium profile TOPMET BACK10 A/UX 2m silvery

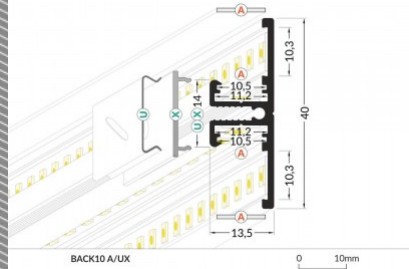
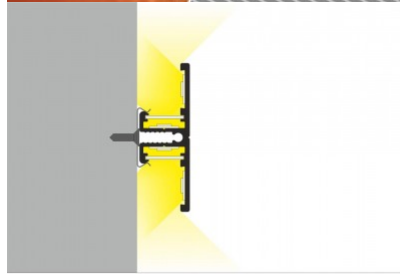
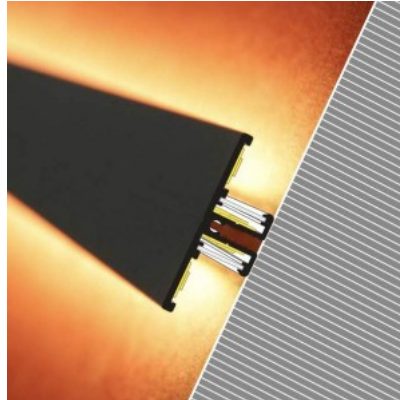
**Product code 15546**

Brand [TOPMET](#)

Casing colour silvery

Casing material aluminum

A surface-mounted aluminum profile is a practical method for installing an LED strip effectively. With an aluminum profile, there is no risk of the LED strip shifting out of place, and the profile cover maintains uniform and cozy light distribution. The profile is durable yet lightweight, ensuring a long lifespan and stability. Installing a surface-mounted aluminum profile is very easy. An aluminum profile is ideal for use in many different rooms. In the kitchen, a high-power LED strip with an aluminum profile works well above the work surface. In the living room, this combination can create cozy accent lighting. High IP-rated products are perfect for bathrooms, and in retail, LED strips with aluminum profiles are ideal for highlighting products! Trust your lighting project to the experienced team of LED House - [let's bring your vision to life!](#)



BACK10 A/UX

## Aluminium profile TOPMET BACK10 A/UX 2m white

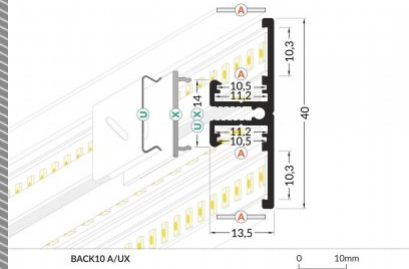
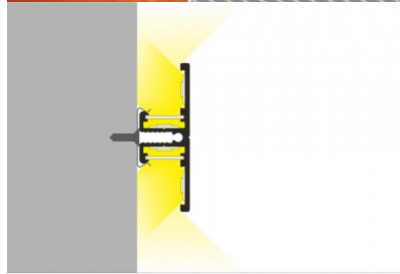
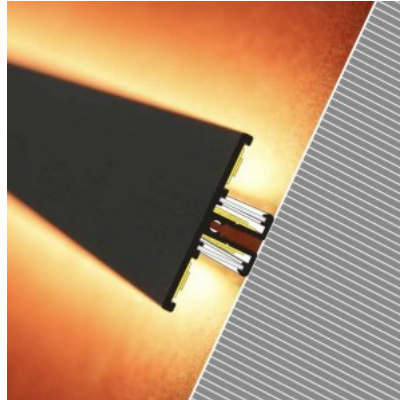
**Product code 15752**

Brand [TOPMET](#)

Casing colour white

Casing material aluminum

A surface-mounted aluminum profile is a practical method for installing an LED strip effectively. With an aluminum profile, there is no risk of the LED strip shifting out of place, and the profile cover maintains uniform and cozy light distribution. The profile is durable yet lightweight, ensuring a long lifespan and stability. Installing a surface-mounted aluminum profile is very easy. An aluminum profile is ideal for use in many different rooms. In the kitchen, a high-power LED strip with an aluminum profile works well above the work surface. In the living room, this combination can create cozy accent lighting. High IP-rated products are perfect for bathrooms, and in retail, LED strips with aluminum profiles are ideal for highlighting products! Trust your lighting project to the experienced team of LED House - [let's bring your vision to life!](#)



BACK10 A/UX

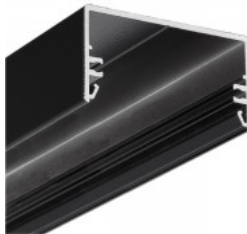
BACK10 A/UX

## Aluminium profile TOPMET LOWI 2m black

**Product code 17086**

Brand [TOPMET](#)  
Height 28.0mm  
Width 53.0mm  
Length 2000.0mm  
In box 15pcs  
Casing colour black  
Casing material aluminum

A surface-mounted aluminum profile is a practical method for installing an LED strip effectively. With an aluminum profile, there is no risk of the LED strip shifting out of place, and the profile cover maintains uniform and cozy light distribution. The profile is durable yet lightweight, ensuring a long lifespan and stability. Installing a surface-mounted aluminum profile is very easy. An aluminum profile is ideal for use in many different rooms. In the kitchen, a high-power LED strip with an aluminum profile works well above the work surface. In the living room, this combination can create cozy accent lighting. High IP-rated products are perfect for bathrooms, and in retail, LED strips with aluminum profiles are ideal for highlighting products! Trust your lighting project to the experienced team of LED House - [let's bring your vision to life!](#)



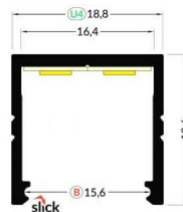
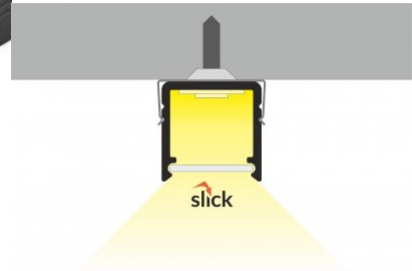
## Aluminium profile TOPMET SMART16 B/U4 2m black

**Product code 15533**

Brand [TOPMET](#)

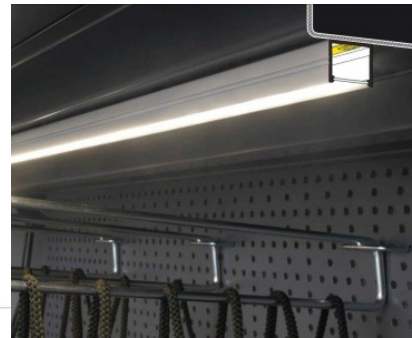
Casing colour black

A surface-mounted aluminum profile is a practical method for installing an LED strip effectively. With an aluminum profile, there is no risk of the LED strip shifting out of place, and the profile cover maintains uniform and cozy light distribution. The profile is durable yet lightweight, ensuring a long lifespan and stability. Installing a surface-mounted aluminum profile is very easy. An aluminum profile is ideal for use in many different rooms. In the kitchen, a high-power LED strip with an aluminum profile works well above the work surface. In the living room, this combination can create cozy accent lighting. High IP-rated products are perfect for bathrooms, and in retail, LED strips with aluminum profiles are ideal for highlighting products! Trust your lighting project to the experienced team of LED House - [let's bring your vision to life!](#)



SMART16 B/U4

0 10mm



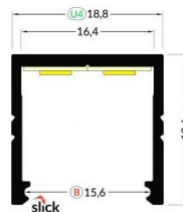
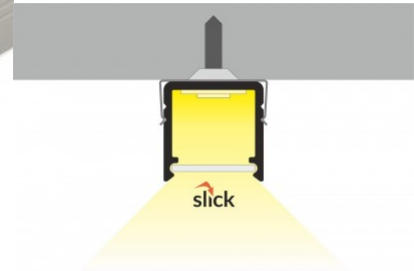
## Aluminium profile TOPMET SMART16 B/U4 2m silvery

**Product code 15515**

Brand [TOPMET](#)

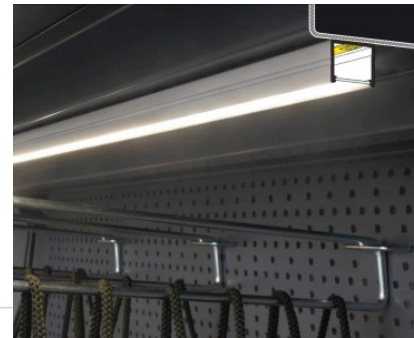
Casing colour silvery

A surface-mounted aluminum profile is a practical method for installing an LED strip effectively. With an aluminum profile, there is no risk of the LED strip shifting out of place, and the profile cover maintains uniform and cozy light distribution. The profile is durable yet lightweight, ensuring a long lifespan and stability. Installing a surface-mounted aluminum profile is very easy. An aluminum profile is ideal for use in many different rooms. In the kitchen, a high-power LED strip with an aluminum profile works well above the work surface. In the living room, this combination can create cozy accent lighting. High IP-rated products are perfect for bathrooms, and in retail, LED strips with aluminum profiles are ideal for highlighting products! Trust your lighting project to the experienced team of LED House - [let's bring your vision to life!](#)



SMART16 B/U4

0 10mm



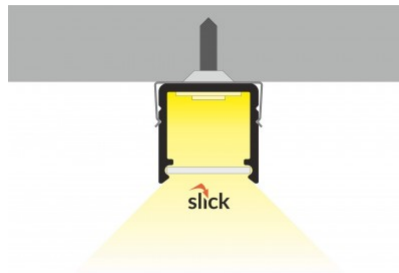
## Aluminium profile TOPMET SMART16 B/U4 2m white

**Product code 16280**

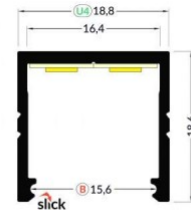
Brand [TOPMET](#)

Casing colour white

A surface-mounted aluminum profile is a practical method for installing an LED strip effectively. With an aluminum profile, there is no risk of the LED strip shifting out of place, and the profile cover maintains uniform and cozy light distribution. The profile is durable yet lightweight, ensuring a long lifespan and stability. Installing a surface-mounted aluminum profile is very easy. An aluminum profile is ideal for use in many different rooms. In the kitchen, a high-power LED strip with an aluminum profile works well above the work surface. In the living room, this combination can create cozy accent lighting. High IP-rated products are perfect for bathrooms, and in retail, LED strips with aluminum profiles are ideal for highlighting products! Trust your lighting project to the experienced team of LED House - [let's bring your vision to life!](#)

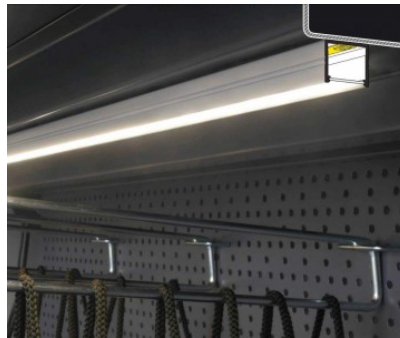


SMART16 B/U4



SMART16 B/U4

0 10mm



## Aluminium profile TOPMET SMART16 B/U4 3m black

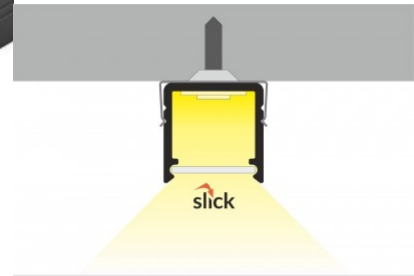
**Product code 15498**

Brand [TOPMET](#)

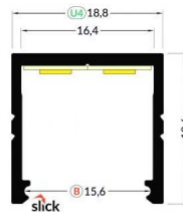
Length 3000.0mm

Casing colour black

A surface-mounted aluminum profile is a practical method for installing an LED strip effectively. With an aluminum profile, there is no risk of the LED strip shifting out of place, and the profile cover maintains uniform and cozy light distribution. The profile is durable yet lightweight, ensuring a long lifespan and stability. Installing a surface-mounted aluminum profile is very easy. An aluminum profile is ideal for use in many different rooms. In the kitchen, a high-power LED strip with an aluminum profile works well above the work surface. In the living room, this combination can create cozy accent lighting. High IP-rated products are perfect for bathrooms, and in retail, LED strips with aluminum profiles are ideal for highlighting products! Trust your lighting project to the experienced team of LED House - [let's bring your vision to life!](#)



SMART16 B/U4



SMART16 B/U4

0 10mm



## Aluminium profile TOPMET SURFACE14 2m silvery

**Product code 16345**

Brand [TOPMET](#)

Height 9.0mm

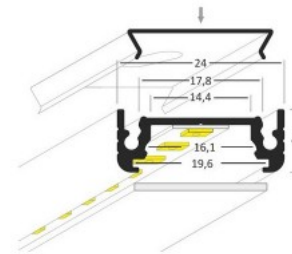
Width 24.0mm

Length 2000.0mm

Casing colour silvery

Casing material aluminum

A surface-mounted aluminum profile is a practical method for installing an LED strip effectively. With an aluminum profile, there is no risk of the LED strip shifting out of place, and the profile cover maintains uniform and cozy light distribution. The profile is durable yet lightweight, ensuring a long lifespan and stability. Installing a surface-mounted aluminum profile is very easy. An aluminum profile is ideal for use in many different rooms. In the kitchen, a high-power LED strip with an aluminum profile works well above the work surface. In the living room, this combination can create cozy accent lighting. High IP-rated products are perfect for bathrooms, and in retail, LED strips with aluminum profiles are ideal for highlighting products! Trust your lighting project to the experienced team of LED House - [let's bring your vision to life!](#)





## Aluminium profile TOPMET SURFACE14 2m white

**Product code 16126**

Brand [TOPMET](#)

Height 9.0mm

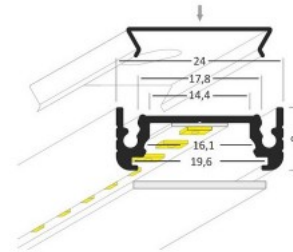
Width 24.0mm

Length 2000.0mm

Casing colour white

Casing material aluminum

A surface-mounted aluminum profile is a practical method for installing an LED strip effectively. With an aluminum profile, there is no risk of the LED strip shifting out of place, and the profile cover maintains uniform and cozy light distribution. The profile is durable yet lightweight, ensuring a long lifespan and stability. Installing a surface-mounted aluminum profile is very easy. An aluminum profile is ideal for use in many different rooms. In the kitchen, a high-power LED strip with an aluminum profile works well above the work surface. In the living room, this combination can create cozy accent lighting. High IP-rated products are perfect for bathrooms, and in retail, LED strips with aluminum profiles are ideal for highlighting products! Trust your lighting project to the experienced team of LED House - [let's bring your vision to life!](#)



## Aluminium profile TOPMET UNI12 BCD/U 2m silvery

**Product code 16242**

---

Brand [TOPMET](#)

Length 2000.0mm

Casing colour silvery

Casing material aluminum

A surface-mounted aluminum profile is a practical method for installing an LED strip effectively. With an aluminum profile, there is no risk of the LED strip shifting out of place, and the profile cover maintains uniform and cozy light distribution. The profile is durable yet lightweight, ensuring a long lifespan and stability. Installing a surface-mounted aluminum profile is very easy. An aluminum profile is ideal for use in many different rooms. In the kitchen, a high-power LED strip with an aluminum profile works well above the work surface. In the living room, this combination can create cozy accent lighting. High IP-rated products are perfect for bathrooms, and in retail, LED strips with aluminum profiles are ideal for highlighting products! Trust your lighting project to the experienced team of LED House - [let's bring your vision to life!](#)

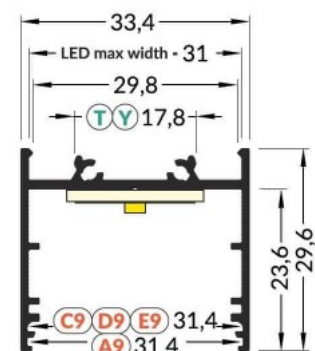


## Aluminium profile TOPMET VARIO30-02 2m white

**Product code 15988**

Brand [TOPMET](#)  
 Height 29.6mm  
 Width 33.4mm  
 Length 2000.0mm  
 Casing colour white  
 Casing material aluminum

A surface-mounted aluminum profile is a practical method for installing an LED strip effectively. With an aluminum profile, there is no risk of the LED strip shifting out of place, and the profile cover maintains uniform and cozy light distribution. The profile is durable yet lightweight, ensuring a long lifespan and stability. Installing a surface-mounted aluminum profile is very easy. An aluminum profile is ideal for use in many different rooms. In the kitchen, a high-power LED strip with an aluminum profile works well above the work surface. In the living room, this combination can create cozy accent lighting. High IP-rated products are perfect for bathrooms, and in retail, LED strips with aluminum profiles are ideal for highlighting products! Trust your lighting project to the experienced team of LED House - [let's bring your vision to life!](#)

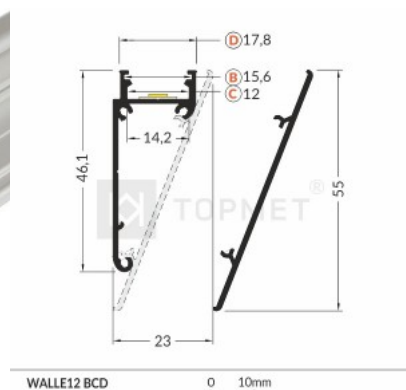


## Aluminium profile TOPMET WALLE12 BCD 2m silvery

**Product code 16161**

Brand [TOPMET](#)  
 Length 2000.0mm  
 Casing colour silvery  
 Casing material aluminum

LED wall profile. To achieve a triangular set, the WALLE12 cover strip needs to be added.



## Aluminium profile TOPMET WALLE12 cover 2m silvery

Product code 16163

Brand [TOPMET](#)  
Length 2000.0mm  
Casing colour silvery  
Casing material aluminum

LED wall profile WALLE12 cover strip.

