

Motion sensor EMOS G1110 230V IP20

Product code 17090

Brand [EMOS](#)

Supply voltage 230V

Maximum output 400W/1m

Protection class IP20

Height 22.0mm

Width 37.0mm

Length 55.0mm

Weight 65 g

In box 100pcs

Work environment indoor use

Certificates CE, RoHS



Detection distance 6 m Detection angle 360° Switching time 5 s, 30 s, 1 min, 3 min, 5 min, 8 min Sensor type PIR

Motion sensor EMOS G1125 black 230V IP44

Product code 17091

Brand [EMOS](#)

Supply voltage 230V

Maximum output 300W/1m

Protection class IP44

Height 85.0mm

Width 75.0mm

Length 85.0mm

Weight 179 g

Casing colour black

Work environment indoor use

Certificates CE, RoHS



Detection distance 12m Detection angle 180° Switching time min. 10 seconds – max. 7 minutes Sensor type PIR

Motion sensor EMOS G1160 white 230V IP20

Product code 17092

Brand [EMOS](#)

Supply voltage 230V

Maximum output 200W/1m

Protection class IP20

Height 75.0mm

Width 70.0mm

Length 70.0mm

Diameter 70.0mm

Installation opening diameter 45mm

Weight 126 g

Casing colour white

Work environment indoor use

Certificates CE, RoHS



Detection distance 6 m Detection angle 360° Switching time min. 10 sekunds – max. 15 minutes Sensor type PIR

Motion sensor EMOS G1240 white 230V IP65

Product code 17093

Brand [EMOS](#)

Supply voltage 230V

Maximum output 600W/1m

Protection class IP65

Height 65.0mm

Width 65.0mm

Length 75.0mm

Casing colour white

Work environment indoor use

Certificates CE, RoHS



Detection distance 12 m Detection angle 180° Switching time min. 10 sekunds – max. 15 minutes Sensor type PIR

Motion sensor ER-C gray 5-24V IP20

Product code 18134

Supply voltage 5-24V
Protection class IP20
Length 18.0mm
Diameter 26.0mm
Installation opening diameter 20mm
Casing colour gray
Work environment indoor use
Certificates CE
Warranty 5 years

This motion sensor features a compact, concealed aluminum housing, making it suitable for various lighting solutions. The device operates on low-voltage power and provides a stable signal output. It detects movement within a specific range and angle, automatically turning on the light when motion is detected and switching it off when the area is vacant. Compatible with different lighting controllers, including stair lighting and dimming systems, it offers an intelligent and energy-efficient solution.



Motion sensor HC005S/BT 230V IP20

Product code 19617

Supply voltage 230V
 Maximum output 400W/1m
 Rated current 1700mA
 Protection class IP20
 Lifespan 50000h
 Height 25.5mm
 Width 39.9mm
 Length 79.4mm
 Weight 30 g
 Casing material plastic
 Work environment indoor use
 Operation temperature -35 - + 70°C
 Certificates CE
 Warranty 5 years



A smart motion sensor that makes lighting control simple and energy-efficient. The device detects movement using microwave and Bluetooth technology and automatically turns lights on and off, operating only when needed. The HC005S/BT is easy to install and configure - you can adjust sensitivity, time delay, and light level according to your needs. With its long-lasting design, the device is a reliable solution for automating lighting in homes, offices, corridors, or other spaces.

Motion sensor HD01S-9 230V IP20

Product code 15585

Supply voltage 230V
 Protection class IP20
 Lifespan 50000h
 Height 26.0mm
 Width 37.0mm
 Length 80.0mm
 Casing material plastic
 Work environment indoor use
 Operation temperature -35 - + 70°C
 Certificates CE
 Warranty 5 years



Motion sensor HYTRONIK HC402S/T 230V 400W IP20 TRIAC

Product code 15063 TRIAC dimmable

Brand [HYTRONIK](#)

Supply voltage 230V

Dimmable TRIAC

Output 400W

Maximum output 400W/1m

Protection class IP20

Height 70.0mm

Diameter 80.0mm

Installation opening diameter 72mm

Casing material plastic

Work environment indoor use

Certificates CE

Warranty 5 years



Motion sensor LX06 white 230V IP20

Product code 16036

Supply voltage 230V

Maximum output 300W/1m

Protection class IP20

Height 60.0mm

Diameter 118.0mm

Weight 17 g

In box 100pcs

Casing colour white

Work environment indoor use

Operation temperature -20~40°C

Certificates CE, RoHS

Warranty 2 years



Surface motion sensor Working time
10s-8min Installation height 2-4m
Working radius 2-12m Identification
angle 360 ° Maximum power LED
300W.r

Motion sensor LX41 white 230V IP20

Product code 15852

Supply voltage 230V
Maximum output 300W/1m
Protection class IP20
Height 75.0mm
Diameter 76.0mm
Installation opening diameter 62mm
Weight 100 g
In box 50pcs
Casing colour white
Work environment indoor use
Operation temperature -20~40°C
Certificates CE, RoHS



Motion sensor LX42 230V IP20

Product code 15851

Supply voltage 230V
Maximum output 100W/1m
Protection class IP20
Width 35.0mm
Length 57.0mm
Weight 40 g
In box 100pcs
Work environment indoor use
Operation temperature -20~40°C
Certificates CE, RoHS



Motion sensor Optonica SKU7317 white 230V 300W 360° IP20 DALI

Product code 22290 DALI dimmable

Brand [Optonica](#)
Supply voltage 230V
Dimmable DALI
Output 300W
Lens angle 360
Protection class IP20
Height 76.0mm
Diameter 58.0mm
Casing colour white
Work environment indoor use
Operation temperature -20~40°C
Warranty 2 years



Motion sensor SKYDANCE 4A door sensor 12-24V

Product code 17791

Brand [SKYDANCE](#)

Supply voltage 12-24V

Height 7.5mm

Width 11.0mm

Length 50.0mm

In package 1pc

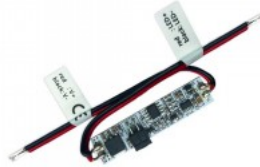
Casing material plastic

Work environment indoor use

Operation temperature -30° - +55°C

Certificates CE, EMC, LVD, RoHS

Warranty 5 years



Door sensor switch for LED strip.

Motion sensor SKYDANCE Door sensor E1-L+ED 12-24V IP20

Product code 16738

Brand [SKYDANCE](#)

Supply voltage 12-24V

Output voltage 12-24V

Maximum output 192W/1m

Rated current 8000mA

Protection class IP20

Height 18.0mm

Width 33.0mm

Length 97.0mm

Casing material plastic

Work environment indoor use

Operation temperature -30~55°C

Certificates CE

Warranty 5 years



Motion sensor SKYDANCE Door sensor E1-L+EDC 12-24V IP20

Product code 17940

Brand [SKYDANCE](#)

Supply voltage 12-24V

Output voltage 12-24V

Maximum output 192W/1m

Rated current 8000mA

Protection class IP20

Height 18.0mm

Width 33.0mm

Length 97.0mm

Casing material plastic

Work environment indoor use

Operation temperature -30~55°C

Certificates CE

Warranty 5 years



Motion sensor SKYDANCE Door sensor ED-VC 24V IP20

Product code 17942

Brand [SKYDANCE](#)

Supply voltage 24V

Maximum output 24W/1m

Rated current 1000mA

Protection class IP20

Height 31.5mm

Diameter 10.5mm

In package 1pc

Casing material plastic

Work environment indoor use

Operation temperature -30° - +50°C

Certificates CE, EMC, LVD

Warranty 5 years



Motion sensor SKYDANCE E1-L 12-24V IP20

Product code 19677

Brand [SKYDANCE](#)

Supply voltage 12-24V

Output voltage 12-24V

Maximum output 192W/1m

Rated current 8000mA

Protection class IP20

Height 18.0mm

Width 33.0mm

Length 97.0mm

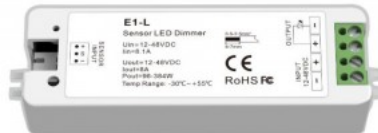
Casing material plastic

Work environment indoor use

Operation temperature -30~55°C

Certificates CE

Warranty 5 years



Motion sensor SKYDANCE EH-R(WT) white 230V IP20 0-10V / RF

Product code 18232 0-10V / RF dimmable

Brand [SKYDANCE](#)

Supply voltage 230V

Dimmable 0-10V / RF

Protection class IP20

Height 51.0mm

Diameter 95.0mm

Installation opening diameter 86mm

Casing colour white

Work environment indoor use

Certificates CE

Warranty 5 years

A Ceiling-Mounted PIR Motion Sensor Switch is designed for efficient lighting control in indoor spaces such as offices, meeting rooms, and classrooms. This advanced sensor features a built-in daylight sensor for real-time detection of human motion and ambient light levels. It outputs a 0/1-10V signal, compatible with dimmable drivers, and operates with high voltage AC input, ensuring reliable performance. Lighting can be controlled effortlessly via the Tuya Smart APP, allowing adjustments to sensor sensitivity, hold time, stand-by time, and light sensing thresholds. Manual adjustments can also be made using three convenient knobs. The device functions as an RF remote, emitting a 2.4G signal for compatibility with RF LED controllers or dimmable drivers. This smart, versatile solution enhances indoor lighting experiences.



Motion sensor SKYDANCE ER-AV 24V IP20

Product code 17792

Brand [SKYDANCE](#)

Supply voltage 24V

Maximum output 36W/1m

Rated current 1500mA

Protection class IP20

Height 30.0mm

Width 45.0mm

Length 80.0mm

In package 1pc

Casing material plastic

Work environment indoor use

Operation temperature -30° - +50°C

Certificates CE, EMC, LVD

Warranty 5 years



Скрытый ИК-датчик движения,
выход с постоянным напряжением,
подключается к низковольтной
светодиодной ленте.

Motion sensor SKYDANCE EW IP20

Product code 19678

Brand [SKYDANCE](#)

Maximum output 36W/1m

Protection class IP20

In package 1pc

Casing material plastic

Work environment indoor use

Operation temperature -30° - +50°C

Certificates CE, EMC, LVD

Warranty 5 years



Motion sensor SKYDANCE Hand swipe switch E2-B CCT 12-24V 72W IP20

Product code 19194

Brand [SKYDANCE](#)

Supply voltage 12-24V

Output voltage 12-24V

Output 72W

Maximum output 72W/1m

Rated current 3000mA

Protection class IP20

Height 5.3mm

Width 10.0mm

Length 52.0mm

Weight 10 g

Casing material aluminium

Work environment indoor use

Operation temperature -30° - +55°C

Certificates CE, RoHS, LVD, emc

Warranty 5 years



Wave sensor switch. The switch requires at least a 5x8mm recess on the surface.

Stair controller SKYDANCE Smooth connection to the stairs ES32 5-24V IP20

Product code 16087

Brand [SKYDANCE](#)

Supply voltage 5-24V

Output voltage 5-24V

Maximum output 768W/1m

Rated current 1000mA

Protection class IP20

Height 25.5mm

Width 68.0mm

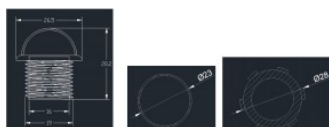
Length 186.0mm

Casing material plastic

Work environment indoor use

Certificates CE

Warranty 5 years



Motion sensor SKYDANCE Viibutussensor switch E1-B 12-24V 12-24V 96W IP20

Product code 17819

Brand [SKYDANCE](#)

Supply voltage 12-24V

Output voltage 12-24V

Output 96W

Maximum output 96W/1m

Rated current 4000mA

Protection class IP20

Height 9.0mm

Width 4.9mm

Length 50.0mm

Weight 10 g

Casing material aluminium

Work environment indoor use

Operation temperature -30° - +55°C

Certificates CE, RoHS, LVD, emc

Warranty 5 years



Wave sensor switch. Automatic shut-off, with light adjustment capability. The switch requires at least a 5x8mm recess on the surface.

Motion sensor STEINEL HF 360-2 white 230V IP20 DALI

Product code 22407 DALI dimmable

Brand [STEINEL](#)

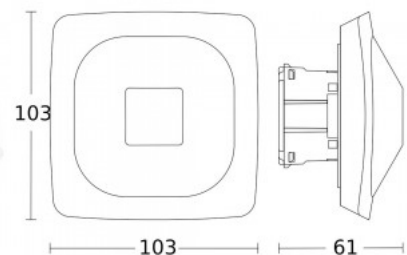
Supply voltage 230V

Dimmable DALI

Maximum output 2000W/1m

Protection class IP20

Casing colour white



Presence detector STEINEL IR Quattro MICRO white 230V 1000W IP65

Product code 19970

Brand [STEINEL](#)
Supply voltage 230V
Output 1000W
Maximum output 1000W/1m
Protection class IP65
Casing colour white



Motion sensor STEINEL IS 240 DUO black 230V 1000W IP54

Product code 22068

Brand [STEINEL](#)
Supply voltage 230V
Output 1000W
Maximum output 1000W/1m
Protection class IP54
Height 90.0mm
Width 60.0mm
Length 100.0mm
Casing colour black



Motion sensor STEINEL IS 240 DUO white 230V 1000W IP54

Product code 22069

Brand [STEINEL](#)
Supply voltage 230V
Output 1000W
Maximum output 1000W/1m
Protection class IP54
Height 90.0mm
Width 60.0mm
Length 100.0mm
Casing colour white



Motion sensor STEINEL IS 345 white 230V IP54 DALI

Product code 22432 DALI dimmable

Brand [STEINEL](#)

Supply voltage 230V

Dimmable DALI

Maximum output 2000W/1m

Protection class IP54

Height 95.0mm

Width 95.0mm

Length 65.0mm

Casing colour white



Motion sensor STEINEL IS345 MX Highbay 230V IP54 DALI

Product code 19971 DALI dimmable

Brand [STEINEL](#)

Supply voltage 230V

Dimmable DALI

Protection class IP54



Motion sensor STEINEL TRUE PRESENCE KNX UP white 230V IP20

Product code 19935

Brand [STEINEL](#)

Supply voltage 230V

Maximum output 2000W/1m

Protection class IP20

Casing colour white

A high-end presence detector that detects human presence precisely and reliably – even when there is almost no movement. The device operates in the KNX system, enabling automatic control of lighting, ventilation, and other building functions. The concealed installation and white design allow the sensor to blend seamlessly into any interior.



Motion sensor THEBEN LUXA S180BK black 230V IP55

Product code 14339

Brand [THEBEN](#)

Supply voltage 230V

Protection class IP55

Casing colour black

Casing material plastic

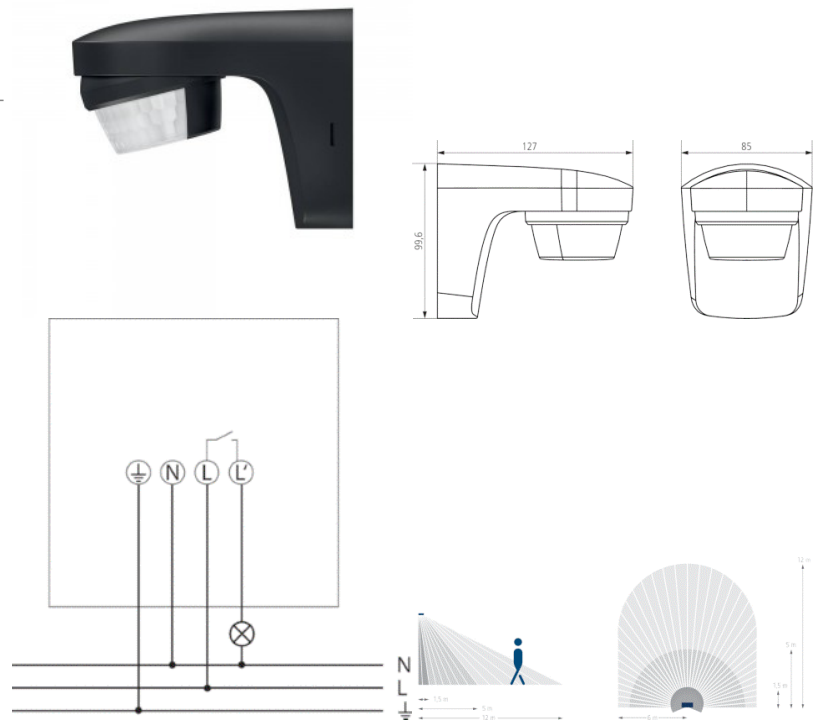
Polishing matt

Operation temperature -25 °C - +45°C

Certificates CE, RoHS

Warranty 2 years

Detection angle 180° Installation
height 2 - 4 m Light switch-off delay 1
s-20 min Theben AG Hohenbergstr. 32
72401 Haigerloch GERMANY



Motion sensor THEBEN LUXA S180WH white 230V IP55

Product code 14361

Brand [THEBEN](#)

Supply voltage 230V

Protection class IP55

Casing colour white

Casing material plastic

Operation temperature -25 °C - +45°C

Certificates CE, RoHS

Detection angle 180° Installation
height 2 - 4 m Light switch-off delay 1
s-20 min Theben AG Hohenbergstr. 32
72401 Haigerloch GERMANY

