

DMX Splitter 12 x RJ45 230V IP20

Product code 16202

Supply voltage 230V
Maximum output 80W/1m
Protection class IP20
Height 44.4mm
Width 182.0mm
Length 485.0mm
Weight 2400g
Certificates CE



12 optical isolated outputs Full-RDM support Available with Neutrik XLR5-, XLR3- or etherCON RJ45-connectors Custom combinations for XLR5 and XLR3 possible Combinable with the Major 2U powerCON power distribution box Removable 19"-brackets Switch for DMX-termination

DMX Splitter 4 x XLR3 230V IP20

Product code 16408

Supply voltage 230V
Protection class IP20
Certificates CE



Controller CHROMATEQ CQSA-E 1024 black 5-24V IP20

Product code 15995

Brand [CHROMATEQ](#)

Supply voltage 5-24V

Protection class IP20

Height 38.0mm

Width 166.0mm

Length 97.0mm

Weight 200g

In package 1pc

Casing colour black

Casing material plastic

Operation temperature -25 to +70°C

Certificates CE, RoHS

Warranty 3 years

- Ethernet to DMX device • 2x512 or 1024 channels in/out on PC and Stand Alone • ETHERNET port for Local Area Network (LAN, WLAN) • Wi-Light 2 APP from mobile (Android + iOS, LAN, WLAN, Internet) • Art-net 2x512 on Ethernet (SD required, 8x512 per device in option) • sACN 2x512 on Ethernet (SD required, 8x512 per device in option) • Node 2 ports, Art-Net to DMX decoder and converter (DHCP, Fix IP) • Multi Zones Play up to 5 scenes a time (Stand alone) • SD Card memory (Micro SD, all FAT format, up to 256 Gb) • Splitter mode and merging DMX • Internal memory (No SD card required) • 128 devices max on Network, 12 max on USB



Controller CHROMATEQ LPSA-DIN DMX512 DMX

Product code 13815 DMX dimmable

Brand [CHROMATEQ](#)

Dimmable DMX

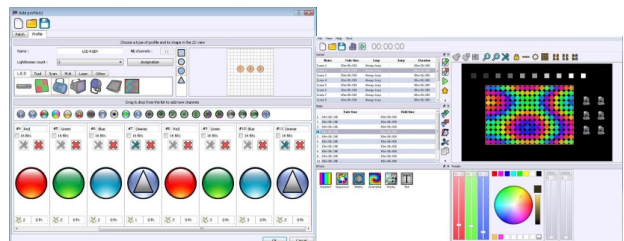
Height 107.0mm

Width 96.0mm

Length 59.0mm

Weight 170g

Warranty 2 years



Controller CHROMATEQ LPSA512 5V

Product code 13832

Brand [CHROMATEQ](#)

Supply voltage 5V

Weight 200g

Warranty 2 years

- LED Player + Pro DMX (30 mn Timeline) compatible
- Mini USB 2.0
- 512 In/Out Stand Alone DMX channels (using no PC)
- 1 ARTNET Universe (since 11/2012 and 1.3.0 release min.)
- 4 Mb of internal memory (min. capacity: 4,000 steps/512 ch)
- Real Time Clock triggers for each scene (Day, Week, Month, Year)
- Automatic Scene Recovery if the power is accidentally cut off
- 10 LED switch button triggering
- 15 contact closure triggering (4 wires multiplexed on RJ45)
- IR Remote Control Triggering via a RJ45 connector (Optional)
- Scene selection with Next and Previous buttons
- Cross Fade time between scenes in Stand Alone
- Speed and Dimmer adjustment for each scene in Stand Alone
- 16 bits, micro and fine DMX channel management in Stand Alone
- Master/Slave mode to interconnect 16 interfaces (Stand Alone)
- 3 Pins XLR and 3 Pins terminal block
- Housing that can be wall-mounted and DIN RAIL mounted
- Power: 5V. DC ; 0.450 A (external Power Supply is included)
- Dimensions and Weight: H: 4 cm ; W: 11 cm ; L: 12 cm ; 0.2 Kgs
- Operating temperatures: -25 to +70 C°
- Certifications: CE ; RoHS

