

Aluminium profile cover ALU Flat, 2m, milky 40%

Product code 13923

Length 2000.0mm

Cover for aluminum profile. The cover is made of high-quality plastic, which ensures even light distribution and reduces glare. Illuminate your world with the help of LED House professionals - check out our project portfolio here!



Aluminium profile cover ALU Flat, 2m, transparent 91%

Product code 13922

Cover for aluminum profile. The cover is made of high-quality plastic, which ensures even light distribution and reduces glare. Illuminate your world with LED House professionals - [check out our project portfolio here!](#)



Aluminium profile cover ALU Triple, 2m, milky 70%

Product code 13750

Length 2000.0mm

Cover for aluminum profile. The cover is made of high-quality plastic, which ensures even light distribution and reduces glare. Illuminate your world with LED House professionals - [check out our project portfolio here!](#)

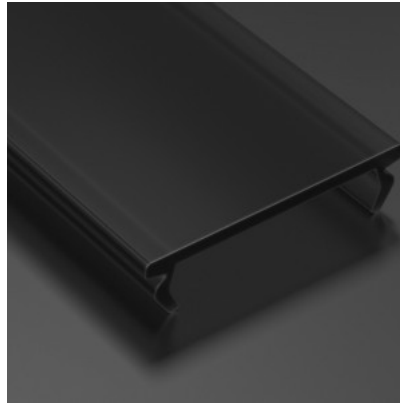


Aluminium profile cover LUMINES DOUBLE PMMA, 2m, black 25%

Product code 16119

Brand [LUMINES](#)
Length 2020.0mm

Cover for aluminum profile. The cover is made of high-quality plastic, which ensures even light distribution and reduces glare. Illuminate your world with LED House professionals - [check out our project portfolio here!](#)



Aluminium profile cover LUMINES DOUBLE PMMA, 2m, frosted 78%

Product code 14766

Brand [LUMINES](#)
Length 2020.0mm

Cover for aluminum profile. SILEDA, inSILEDA, DILEDA, inDILEDA, UNICO, DOPIO, TALIA, inTALIA, ZATI, SUBLI, LOGI, CONVA, TOPO, PERO, VEDA The cover is made of high-quality plastic, which ensures even light distribution and reduces glare. Illuminate your world with LED House professionals - [check out our project portfolio here!](#)



Aluminium profile cover LUMINES DOUBLE PMMA, 2m, milky 51%

Product code 14723

Brand [LUMINES](#)
Length 2020.0mm

Cover for aluminum profile. The cover is made of high-quality plastic, which ensures even light distribution and reduces glare. Illuminate your world with LED House professionals - [check out our project portfolio here!](#)

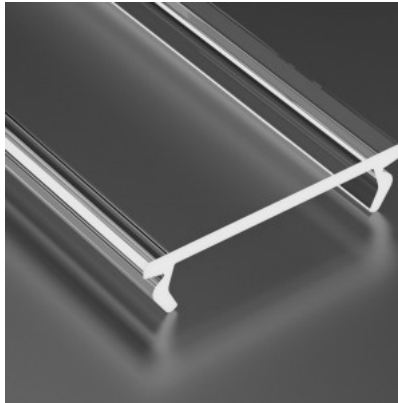


Aluminium profile cover LUMINES DOUBLE PMMA, 2m, transparent 94%

Product code 16709

Brand [LUMINES](#)
Length 2000.0mm

Cover for aluminum profile. SILEDA, inSILEDA, DILEDA, inDILEDA, UNICO, DOPIO, TALIA, inTALIA, ZATI, SUBLI, LOGI, CONVA, TOPO, PERO, VEDA The cover is made of high-quality plastic, which ensures even light distribution and reduces glare. Illuminate your world with LED House professionals - [check out our project portfolio here!](#)



Aluminium profile cover LUMINES DOUBLE PMMA, 3m, frosted 78%

Product code 16212

Brand [LUMINES](#)
Length 3000.0mm

Cover for aluminum profile. SILEDA, inSILEDA, DILEDA, inDILEDA, UNICO, DOPIO, TALIA, inTALIA, ZATI, SUBLI, LOGI, CONVA, TOPO, PERO, VEDA The cover is made of high-quality plastic, which ensures even light distribution and reduces glare. Illuminate your world with LED House professionals - [check out our project portfolio here!](#)



Aluminium profile cover LUMINES DOUBLE PMMA, 3m, milky 51%

Product code 14815

Brand [LUMINES](#)

Length 3000.0mm

Cover for aluminum profile. The cover is made of high-quality plastic, which ensures even light distribution and reduces glare. Illuminate your world with LED House professionals - [check out our project portfolio here!](#)



Aluminium profile cover LUMINES DOUBLE PMMA, 3m, milky frosted 75%

Product code 17724

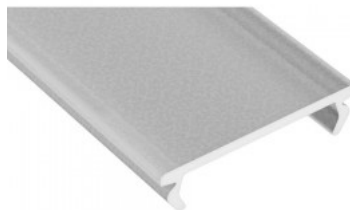
Brand [LUMINES](#)

Length 3000.0mm

Casing material plastic

Polishing matt

Upper cover for DULIO aluminum profile. The cover is made of high-quality plastic, which ensures even light distribution and reduces glare. Illuminate your world with LED House professionals - [check out our project portfolio here!](#)



Aluminium profile cover LUMINES PC (A B C D G H Y Z), 2m, frozen 78%

Product code 16442

Brand [LUMINES](#)
Length 2020.0mm
Casing material polycarbonate
Operation temperature -50 ~ 100°C

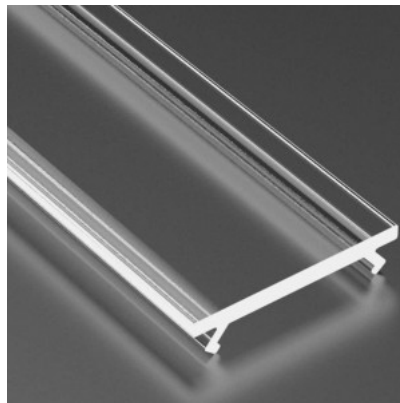
Aluminum profile cover with frosted glass, which helps create softly diffused light. Suitable for objects with higher temperatures, such as outdoor environments, sauna.



Aluminium profile cover LUMINES PC 2m, transparent 88%

Product code 14311

Brand [LUMINES](#)
Cover for aluminum profile. The cover is made of high-quality plastic, which ensures even light distribution and reduces glare. Illuminate your world with LED House professionals - [check out our project portfolio here!](#)

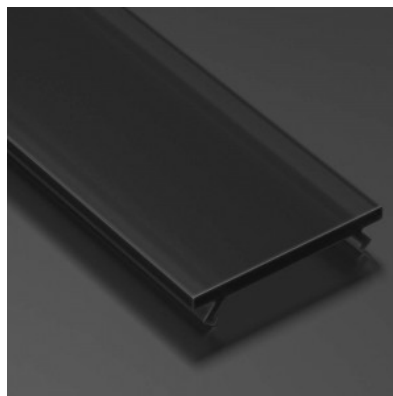


Aluminium profile cover LUMINES PMMA (A B C D G H Y Z) 2m, frosted 24% black

Product code 15847

Brand [LUMINES](#)
Length 2020.0mm
Casing colour black

Cover for aluminum profile. The cover is made of high-quality plastic, which ensures even light distribution and reduces glare. Illuminate your world with LED House professionals - [check out our project portfolio here!](#)



Aluminium profile cover LUMINES PMMA (A B C D G H Y Z) 2m, frosted 83%

Product code 14581

Brand [LUMINES](#)
Length 2020.0mm
Casing material plastic

Cover for aluminum profile. SILEDA, inSILEDA, DILEDA, inDILEDA, UNICO, DOPIO, TALIA, inTALIA, ZATI, SUBLI, LOGI, CONVA, TOPO, PERO, VEDA The cover is made of high-quality plastic, which ensures even light distribution and reduces glare. Illuminate your world with LED House professionals - [check out our project portfolio here!](#)



Aluminium profile cover LUMINES PMMA (A B C D G H Y Z) 2m, milky 51%

Product code 14580

Brand [LUMINES](#)
Length 2000.0mm

Cover for aluminum profile. The cover is made of high-quality plastic, which ensures even light distribution and reduces glare. Illuminate your world with LED House professionals - [check out our project portfolio here!](#)

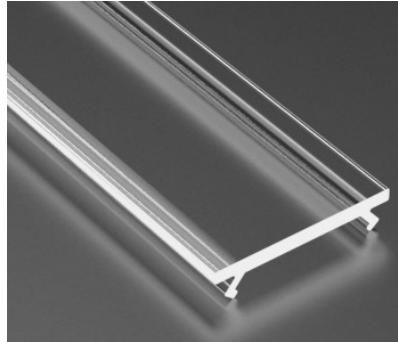


Aluminium profile cover LUMINES PMMA (A B C D G H Y Z) 2m, transparent 95%

Product code 14579

Brand [LUMINES](#)
Length 2000.0mm

Cover for aluminum profile. The cover is made of high-quality plastic, which ensures even light distribution and reduces glare. Illuminate your world with LED House professionals - [check out our project portfolio here!](#)

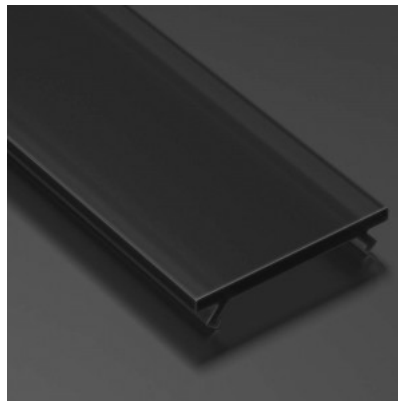


Aluminium profile cover LUMINES PMMA (A B C D G H Y Z) 3m, frosted 24% black

Product code 16648

Brand [LUMINES](#)
Length 3000.0mm
Casing colour black

Cover for aluminum profile. The cover is made of high-quality plastic, which ensures even light distribution and reduces glare. Illuminate your world with LED House professionals - [check out our project portfolio here!](#)



Aluminium profile cover LUMINES PMMA (A B C D G H Y Z) 3m, frosted 83%

Product code 16332

Brand [LUMINES](#)
Length 3000.0mm
Casing material plastic

Cover for aluminum profile. The cover is made of high-quality plastic, which ensures even light distribution and reduces glare. Illuminate your world with LED House professionals - [check out our project portfolio here!](#)



Aluminium profile cover LUMINES PMMA (A B C D G H Y Z) 3m, milky 51%

Product code 15291

Brand [LUMINES](#)
Length 3000.0mm

Cover for aluminum profile. The cover is made of high-quality plastic, which ensures even light distribution and reduces glare. Illuminate your world with LED House professionals - [check out our project portfolio here!](#)



Aluminium profile cover LUMINES PMMA (A B C D G H Y Z), 2m, frozen 78%

Product code 14285

Brand [LUMINES](#)
Length 2020.0mm
Casing material plastic
Operation temperature -20 ~ 70°C

Cover for aluminum profile. The cover is made of high-quality plastic, which ensures even light distribution and reduces glare. Illuminate your world with LED House professionals - [check out our project portfolio here!](#)



Aluminium profile cover LUMINES PMMA (X,MICO) 2m, frosted 78%

Product code 15529

Brand [LUMINES](#)
Length 2020.0mm
Casing material plastic

Cover for aluminum profile. The cover is made of high-quality plastic, which ensures even light distribution and reduces glare. Illuminate your world with LED House professionals - [check out our project portfolio here!](#)



Aluminium profile cover LUMINES PMMA (X,MICO) 2m, milky 51%

Product code 15531

Brand [LUMINES](#)
Length 2000.0mm

Cover for aluminum profile. The cover is made of high-quality plastic, which ensures even light distribution and reduces glare. Illuminate your world with LED House professionals - [check out our project portfolio here!](#)

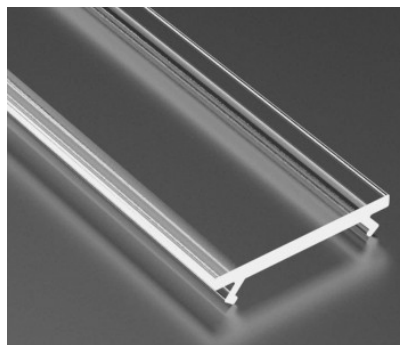


Aluminium profile cover LUMINES PMMA (X,MICO) 2m, transparent 95%

Product code 15530

Brand [LUMINES](#)
Length 2000.0mm

Cover for aluminum profile. The cover is made of high-quality plastic, which ensures even light distribution and reduces glare. Illuminate your world with LED House professionals - [check out our project portfolio here!](#)

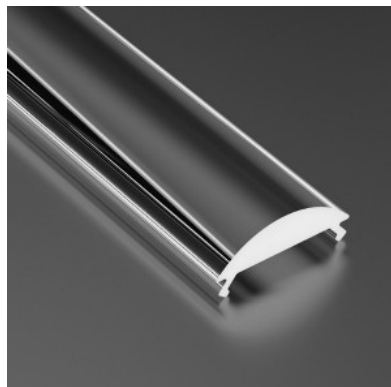


Aluminium profile cover LUMINES PMMA Lens 15° (A, B, C, D, G, H, Y, Z, COSMO, RETO), 2m, transparent 95%

Product code 15060

Brand [LUMINES](#)
Length 2000.0mm

Cover for aluminum profile. The cover is made of high-quality plastic, which ensures even light distribution and reduces glare. Illuminate your world with LED House professionals - [check out our project portfolio here!](#)

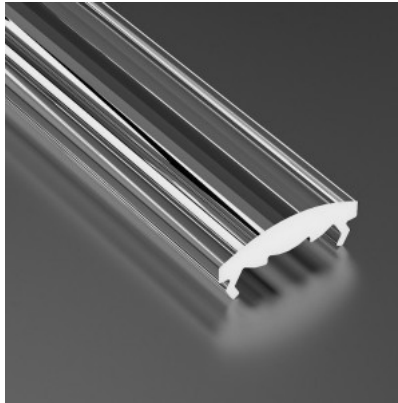


Aluminium profile cover LUMINES PMMA Lens 30° (A, B, C, D, G, H, Y, Z, COSMO, RETO), 2m, transparent 95%

Product code 15061

Brand [LUMINES](#)

Cover for aluminum profile. The cover is made of high-quality plastic, which ensures even light distribution and reduces glare. Illuminate your world with LED House professionals - [check out our project portfolio here!](#)

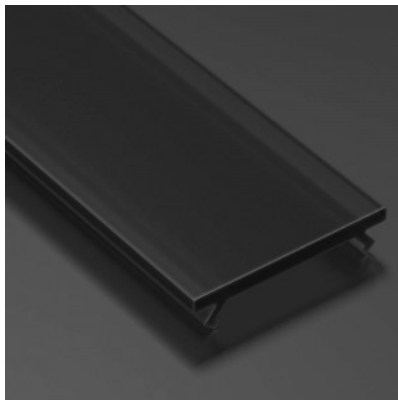


Aluminium profile cover LUMINES PMMA SLIM (X,MICO) 2m, black 24%

Product code 16370

Brand [LUMINES](#)
Length 2020.0mm

Cover for aluminum profile. The cover is made of high-quality plastic, which ensures even light distribution and reduces glare. Illuminate your world with LED House professionals - [check out our project portfolio here!](#)



Aluminium profile cover LUMINES PMMA WIDE 2m, milky 42%

Product code 14582

Brand [LUMINES](#)
Length 2020.0mm

Cover for aluminum profile. The cover is made of high-quality plastic, which ensures even light distribution and reduces glare. Illuminate your world with LED House professionals - [check out our project portfolio here!](#)



Aluminium profile cover LUMINES PMMA WIDE, 2m, frosted 74%

Product code 14583

Brand [LUMINES](#)
Length 2000.0mm

Cover for aluminum profile. The cover is made of high-quality plastic, which ensures even light distribution and reduces glare. Illuminate your world with LED House professionals - [check out our project portfolio here!](#)



Aluminium profile cover LUMINES PMMA WIDE, 2m, frosted 81%

Product code 16976

Brand [LUMINES](#)
Length 2000.0mm

Cover for aluminum profile. The cover is made of high-quality plastic, which ensures even light distribution and reduces glare. Illuminate your world with LED House professionals - [check out our project portfolio here!](#)



Aluminium profile cover LUMINES PMMA WIDE, 2m, frozen 73%

Product code 17123

Brand [LUMINES](#)
Length 2000.0mm
In box 10pcs

Cover for aluminum profile. The cover is made of high-quality plastic, which ensures even light distribution and reduces glare. Illuminate your world with LED House professionals - [check out our project portfolio here!](#)



Aluminium profile cover LUMINES PMMA WIDE, 3m, frosted 74%

Product code 16690

Brand [LUMINES](#)
Length 3000.0mm

Cover for aluminum profile. The cover is made of high-quality plastic, which ensures even light distribution and reduces glare. Illuminate your world with LED House professionals - [check out our project portfolio here!](#)



Aluminium profile cover LUMINES PMMA WIDE, 3m, frosted 81%

Product code 16977

Brand [LUMINES](#)
Length 3000.0mm

Cover for aluminum profile. The cover is made of high-quality plastic, which ensures even light distribution and reduces glare. Illuminate your world with LED House professionals - [check out our project portfolio here!](#)



Aluminium profile cover LUMINES PMMA WIDE, 3m, frozen 73%

Product code 15396

Brand [LUMINES](#)
Length 3000.0mm
In box 10pcs

Cover for aluminum profile. The cover is made of high-quality plastic, which ensures even light distribution and reduces glare. Illuminate your world with LED House professionals - [check out our project portfolio here!](#)



Aluminium profile cover LUMINES TERRA PC 2m, milky 56%

Product code 15903

Brand [LUMINES](#)
Length 2000.0mm

Cover for aluminum profile. The cover is made of high-quality plastic, which ensures even light distribution and reduces glare. Illuminate your world with LED House professionals - [check out our project portfolio here!](#)

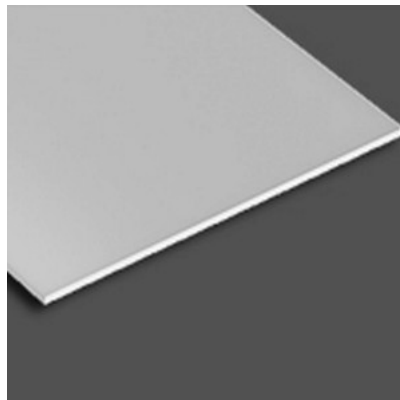


Aluminium profile cover LUMINES TIANO PLEXI, 2m, milky 51%

Product code 16487

Brand [LUMINES](#)
Length 2020.0mm

Cover for aluminum profile. The cover is made of high-quality plastic, which ensures even light distribution and reduces glare. Illuminate your world with LED House professionals - [check out our project portfolio here!](#)

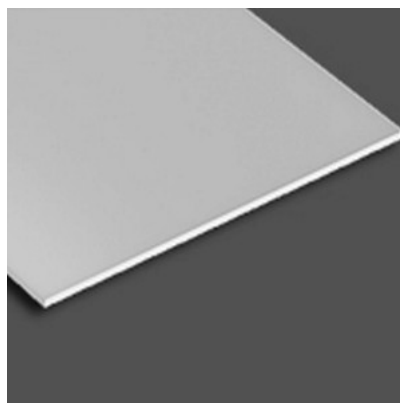


Aluminium profile cover LUMINES TIANO PLEXI, 3m, milky 51%

Product code 17167

Brand [LUMINES](#)
Length 3000.0mm

Cover for aluminum profile. The cover is made of high-quality plastic, which ensures even light distribution and reduces glare. Illuminate your world with LED House professionals - [check out our project portfolio here!](#)



Aluminium profile cover LUMINES Type HIGH (A D), 2m, frosted 87%

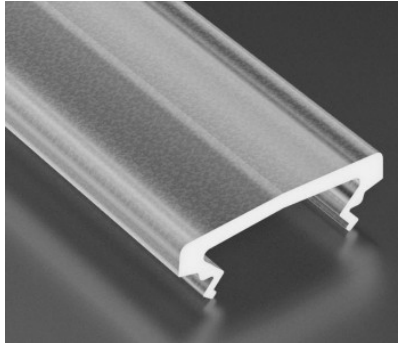
Product code 14823

Brand [LUMINES](#)

Casing material plastic

Polishing matt

Cover for aluminum profile. The cover is made of high-quality plastic, which ensures even light distribution and reduces glare. Illuminate your world with LED House professionals - [check out our project portfolio here!](#)



Aluminium profile cover LUMINES Type HIGH (A D), 2m, milky frosted 83%

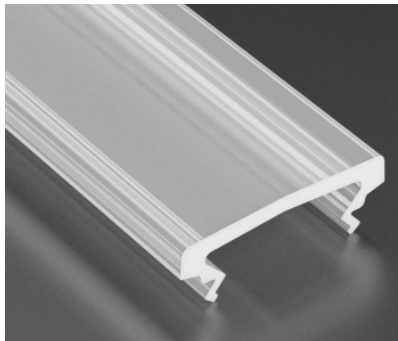
Product code 14824

Brand [LUMINES](#)

Casing material plastic

Polishing matt

Cover for aluminum profile. The cover is made of high-quality plastic, which ensures even light distribution and reduces glare. Illuminate your world with LED House professionals - [check out our project portfolio here!](#)



Aluminium profile cover LUMINES Type PMMA (A B C D G H Y Z) 3m, frosted 78%

Product code 14804

Brand [LUMINES](#)
Length 3000.0mm
Casing material aluminum
Polishing matt
Warranty 2 years

Cover for aluminum profile. The cover is made of high-quality plastic, which ensures even light distribution and reduces glare. Illuminate your world with LED House professionals - [check out our project portfolio here!](#)



Aluminium profile cover LUMINES WIDE PMMA 3m, milky 42%

Product code 15600

Brand [LUMINES](#)
Length 3000.0mm

Cover for aluminum profile. The cover is made of high-quality plastic, which ensures even light distribution and reduces glare. Illuminate your world with LED House professionals - [check out our project portfolio here!](#)



Aluminium profile cover LUMINES WIDE PMMA, 2m, transparent 94%

Product code 14584

Brand [LUMINES](#)
Length 2000.0mm

Cover for aluminum profile. The cover is made of high-quality plastic, which ensures even light distribution and reduces glare. Illuminate your world with LED House professionals - [check out our project portfolio here!](#)



Aluminium profile cover LUZ NEGRA AMSTERDAM, 3m, milky 50%

Product code 14686

Brand [LUZ NEGRA](#)

Length 3000.0mm

Casing material plastic

Polishing matt

Cover for aluminum profile. The cover is made of high-quality plastic, which ensures even light distribution and reduces glare. Illuminate your world with LED House professionals - [check out our project portfolio here!](#)



Aluminium profile cover LUZ NEGRA ARIZONA, 2,5m, milky 50%

Product code 15086

Brand [LUZ NEGRA](#)

Casing material polycarbonate

Cover for aluminum profile. The cover is made of high-quality plastic, which ensures even light distribution and reduces glare. Illuminate your world with LED House professionals - [check out our project portfolio here!](#)



Aluminium profile cover LUZ NEGRA ARLES, rubber, white

Product code 14775

Brand [LUZ NEGRA](#)

Height 8.3mm

Width 22.4mm

Polishing matt

Cover for aluminum profile. The cover is made of high-quality plastic, which ensures even light distribution and reduces glare. Illuminate your world with LED House professionals - [check out our project portfolio here!](#)



Aluminium profile cover LUZ NEGRA BERLIN XL, ROMA XL, 2m , transparent 97%

Product code 13511

Brand [LUZ NEGRA](#)

Length 2000.0mm

Casing material plastic

Polishing matt



Cover for aluminum profile. The cover is made of high-quality plastic, which ensures even light distribution and reduces glare. Illuminate your world with LED House professionals - [check out our project portfolio here!](#)

Aluminium profile cover LUZ NEGRA BERLIN XL, ROMA XL, 2m, frosted 75%

Product code 13510

Brand [LUZ NEGRA](#)

Length 2000.0mm

Casing material plastic

Polishing matt

Cover for aluminum profile. The cover is made of high-quality plastic, which ensures even light distribution and reduces glare. Illuminate your world with LED House professionals - [check out our project portfolio here!](#)

Aluminium profile cover LUZ NEGRA BERLIN XL, ROMA XL, 2m, milky 50%

Product code 13509

Brand [LUZ NEGRA](#)

Casing material plastic

Polishing matt

Cover for aluminum profile. The cover is made of high-quality plastic, which ensures even light distribution and reduces glare. Illuminate your world with LED House professionals - [check out our project portfolio here!](#)



Aluminium profile cover LUZ NEGRA BERLIN XL, ROMA XL, 3m, milky 50%

Product code 15273

Brand [LUZ NEGRA](#)

Length 3000.0mm

Casing material plastic

Polishing matt

Cover for aluminum profile. The cover is made of high-quality plastic, which ensures even light distribution and reduces glare. Illuminate your world with LED House professionals - [check out our project portfolio here!](#)



Aluminium profile cover LUZ NEGRA BERLIN, FRANKFURT, LONDRES, MILANO, PARIS, ROMA, SOFIA, 2m, frosted 75%

Product code 13350

Brand [LUZ NEGRA](#)

Length 2000.0mm

Casing material plastic

Cover for aluminum profile. The cover is made of high-quality plastic, which ensures even light distribution and reduces glare. Illuminate your world with LED House professionals - [check out our project portfolio here!](#)



Aluminium profile cover LUZ NEGRA BERLIN, FRANKFURT, LONDRES, MILANO, PARIS, ROMA, SOFIA, 2m, milky 50%

Product code 13351

Brand [LUZ NEGRA](#)
Length 2000.0mm

Cover for aluminum profile. The cover is made of high-quality plastic, which ensures even light distribution and reduces glare. Illuminate your world with LED House professionals - [check out our project portfolio here!](#)



Aluminium profile cover LUZ NEGRA BERLIN, FRANKFURT, LONDRES, MILANO, PARIS, ROMA, SOFIA, 2m, opaque, grey 0%

Product code 13518

Brand [LUZ NEGRA](#)
Length 2000.0mm

Cover for aluminum profile. The cover is made of high-quality plastic, which ensures even light distribution and reduces glare. Illuminate your world with LED House professionals - [check out our project portfolio here!](#)



Aluminium profile cover LUZ NEGRA BERLIN, FRANKFURT, LONDRES, MILANO, PARIS, ROMA, SOFIA, 2m, transparent 97%

Product code 13349

Brand [LUZ NEGRA](#)
Length 2000.0mm

Cover for aluminum profile. The cover is made of high-quality plastic, which ensures even light distribution and reduces glare. Illuminate your world with LED House professionals - [check out our project portfolio here!](#)

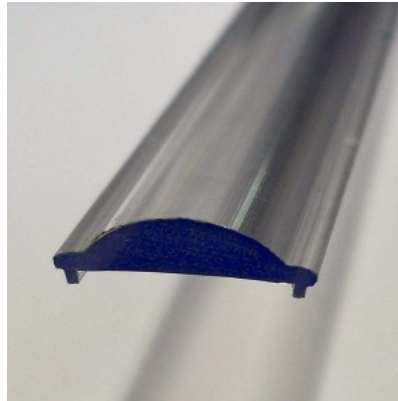


Aluminium profile cover LUZ NEGRA BERLIN, FRANKFURT, LONDRES, MILANO, PARIS, ROMA, SOFIA, 30°/60°, 2m, transparent 97%

Product code 13744

Brand [LUZ NEGRA](#)
Length 2000.0mm

Cover for aluminum profile. The cover is made of high-quality plastic, which ensures even light distribution and reduces glare. Illuminate your world with LED House professionals - [check out our project portfolio here!](#)

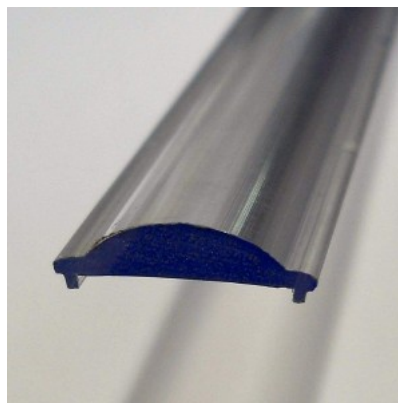


Aluminium profile cover LUZ NEGRA BERLIN, FRANKFURT, LONDRES, MILANO, PARIS, ROMA, SOFIA, 30°/60°, 3m, transparent 97%

Product code 15814

Brand [LUZ NEGRA](#)
Length 3000.0mm

Cover for aluminum profile. The cover is made of high-quality plastic, which ensures even light distribution and reduces glare. Illuminate your world with LED House professionals - [check out our project portfolio here!](#)



Aluminium profile cover LUZ NEGRA BERLIN, FRANKFURT, LONDRES, MILANO, PARIS, ROMA, SOFIA; 3m, milky 50%

Product code 13834

Brand [LUZ NEGRA](#)

Length 3000.0mm

Casing material plastic

Polishing matt

Cover for aluminum profile. The cover is made of high-quality plastic, which ensures even light distribution and reduces glare. Illuminate your world with LED House professionals - [check out our project portfolio here!](#)



Aluminium profile cover LUZ NEGRA BERLIN, ROMA, 3m, milky 55%

Product code 15391

Brand [LUZ NEGRA](#)

Length 3000.0mm

Casing material plastic

Polishing matt

Cover for aluminum profile. The cover is made of high-quality plastic, which ensures even light distribution and reduces glare. Illuminate your world with LED House professionals - [check out our project portfolio here!](#)



Aluminium profile cover LUZ NEGRA BERNA, 2m, frosted 75%

Product code 15145

Brand [LUZ NEGRA](#)

Height 16.0mm

Casing material plastic

Polishing matt

Cover for aluminum profile. The cover is made of high-quality plastic, which ensures even light distribution and reduces glare. Illuminate your world with LED House professionals - [check out our project portfolio here!](#)



Aluminium profile cover LUZ NEGRA BLACK&WHITE EASY-ON 2M, black, 20%

Product code 15987

Brand [LUZ NEGRA](#)

Length 2000.0mm

Casing material plastic

Polishing matt

Cover for aluminum profile. The cover is made of high-quality plastic, which ensures even light distribution and reduces glare. Illuminate your world with LED House professionals - [check out our project portfolio here!](#)



Aluminium profile cover LUZ NEGRA California XL, frosted 75%, 3m

Product code 16122

Brand [LUZ NEGRA](#)
Length 3000.0mm

Cover for aluminum profile. The cover is made of high-quality plastic, which ensures even light distribution and reduces glare. Illuminate your world with LED House professionals - [check out our project portfolio here!](#)



Aluminium profile cover LUZ NEGRA CAMBRIDGE, 2,4m, milky 50%

Product code 13505

Brand [LUZ NEGRA](#)
Length 2400.0mm
Casing material plastic

Cover for aluminum profile. The cover is made of high-quality plastic, which ensures even light distribution and reduces glare. Illuminate your world with LED House professionals - [check out our project portfolio here!](#)

Aluminium profile cover LUZ NEGRA DUBLIN XL 3m, milky 50% IP65

Product code 16045

Brand [LUZ NEGRA](#)
Protection class IP65
Length 3000.0mm
Casing material polycarbonate
Polishing matt
Impact resistance IK10



Cover for aluminum profile. The cover is made of high-quality plastic, which ensures even light distribution and reduces glare. Illuminate your world with LED House professionals - [check out our project portfolio here!](#)

Aluminium profile cover LUZ NEGRA DUBLIN, 2m, milky 50%

Product code 13352

Brand [LUZ NEGRA](#)
Length 2000.0mm
Casing material plastic
Polishing matt



Cover for aluminum profile. The cover is made of high-quality plastic, which ensures even light distribution and reduces glare. Illuminate your world with LED House professionals - [check out our project portfolio here!](#)

Aluminium profile cover LUZ NEGRA HARMONY, 3m, milky 50%

Product code 14690

Brand [LUZ NEGRA](#)
Length 3000.0mm
Casing material plastic
Polishing matt

Cover for aluminum profile. The cover is made of high-quality plastic, which ensures even light distribution and reduces glare. Illuminate your world with LED House professionals - [check out our project portfolio here!](#)



Aluminium profile cover LUZ NEGRA MONTANA, 2m, glossy frosted 75%

Product code 14680

Brand [LUZ NEGRA](#)
Length 2000.0mm

Cover for aluminum profile. The cover is made of high-quality plastic, which ensures even light distribution and reduces glare. Illuminate your world with LED House professionals - [check out our project portfolio here!](#)



Aluminium profile cover LUZ NEGRA MUNICH SLIM, 2m, frosted 75%

Product code 15010

Brand [LUZ NEGRA](#)
Length 2000.0mm

Cover for aluminum profile. The cover is made of high-quality plastic, which ensures even light distribution and reduces glare. Illuminate your world with LED House professionals - [check out our project portfolio here!](#)



Aluminium profile cover LUZ NEGRA MUNICH, 2m, frosted 75%

Product code 15083

Brand [LUZ NEGRA](#)
Length 2000.0mm

Cover for aluminum profile. The cover is made of high-quality plastic, which ensures even light distribution and reduces glare. Illuminate your world with LED House professionals - [check out our project portfolio here!](#)



Aluminium profile cover LUZ NEGRA NIZA DUO, 2,4m, milky 50%

Product code 16549

Brand [LUZ NEGRA](#)
Length 2400.0mm
Casing material polycarbonate

Cover for aluminum profile. The cover is made of high-quality plastic, which ensures even light distribution and reduces glare. Illuminate your world with LED House professionals - [check out our project portfolio here!](#)

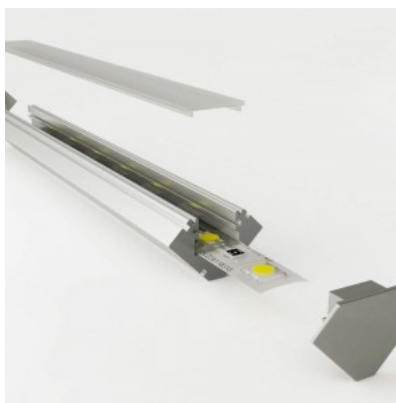


Aluminium profile cover LUZ NEGRA Sofia XL, 6m milky

Product code 15502

Brand [LUZ NEGRA](#)
Height 22.5mm
Width 22.5mm
Length 6000.0mm

Cover for aluminum profile. The cover is made of high-quality plastic, which ensures even light distribution and reduces glare. Illuminate your world with LED House professionals - [check out our project portfolio here!](#)



Aluminium profile cover LUZ NEGRA TORINO, 30°, 2m, transparent 97%

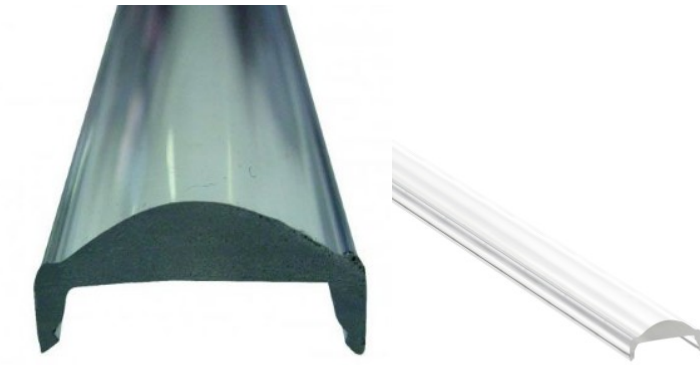
Product code 13353

Brand [LUZ NEGRA](#)

Length 2000.0mm

Casing material plastic

Cover for aluminum profile. The cover is made of high-quality plastic, which ensures even light distribution and reduces glare. Illuminate your world with LED House professionals - [check out our project portfolio here!](#)



Aluminium profile cover LUZ NEGRA TORINO, 60°, 2m, transparent 97%

Product code 13354

Brand [LUZ NEGRA](#)

Length 2000.0mm

Casing material plastic

Polishing semigloss

Cover for aluminum profile. The cover is made of high-quality plastic, which ensures even light distribution and reduces glare. Illuminate your world with LED House professionals - [check out our project portfolio here!](#)



Aluminium profile cover LUZ NEGRA TORINO, 90°, 2m, transparent 97%

Product code 13355

Brand [LUZ NEGRA](#)
Length 2000.0mm
Casing material plastic
Polishing matt

Cover for aluminum profile. The cover is made of high-quality plastic, which ensures even light distribution and reduces glare. Illuminate your world with LED House professionals - [check out our project portfolio here!](#)



Aluminium profile cover LUZ NEGRA Washington 3m, milky 50%

Product code 16726

Brand [LUZ NEGRA](#)
Length 3000.0mm
Casing material plastic
Polishing matt

Cover for aluminum profile. The cover is made of high-quality plastic, which ensures even light distribution and reduces glare. Illuminate your world with LED House professionals - [check out our project portfolio here!](#)



Aluminium profile cover LUZ NEGRA Zagreb, 2m, milky 50% IP60

Product code 16846

Brand [LUZ NEGRA](#)
Protection class IP60
Length 2000.0mm
Casing material plastic
Polishing matt

Cover for aluminum profile. The cover is made of high-quality plastic, which ensures even light distribution and reduces glare. Illuminate your world with LED House professionals - [check out our project portfolio here!](#)



Aluminium profile cover LUZ NEGRA Zagreb, 3m, milky 50% IP60

Product code 16800

Brand [LUZ NEGRA](#)
Protection class IP60
Length 3000.0mm
Casing material plastic
Polishing matt

Cover for aluminum profile. The cover is made of high-quality plastic, which ensures even light distribution and reduces glare. Illuminate your world with LED House professionals - [check out our project portfolio here!](#)



Aluminium profile cover PL, PLA, RPL, RPLA, PL35S, PL35D, SPL series, 2m, transparent 93%

Product code 14194

Length 2000.0mm
Casing material plastic

Cover for aluminum profile. The cover is made of high-quality plastic, which ensures even light distribution and reduces glare. Illuminate your world with LED House professionals - [check out our project portfolio here!](#)

Aluminium profile cover PL, PLA, RPL, RPLA, RPL35 FL, PL35S, PL35D, SPL, SPL FL series, 2m, milky 75%

Product code 13726

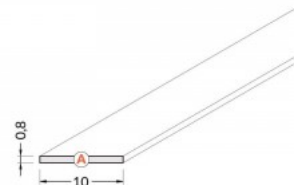
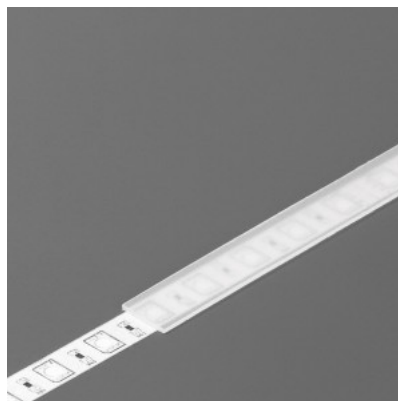
Cover for aluminum profile. The cover is made of high-quality plastic, which ensures even light distribution and reduces glare. Illuminate your world with LED House professionals - [check out our project portfolio here!](#)

Aluminium profile cover TOPMET A, 2m, frosted 90%

Product code 15547

Brand [TOPMET](#)
Height 0.8mm
Width 10.0mm
Length 2000.0mm
Operation temperature -15 ~ 85°C

Cover for aluminum profile. The cover is made of high-quality plastic, which ensures even light distribution and reduces glare. Illuminate your world with LED House professionals - [check out our project portfolio here!](#)



Aluminium profile cover TOPMET A, 3m, frosted 90%

Product code 15760

Brand [TOPMET](#)

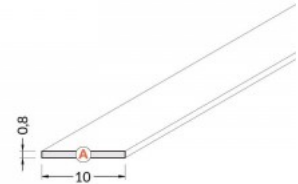
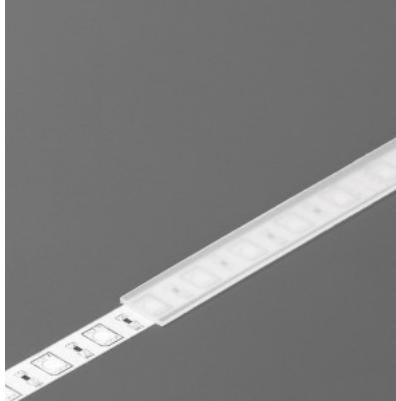
Height 0.8mm

Width 10.0mm

Length 3000.0mm

Operation temperature -15 ~ 85°C

Cover for aluminum profile. The cover is made of high-quality plastic, which ensures even light distribution and reduces glare. Illuminate your world with LED House professionals - [check out our project portfolio here!](#)



Aluminium profile cover TOPMET B 2m milky 60%

Product code 15499

Brand [TOPMET](#)

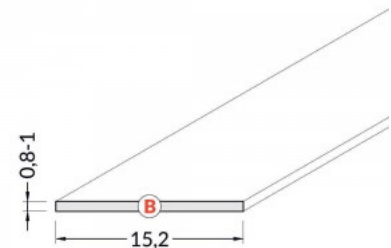
Height 0.8mm

Width 15.2mm

Length 2000.0mm

Operation temperature -15 ~ 85°C

Cover for aluminum profile. The cover is made of high-quality plastic, which ensures even light distribution and reduces glare. Illuminate your world with LED House professionals - [check out our project portfolio here!](#)



Aluminium profile cover TOPMET B, 2m, frosted 90%

Product code 15111

Brand [TOPMET](#)

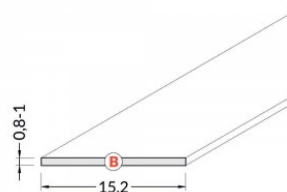
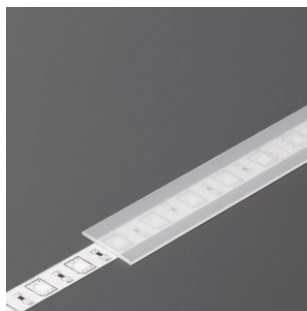
Height 0.8mm

Width 15.2mm

Length 2000.0mm

Operation temperature -15 ~ 85°C

Cover for aluminum profile. The cover is made of high-quality plastic, which ensures even light distribution and reduces glare. Illuminate your world with LED House professionals - [check out our project portfolio here!](#)



Aluminium profile cover TOPMET C lens, 2m, transparent, PMMA, 90%

Product code 15919

Brand [TOPMET](#)

Height 7.2mm

Width 13.1mm

Length 2000.0mm

Operation temperature -50 ~ 100°C

Aluminium profile cover TOPMET C, 2m, black, 40% PMMA

Product code 16666

Brand [TOPMET](#)

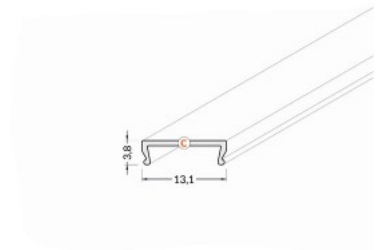
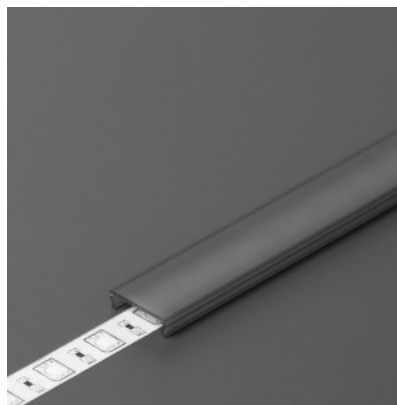
Height 3.8mm

Width 13.1mm

Length 2000.0mm

Operation temperature -20 ~ 70°C

Cover for aluminum profile. The cover is made of high-quality plastic, which ensures even light distribution and reduces glare. Illuminate your world with LED House professionals - [check out our project portfolio here!](#)



Aluminium profile cover TOPMET C, 2m, opal, 70% PMMA

Product code 16040

Brand [TOPMET](#)

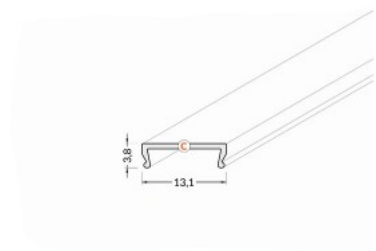
Height 3.8mm

Width 13.1mm

Length 2000.0mm

Operation temperature -20 ~ 70°C

Cover for aluminum profile. The cover is made of high-quality plastic, which ensures even light distribution and reduces glare. Illuminate your world with LED House professionals - [check out our project portfolio here!](#)



Aluminium profile cover TOPMET C, 2m, transparent, PMMA 95%

Product code 15841

Brand [TOPMET](#)

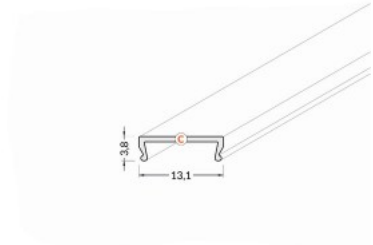
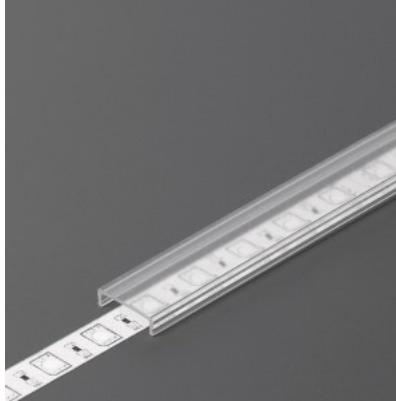
Height 3.8mm

Width 13.1mm

Length 2000.0mm

Operation temperature -25 ~ 120°C

Cover for aluminum profile. The cover is made of high-quality plastic, which ensures even light distribution and reduces glare. Illuminate your world with LED House professionals - [check out our project portfolio here!](#)



Aluminium profile cover TOPMET C10, milky, 75%, 2m

Product code 17089

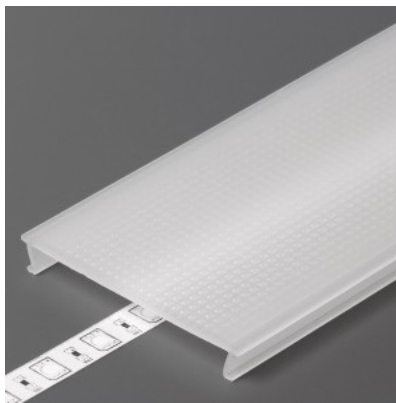
Brand [TOPMET](#)

Height 7.6mm

Width 50.0mm

Length 2000.0mm

Cover for aluminum profile. The cover is made of high-quality plastic, which ensures even light distribution and reduces glare. Illuminate your world with LED House professionals - [check out our project portfolio here!](#)



Aluminium profile cover TOPMET C3, 2m, opal 70%

Product code 16378

Brand [TOPMET](#)

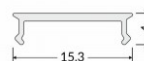
Height 4.0mm

Width 15.3mm

Length 2000.0mm

Operation temperature -40 ~ 90°C

Cover for aluminum profile. The cover is made of high-quality plastic, which ensures even light distribution and reduces glare. Illuminate your world with LED House professionals - [check out our project portfolio here!](#)



Aluminium profile cover TOPMET C4, 3m, opal, 70% PC

Product code 17227

Brand [TOPMET](#)

Height 5.0mm

Width 10.2mm

Length 3000.0mm

Operation temperature -20 ~ 70°C

Cover for aluminum profile. The cover is made of high-quality plastic, which ensures even light distribution and reduces glare. Illuminate your world with LED House professionals - [check out our project portfolio here!](#)



Aluminium profile cover TOPMET C9, black 40%, 2m

Product code 16451

Brand [TOPMET](#)

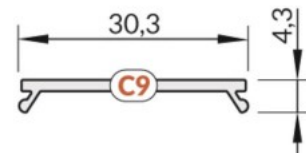
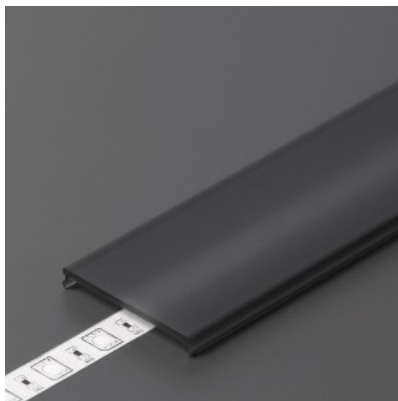
Height 4.3mm

Width 30.3mm

Length 2000.0mm

Operation temperature -40 ~ 90°C

Cover for aluminum profile. The cover is made of high-quality plastic, which ensures even light distribution and reduces glare. Illuminate your world with LED House professionals - [check out our project portfolio here!](#)



Aluminium profile cover TOPMET C9, milky, 70%, 2m

Product code 15990

Brand [TOPMET](#)

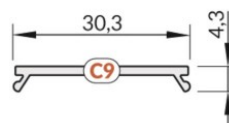
Height 4.3mm

Width 30.3mm

Length 2000.0mm

Operation temperature -40 ~ 90°C

Cover for aluminum profile. The cover is made of high-quality plastic, which ensures even light distribution and reduces glare. Illuminate your world with LED House professionals - [check out our project portfolio here!](#)



Aluminium profile cover TOPMET D 2m milky 70%

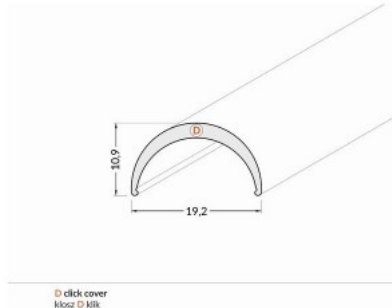
Product code 16243

Brand [TOPMET](#)

Length 2000.0mm

Operation temperature -20 ~ 70°C

Cover for aluminum profile. The cover is made of high-quality plastic, which ensures even light distribution and reduces glare. Illuminate your world with LED House professionals - [check out our project portfolio here!](#)



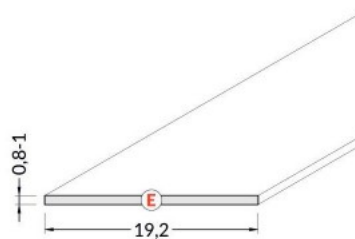
Aluminium profile cover TOPMET E, 2m, frosted 90%

Product code 15400

Brand [TOPMET](#)

Operation temperature -15 ~ 85°C

Cover for aluminum profile. The cover is made of high-quality plastic, which ensures even light distribution and reduces glare. Illuminate your world with LED House professionals - [check out our project portfolio here!](#)



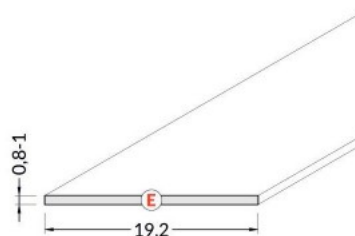
Aluminium profile cover TOPMET E, 2m, milky 70%

Product code 15536

Brand [TOPMET](#)

Operation temperature -15 ~ 85°C

Cover for aluminum profile. The cover is made of high-quality plastic, which ensures even light distribution and reduces glare. Illuminate your world with LED House professionals - [check out our project portfolio here!](#)

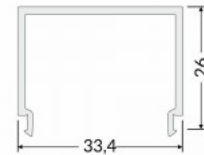
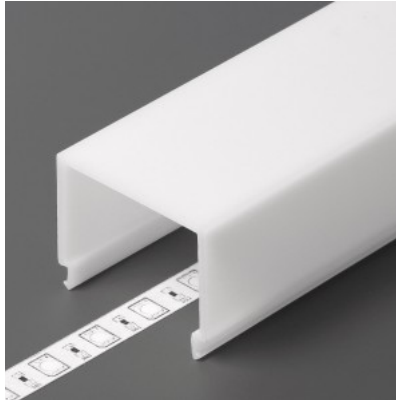


Aluminium profile cover TOPMET E9, milky, 70%, 2m

Product code 16398

Brand [TOPMET](#)
Height 26.0mm
Width 33.4mm
Length 2000.0mm
Casing material plastic
Operation temperature -20 ~ 70°C

Cover for aluminum profile. The cover is made of high-quality plastic, which ensures even light distribution and reduces glare. Illuminate your world with LED House professionals - [check out our project portfolio here!](#)



Aluminium profile cover TOPMET F, 2m, milky 75%

Product code 16127

Brand [TOPMET](#)
Height 4.5mm
Width 17.6mm
Length 2000.0mm
In box 50pcs
Operation temperature -20 ~ 70°C

Cover for aluminum profile. The cover is made of high-quality plastic, which ensures even light distribution and reduces glare. Illuminate your world with LED House professionals - [check out our project portfolio here!](#)



Aluminium profile cover TOPMET F, 3m, milky 70%

Product code 17195

Brand [TOPMET](#)
Length 3000.0mm
Operation temperature -15 ~ 85°C

Cover for aluminum profile. The cover is made of high-quality plastic, which ensures even light distribution and reduces glare. Illuminate your world with LED House professionals - [check out our project portfolio here!](#)



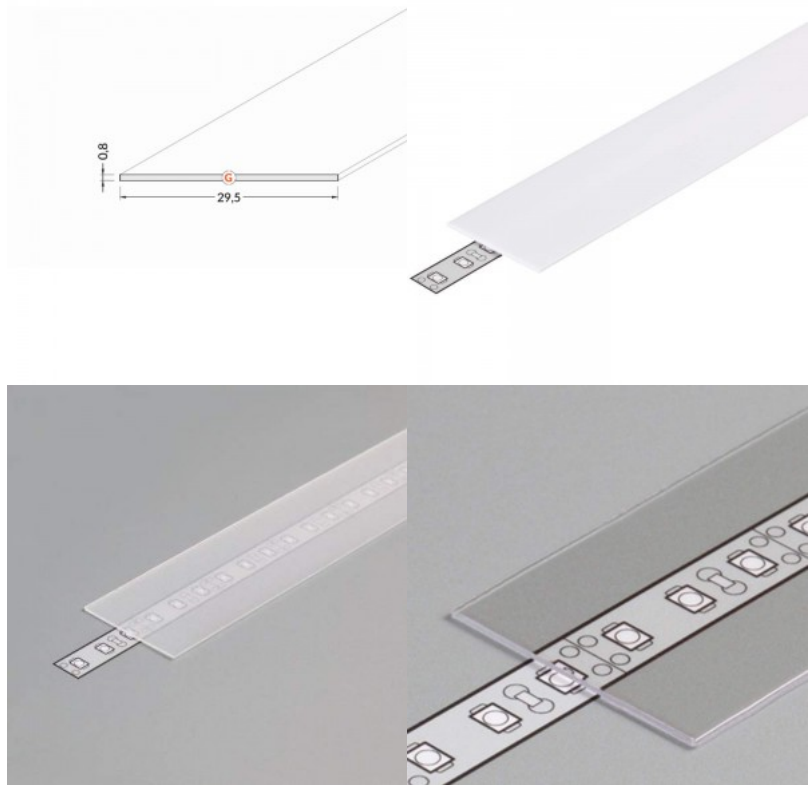
Aluminium profile cover TOPMET G 2m milky 70%

Product code 15506

Brand [TOPMET](#)

Operation temperature -15 ~ 85°C

Cover for aluminum profile. The cover is made of high-quality plastic, which ensures even light distribution and reduces glare. Illuminate your world with LED House professionals - [check out our project portfolio here!](#)



Aluminium profile cover TOPMET K, 2m, opal, 60% PC

Product code 16057

Brand [TOPMET](#)

Length 2000.0mm

In box 50pcs

Operation temperature -50 ~ 100°C

Cover for aluminum profile. The cover is made of high-quality plastic, which ensures even light distribution and reduces glare. Illuminate your world with LED House professionals - [check out our project portfolio here!](#)

Aluminium profile cover TOPMET STEP10 transparent 2m

Product code 16039

Brand [TOPMET](#)

Length 2000.0mm

Cover for aluminum profile. The cover is made of high-quality plastic, which ensures even light distribution and reduces glare. Illuminate your world with LED House professionals - [check out our project portfolio here!](#)

