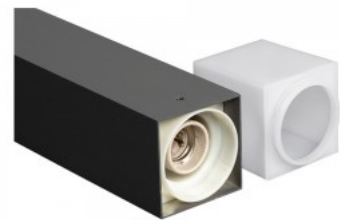


Bollard light LFGE27GR black 230V E27 IP65

Product code 16455

Supply voltage 230V
Maximum output 16W/1m
Socket E27
Protection class IP65
Height 600.0mm
Width 76.0mm
Length 76.0mm
In package 1pc
Casing colour black
Casing material aluminum
Polishing matt
Work environment outdoor use
Warranty 2 years



Bollard light for outdoor use. Well-suited for illuminating driveways and walkways. Protection class IP65 means the light is protected against fine dust and water jets and can be used outdoors. The light has an E27 socket. Illuminate your world with LED House professionals - [check out our project portfolio here!](#)

Bollard light PROLUMEN ML08 black 230V 8W 600lm 120° IP65 930

Product code 15342

Brand [PROLUMEN](#)

Supply voltage 230V

Power factor 0.90

Output 8W

Luminous flux 600lumens

Luminaire's efficiency lm79 75W

Correlated colour temperature warm white 3000K

Lens angle 120

Cri 90

Sdcm - macadam ellipses 6

Protection class IP65

Lifespan 50000h

Height 700.0mm

Width 140.0mm

Length 280.0mm

In package 1pc

In box 6pcs

Casing colour black

Casing material aluminum + plastic

Polishing matt

Impact resistance IK10

Work environment outdoor use

Operation temperature -20°C ~45°C

Certificates CE,RoHS

Warranty 5 years



A bollard light suitable for the garden with a bidirectional light beam. The light has an aluminum housing, which ensures efficient heat dissipation, and fire-resistant plastic, which distributes the light evenly. Illuminate your world with LED House professionals - [check out our project portfolio here!](#)

Bollard light PROLUMEN NL08 black 230V 10W 530lm 50° IP65 930

Product code 17382

Brand [PROLUMEN](#)
Supply voltage 230V
Power factor 0.90
Output 10W
Luminous flux 530lumens
Luminaire's efficiency lm79 53W
Correlated colour temperature warm white 3000K
Lens angle 50
Cri 90
Sdcm - macadam ellipses 6
Protection class IP65
Lifespan 50000h
Height 1000.0mm
Width 121.0mm
Length 249.0mm
Weight 5020g
In package 1pc
In box 24pcs
Casing colour black
Casing material aluminum + plastic
Work environment outdoor use
Operation temperature -20 ~ 45°C
Certificates CE
Warranty 5 years



LED bollard light with optical structure. The luminaire adds warm white (3000K) light to the garden, and high CRI ensures the naturalness of the colours in the illuminated areas. With proper use, the luminaire is energy-efficient, environmentally friendly, and has a very long lifespan (50,000 hours). Illuminate your world with LED House professionals - [check out our project portfolio here!](#)

Bollard light PROLUMEN NL90 black 230V 8W 600lm 360° IP65 TRIAC 930

Product code 17377 TRIAC dimmable

Brand [PROLUMEN](#)
Supply voltage 230V
Power factor 0.90
Dimmable TRIAC
Output 8W
Luminous flux 600lumens
Luminaire's efficiency lm79 75W
Correlated colour temperature warm white 3000K
Lens angle 360
Cri 90
Sdcm - macadam ellipses 6
Protection class IP65
Lifespan 50000h
Height 1000.0mm
Width 0.0mm
Diameter 100.0mm
Weight 2300g
In package 1pc
In box 6pcs
Casing colour black
Casing material aluminum + plastic
Impact resistance IK08
Work environment outdoor use
Operation temperature -20 ~ 45°C
Warranty 5 years



Stylish bollard light, perfect addition to your driveway and garden! IP65 protection class means that the luminaire is protected against dust ingress and water jets and can be used outdoors. All NL90 models feature high-quality LED chips (CRI90), ensuring that the luminaire's light beam maintains color accuracy in the room. With proper use, the luminaire is energy-efficient, environmentally friendly, and has a very long lifespan (50,000 hours). Illuminate your world with LED House professionals - [check out our project portfolio here!](#)

Bollard light Quazar 12 gray 230V GU10 IP44

Product code 15212

Supply voltage 230V
Socket GU10
Protection class IP44
Height 1000.0mm
Width 125.0mm
Casing colour gray
Casing material aluminum + glass
Polishing matt
Work environment outdoor use
Warranty 2 years



Bollard light for outdoor use. Well-suited for illuminating driveways and walkways. Protection class IP65 means the light is protected against fine dust and water jets and can be used outdoors. The light has an GU10 socket. Illuminate your world with LED House professionals - [check out our project portfolio here!](#)